



Sinclair Gardens, Brook Green, W14

£875,000 Leasehold

A fabulous two bedroom flat with private garden on the lower ground floor of a mid-terrace Victorian house.

Reception Room | Kitchen | 2 Bedrooms | Bathroom | Study | Garden | 1077 Sq Ft / 100 Sq M | Council Tax Band E | EPC Rating Band C

Winkworth

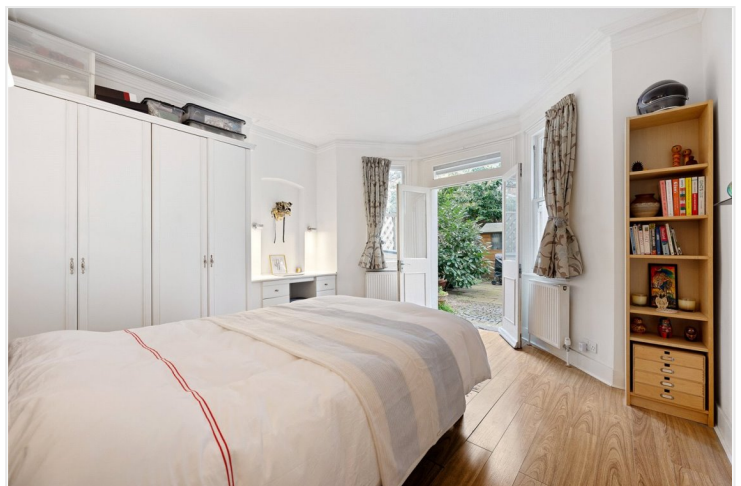


LOCATION

Sinclair Gardens is ideal for the various shops, pubs and restaurants of not only Brook Green, but also Shepherd's Bush and Hammersmith. Westfield London is only moments away, as is Shepherd's Bush station, where both Central line and London Overground services are on offer, as well as numerous bus routes. Hammersmith station, which serves further four Underground lines, is also within easy reach.

DESCRIPTION

Offered in extremely good order throughout, the property benefits from accommodation which comprises entrance hall, kitchen, cloakroom, reception room with dining area, family bathroom and two bedrooms. The flat further benefits from a good size private rear garden and a separate study, accessed at the front of the property.

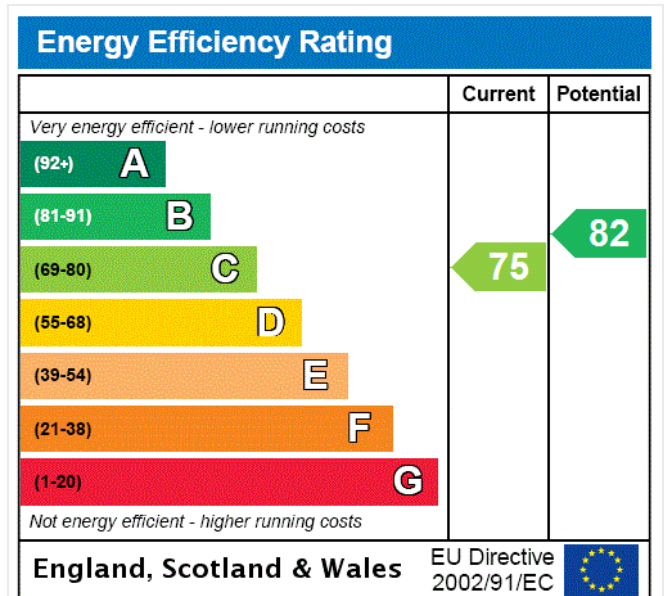


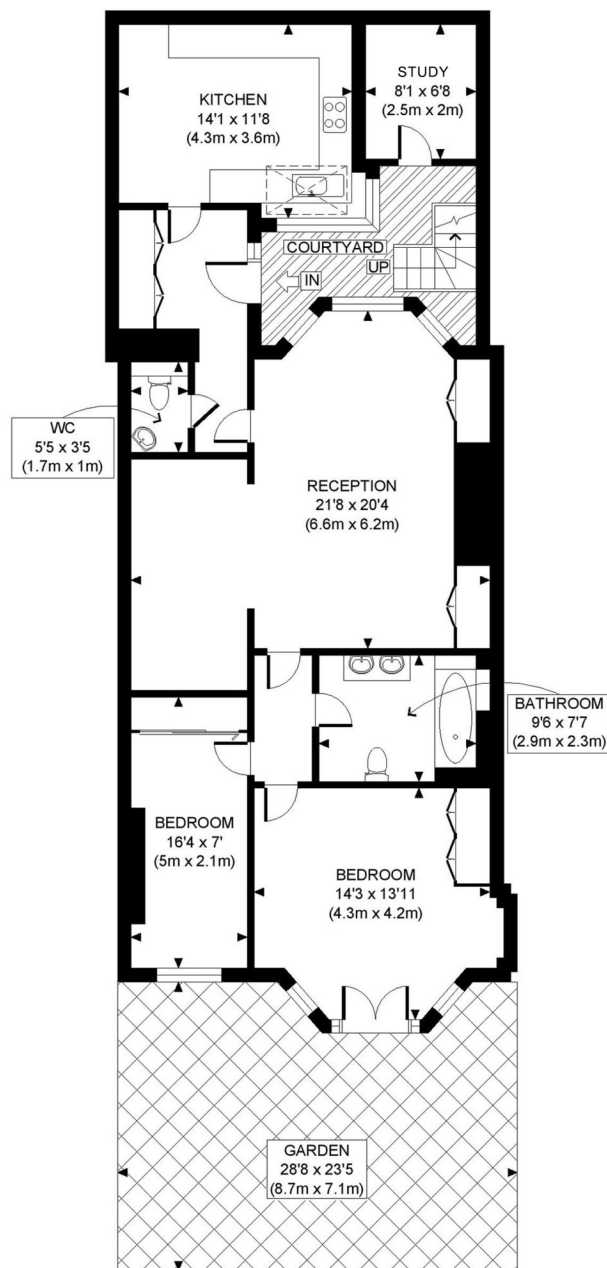


LOCAL AUTHORITY
Hammersmith & Fulham

TENURE
Leasehold.

PRICE: £875,000 Leasehold





LOWER GROUND FLOOR
GROSS INTERNAL
FLOOR AREA 1077 SQ FT

APPROX. GROSS INTERNAL FLOOR AREA: 1077 SQ FT/ 100 SQM

PROPERTY PHOTO PLANS.CO.UK
ONE STOP SHOP FOR PROPERTY MARKETING

This plan is for illustrative purposes only and should be used as such by any prospective client. Whilst every attempt has been made to ensure the accuracy of the Floor Plan contained here, measurements of the doors, windows, rooms and any other items are approximate and no responsibility is taken for any errors, omissions, or misstatement. The services, systems and appliances shown have not been tested and no guarantee as to the operability or efficiency can be given.

The displayed square footage is taken from the floor plans with measurements created using the Royal Institute of Chartered Surveyors' Code of Practice for Measuring. These measurements are approximate and included for illustrative purposes only. Winkworth does not make any representation as to the accuracy of these measurements and you should seek to verify them for yourself. Winkworth accept no liability for any loss you may suffer if you rely on these measurements.

Hammersmith | 0207 371 4466 | hammersmith@winkworth.co.uk



for every step...

Under the Property Misdescriptions Act 1991, these Particulars are a guide and act as information only. All details are given in good faith and are believed to be correct at time of printing. Winkworth give no representation as to their accuracy and potential purchasers or tenants must satisfy themselves by inspection or otherwise as to their correctness. No employee of Winkworth has authority to make or give any representation or warranty in relation to this property.