



**GLOUCESTER TERRACE, BAYSWATER, W2  
OFFERS OVER £415,000 LEASEHOLD ABOUT 83 YEARS REMAINING**

LOCATED IN W2 - MOMENTS FROM HYDE PARK, SET IN AN ATTRACTIVE STUCCO FRONTED, GRADE II PERIOD CONVERSION; A WONDERFUL OPPORTUNITY TO MODERNISE A WELL-PROPORTIONED ONE BEDROOM LOWER GROUND FLOOR APARTMENT, FEATURING THE MAJOR PORTION OF A SOUTH EAST FACING PATIO.

Paddington & Bayswater | 020 7467 5770 | paddington@winkworth.co.uk

**Winkworth**

for every step...

[winkworth.co.uk](http://winkworth.co.uk)



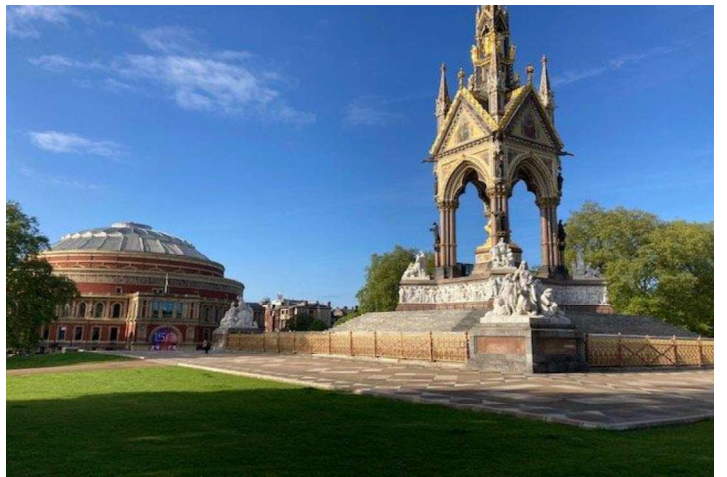
## DESCRIPTION:

Gloucester Terrace, with its white stucco period terraces, is a sought after central London location, in the vicinity of Paddington and Bayswater. Located in the City of Westminster - W2, it runs northwards from Lancaster Terrace and Hyde Park, before curving round to meet Porchester Square. The property is well placed for transport links and amenities, with close proximity to Lancaster Gate St. (Central Line) and Paddington St. (Elizabeth, Circle, District, Bakerloo and Hammersmith and City, in addition to National Rail services and Heathrow Express).



**Winkworth**

for every step...

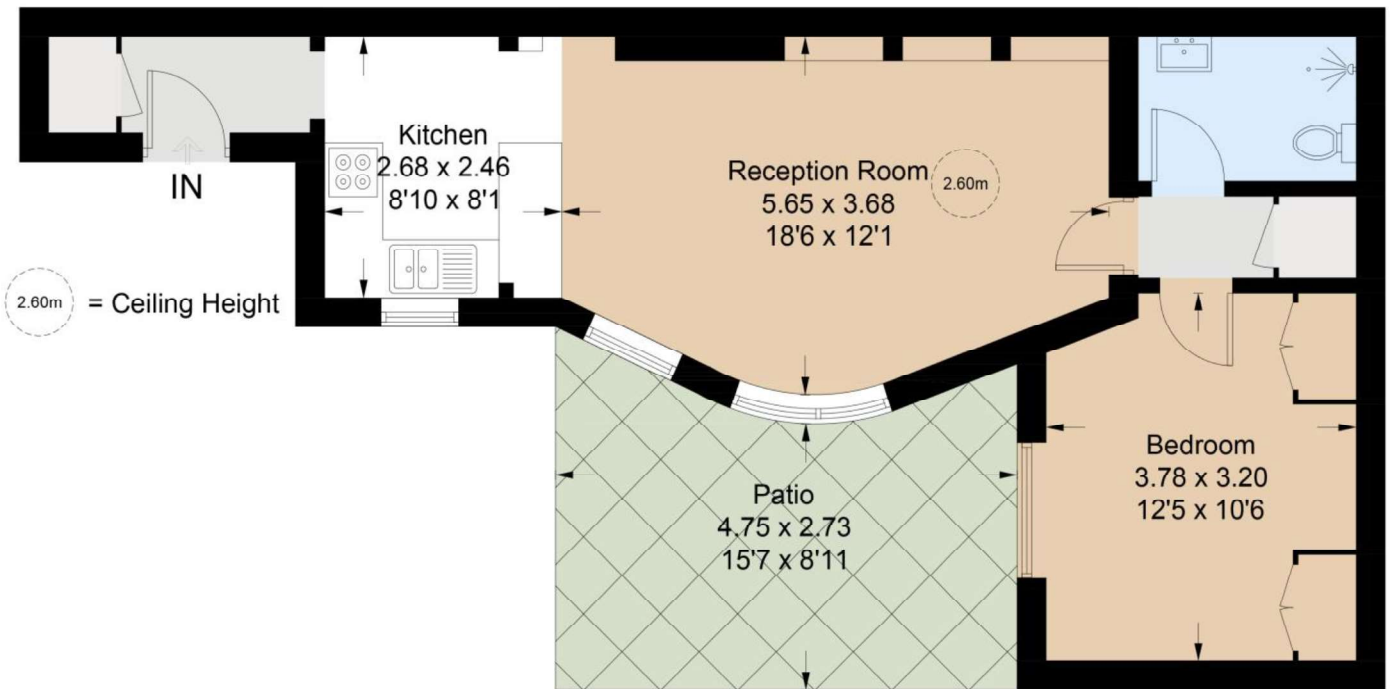


**Winkworth**

for every step...

# Gloucester Terrace

Approximate Gross Internal Area = 47.1 sq m / 507 sq ft



## Lower Ground Floor

Illustration for identification purposes only, measurements are approximate, not to scale. floorplansUsketch.com © (ID1065943)

This floorplan is for illustration purposes only and is not to scale. The position and size of doors, windows, appliances and other features are approximate.

**Tenure:** Leasehold  
**Term:** Expires - 25/03/2107  
**Service Charge:** About £2,540 per annum  
**Ground Rent:** About £ 50 Annually (subject to increase)  
**Council Tax Band:** City of Westminster E

Where no figures are shown, we have been unable to ascertain the information. All figures that are shown were correct at the time of printing.

Paddington | 020 7467 5770 | paddington@winkworth.co.uk

**Winkworth**

for every step...

[winkworth.co.uk](http://winkworth.co.uk)

Winkworth wishes to inform prospective buyers and tenants that these particulars are a guide and act as information only. All our details are given in good faith and believed to be correct at the time of printing but they don't form part of an offer or contract. No Winkworth employee has authority to make or give any representation or warranty in relation to this property. All fixtures and fittings, whether fitted or not are deemed removable by the vendor unless stated otherwise and room sizes are measured between internal wall surfaces, including furnishings.