



ESSEX HOUSE, DOUGLAS CLOSE, STANMORE, MIDDLESEX, HA7
£430,000 LEASEHOLD APPROX 87 YEARS REMAINING

TWO BEDROOM FIRST FLOOR APARTMENT

- GROUND RENT & SERVICE CHARGE APPROX £220 PCM

Kingsbury | 020 8204 0000 | kingsbury@winkworth.co.uk

Winkworth

for every step...

winkworth.co.uk



This first-floor apartment offers a blank canvas with a generous layout designed for modern open plan living. The heart of the home is a large lounge seamlessly integrated with a sleek, contemporary kitchen. The master bedroom is complete with a private en-suite bathroom, ensuring comfort and convenience. The versatile second bedroom, currently styled as a chic office space, provides an excellent environment for those who work from home or as a child's bedroom. Step outside to your own private balcony, offering a peaceful space to unwind. With designated parking, you'll never have to worry about finding a spot. Maintained communal gardens add to the living environment, enhancing the community feel.

Situated close to Stanmore's reputable schools, diverse shops, and excellent transport links, this residence offers more than just a place to live—it promises a lifestyle of convenience. Ideal for professionals, small families, buy to let investors or first-time buyers seeking a home with excellent amenities and a great location.



Winkworth

for every step...



Winkworth
for every step...



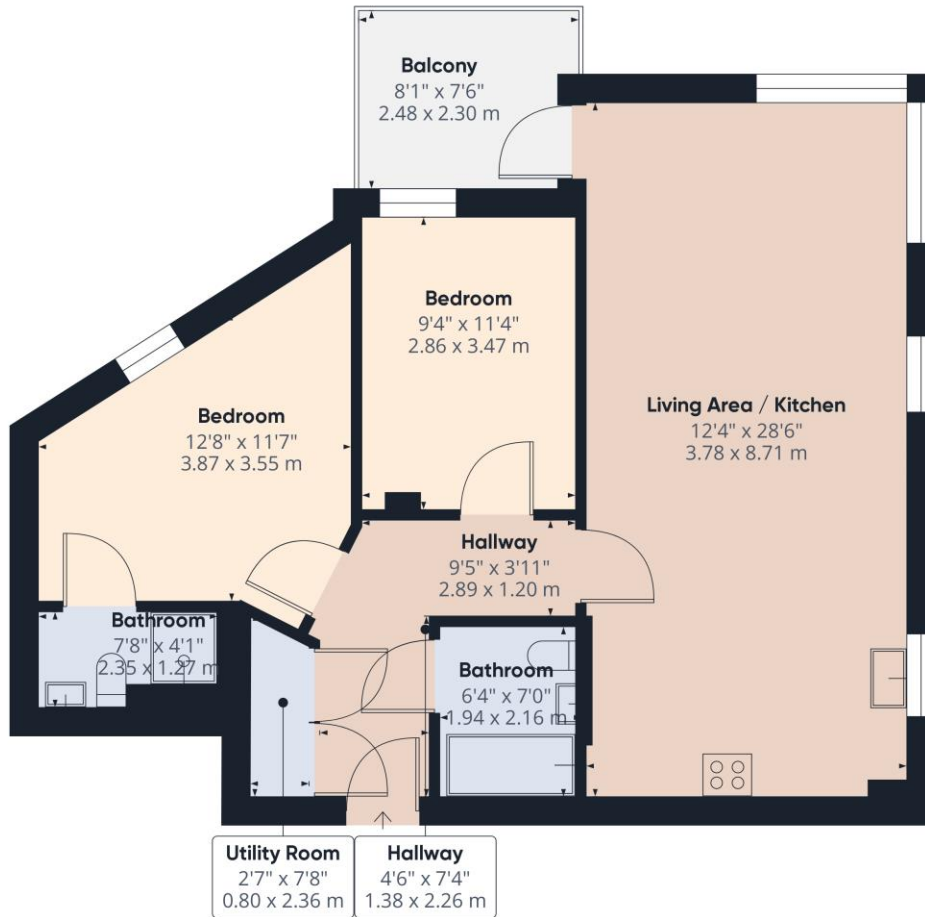
Winkworth
for every step...



Winkworth
for every step...

Winkworth

for every step...



Approximate total area⁽¹⁾
 785.12 ft²
 72.94 m²

(1) Excluding balconies and terraces

While every attempt has been made to ensure accuracy, all measurements are approximate, not to scale. This floor plan is for illustrative purposes only.

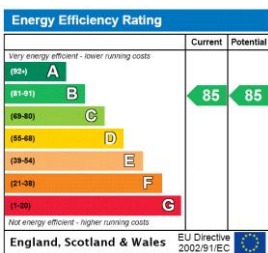
GIRAFFE360

This floorplan is for illustration purposes only and is not to scale. The position and size of doors, windows, appliances and other features are approximate.

Tenure: Leasehold

Council Tax Band: D

Where no figures are shown, we have been unable to ascertain the information. All figures that are shown were correct at the time of printing.



Kingsbury | 020 8204 0000 | kingsbury@winkworth.co.uk



for every step...

winkworth.co.uk

Winkworth wishes to inform prospective buyers and tenants that these particulars are a guide and act as information only. All our details are given in good faith and believed to be correct at the time of printing but they don't form part of an offer or contract. No Winkworth employee has authority to make or give any representation or warranty in relation to this property. All fixtures and fittings, whether fitted or not are deemed removable by the vendor unless stated otherwise and room sizes are measured between internal wall surfaces, including furnishings.