



17 Barnes Close, West Wellow SO51 6ET

Winkworth



LOVELY FAMILY HOME

17 Barnes Close is a beautifully presented detached family home, located in the highly desirable village of West Wellow. Positioned on the south-west fringes of Romsey and within easy reach of the A36 and M27, with the New Forest also only minutes' drive away. The market town of Romsey and the cities of Salisbury, Winchester and Southampton provide further facilities along with a wealth of cultural and leisure activities. The local amenities in Wellow include village stores, butcher, filling station and public houses along with an excellent primary school.

The property has been well maintained and updated by the current owners to provide outstanding living accommodation. The covered porch leads to the entrance hallway which provides access to all principal ground floor rooms. The well-proportioned sitting room overlooking the front elevation is a lovely light and airy space. The superb open plan kitchen/dining room is the perfect social area for families, featuring a wide range of eye and base level units along with French Doors opening onto the rear garden. The property also benefits from a home office/study, ideal for those working from home. Completing downstairs is a cloakroom. To the first floor are three good size bedrooms along with a family bathroom.

The private rear garden is fully enclosed, mainly laid to lawn and bordered by mature shrubs. The large patio area close to the house is ideal for "al fresco" dining. To the front the property is approached via a driveway offering off road parking for several vehicles and access to the single garage, along with an attractive front lawned area.



Winkworth

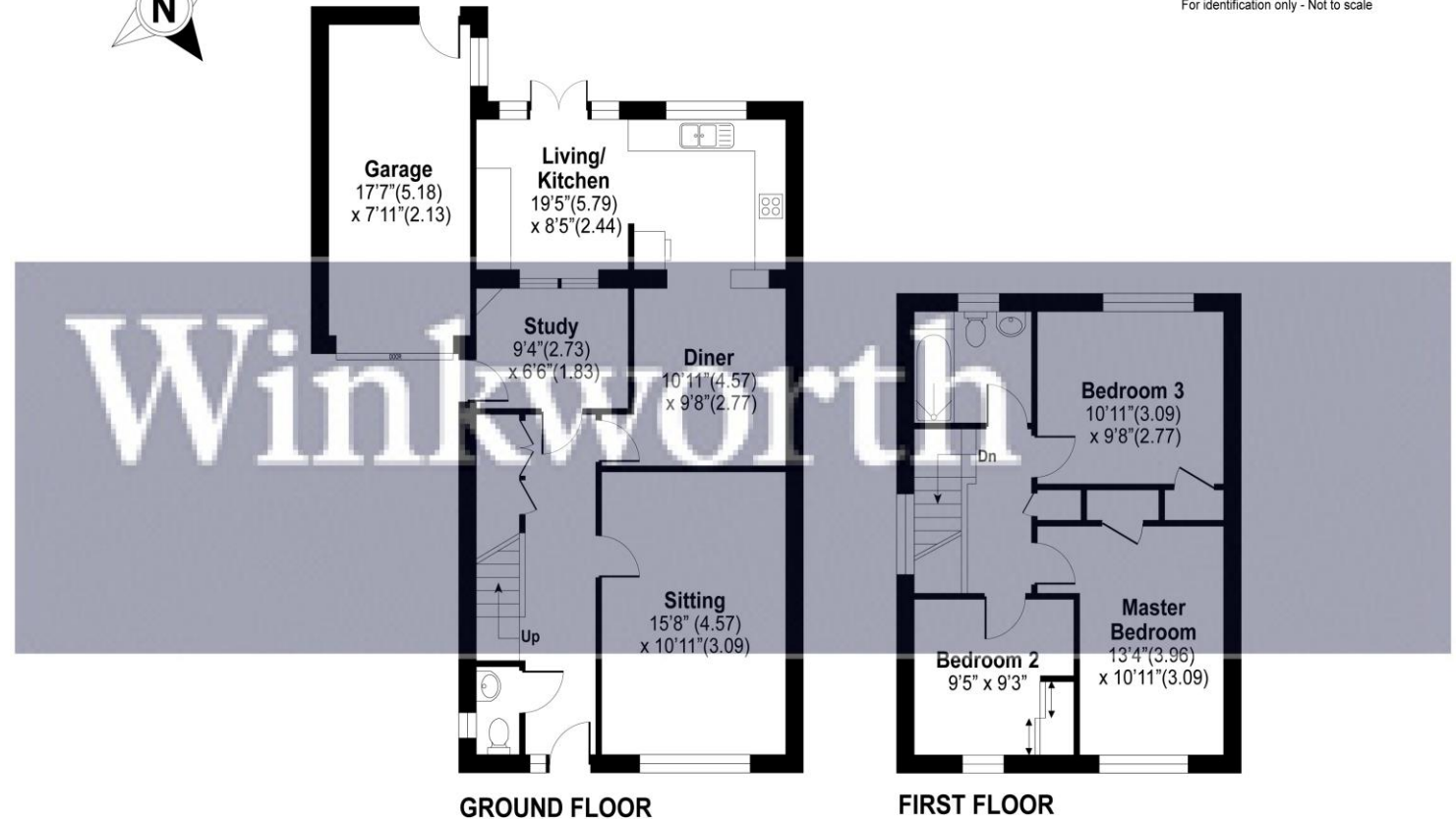
Address: 17 Barnes Close, West Wellow SO51 6ET

**Council Tax – E
FREEHOLD**



BARNES CLOSE, WEST WELLOW, ROMSEY

Approximate Area = 1323 sq ft / 123 sq m
For identification only - Not to scale



winkworth.co.uk/romsey

Winkworth Romsey

18 Market Place, Romsey, Hampshire, SO51 8NA
01794 511911 | romsey@winkworth.co.uk

winkworth.co.uk/romsey

Winkworth Winchester

2 Black Swan Buildings, Southgate Street,
Winchester, Hampshire, SO23 9DT
01962 866777 | winchester@winkworth.co.uk

Winkworth Mayfair & Country House Department

11 Berkeley Street, Mayfair, London, W1J 8DS
020 7871 0589 | countryhouse@winkworth.co.uk

Winkworth

See things differently