



Wells Court, Basingstoke RG22 6BU

A NEW COLLECTION OF 2 AND 3 BEDROOM HOMES FROM

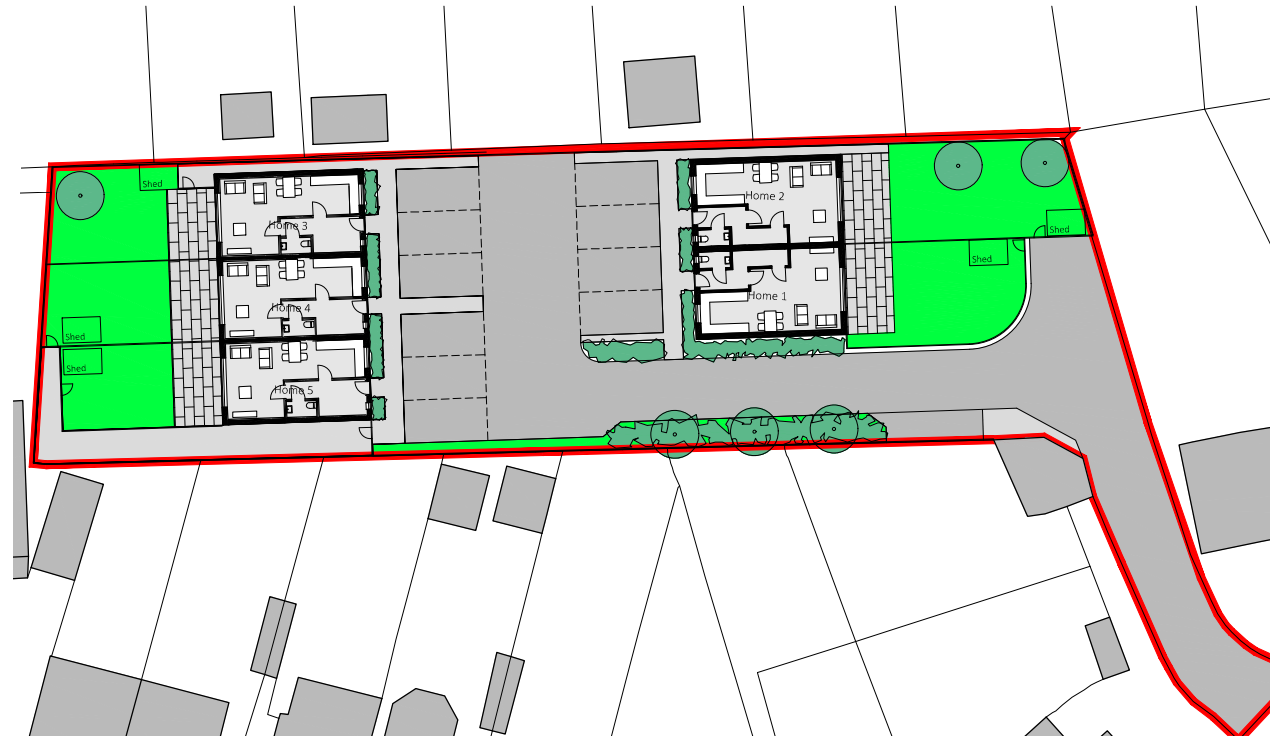
TURBINE
— DEVELOPMENTS —

Welcome to Wells Court

Just a 5-minute drive from Basingstoke town centre, Wells Court is a small development of five carefully-designed, energy-efficient homes. With shaker-style kitchens, luxurious bathrooms and beautifully landscaped gardens, these contemporary properties offer an attractive lifestyle suitable for couples or small families.

All five homes are expected to be 'A' rated for energy efficiency, which means you'll save money on energy bills while being kind to the planet. Energy saving Air Source Heat Pumps are fitted with underfloor heating throughout the ground floor and radiators on the first. The interior spaces are stylish and airy, the gardens are lawned and paved along with planting features to include lush green hedging, cherry trees and field maples.

Set in an attractive residential area close to shops, restaurants and schools, Wells Court is conveniently situated with everything you need on your doorstep.



WELLS COURT

BASINGSTOKE RG22 6DU



3-Bedroom Homes

Perfect for family life, our semi-detached properties offer spacious, flexible accommodation with integrated appliances and high quality bathroom fittings. Downstairs, the attractive entrance hall leads to a double aspect, open-plan living space with a fully-fitted kitchen, dining zone and sitting room.

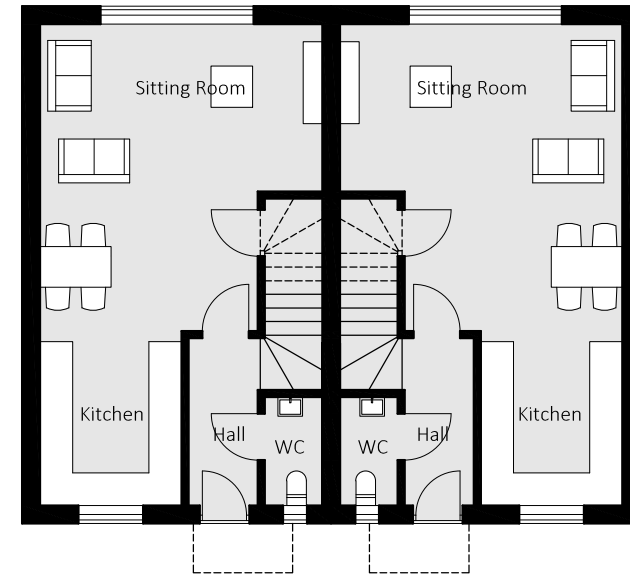
On the first floor, you'll find the generous master bedroom with en suite bathroom, as well as two additional bedrooms and a large family bathroom. The east-facing rear garden features a lawned area, block paving and a shed. There's plenty of parking available, with two designated parking spaces per property.

Homes 1 & 2

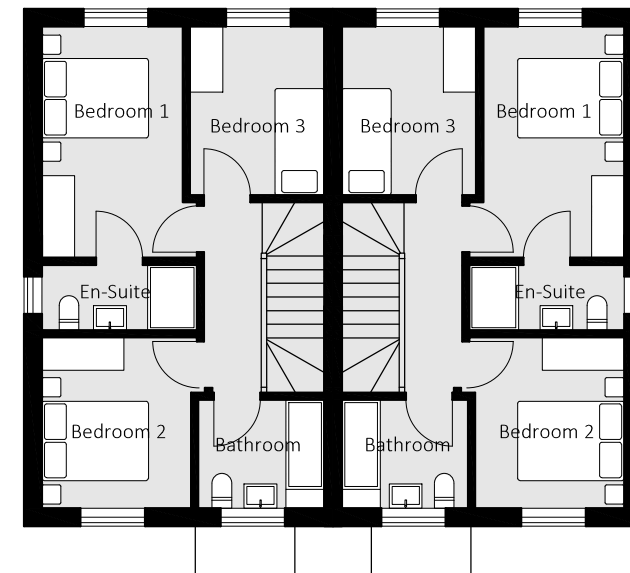
Room	Metres	Feet
Bedroom 1	4.3 x 2.6	14'1" x 8'5"
Bedroom 2	3.0 x 2.6	9'8" x 8'5"
Bedroom 3	3.2 x 2.4	10'4" x 7'9"
Kitchen	2.6 x 3.1	8'6" x 10'2"
Living Room	5.6 x 5.2	18'4" x 17'0"

Measurements shown above are scaled from drawings not actual at this time due to the stage of building construction

Ground Floor



First Floor



2-Bedroom Homes

The terraced properties at Wells Court offer spacious interiors with top-of-the-range, integrated appliances and high quality bathroom fittings. On the ground floor, the light-filled hallway leads you into the L-shaped, open-plan living space featuring a fully-fitted kitchen, dining zone and sitting room.

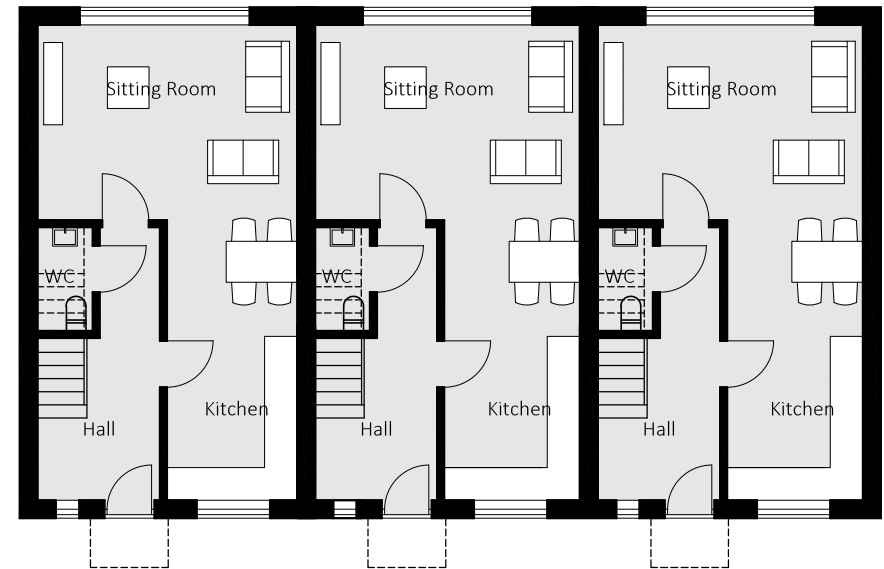
Upstairs, there are two, good-sized bedrooms, both with built-in wardrobes and an en suite bathroom. To the rear, there is a private, west-facing garden complete with lawned area, block paving and shed. Ample parking is available, with each home having two designated parking spaces.

Homes 3, 4 & 5

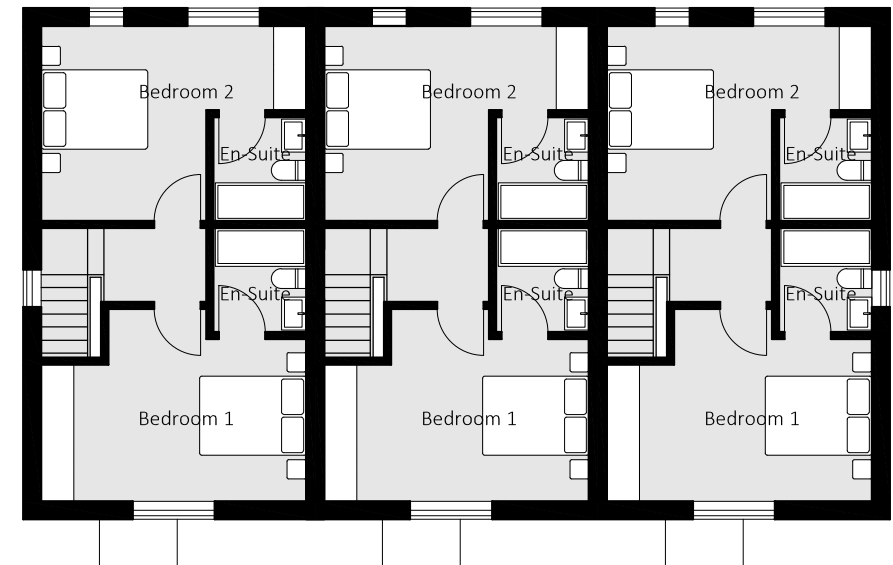
Room	Metres	Feet
Bedroom 1	4.8 x 3.5	15'7" x 11'5"
Bedroom 2	4.8 x 3.4	15'7" x 11'1"
Kitchen & Dining	5.0 x 2.5	16'4" x 8'2"
Sitting Room	4.8 x 3.4	15'7" x 11'1"

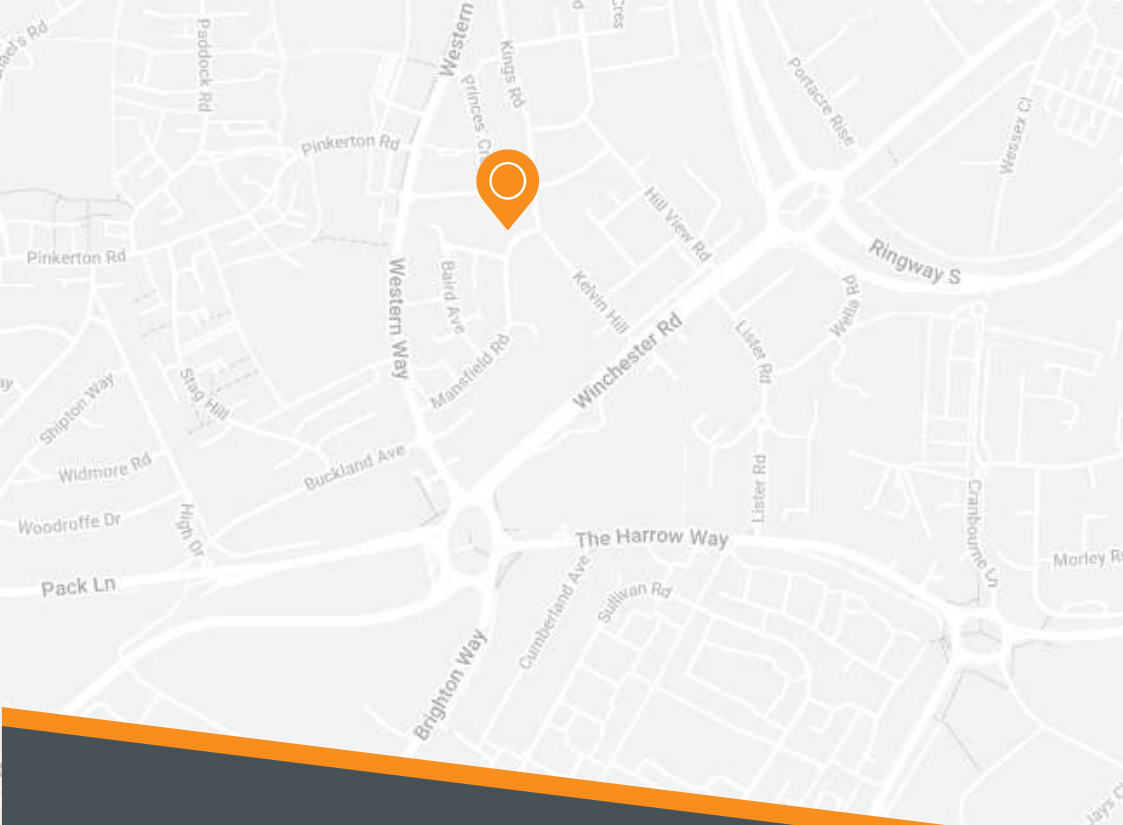
Measurements shown above are scaled from drawings not actual at this time due to the stage of building construction

Ground Floor



First Floor





Travel Times from Well Court

- Basingstoke Town Centre 5 mins
- Sainsbury's Kempshott 10 mins
- M3 Junction 6 8 mins
- London Waterloo 47 mins from Basingstoke Station
- Heathrow Airport 40 mins

Some photography used in this brochure are intended to reasonably convey the lifestyle and do not directly represent the property. The developer reserves the right to alter specification during the build process.

TURBINE
— DEVELOPMENTS —

Winkworth

BUILD-ZONE
INSURANCE

10 year structural warranty