



MARION COURT, LONDON, SW17
OIEO £415,000 SHARE OF FREEHOLD

A TWO DOUBLE BEDROOM 1930's PURPOSE-BUILT FLAT.

Tooting | 020 8767 5221 | tooting@winkworth.co.uk

Winkworth

for every step...

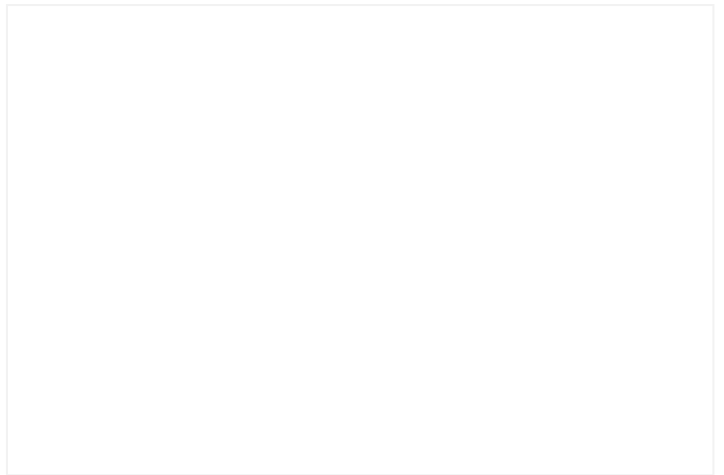
winkworth.co.uk



DESCRIPTION:

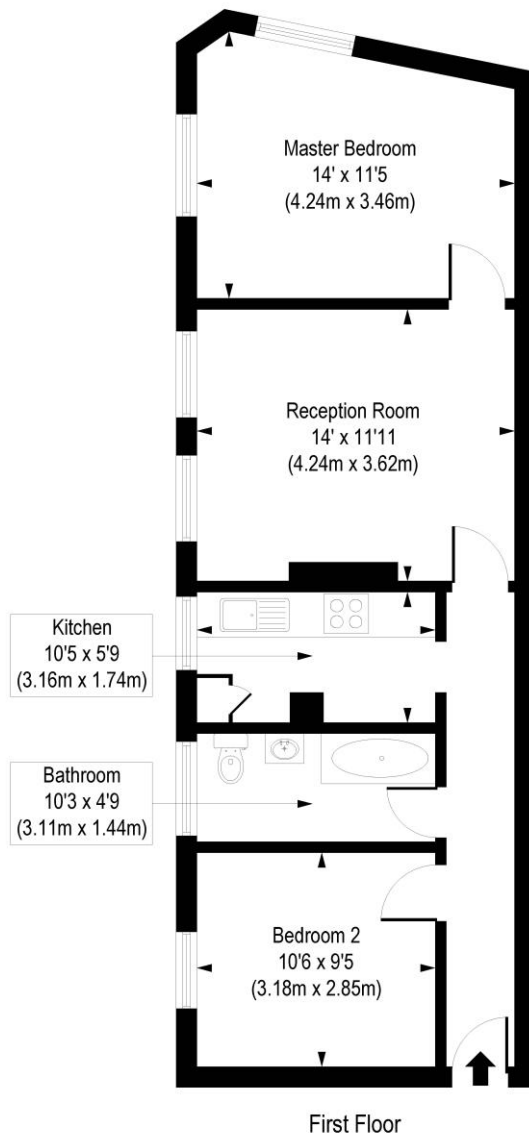
A well-presented two-bedroom flat in a 1930s purpose-built block. The property offers well-proportioned accommodation throughout, including two double bedrooms, a spacious family bathroom, a galley-style kitchen, and a generously sized living room. The building features a lift servicing all floors and is conveniently located near Tooting Broadway station.

Marion Court is close to transport links, including Tooting Broadway (Northern Line) approximately 0.6 miles away, and bus routes on Tooting High Street. Nearby, you'll find Tooting Broadway Market and a variety of national and independent restaurants and amenities.



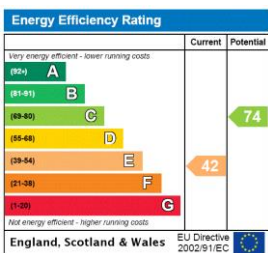
Marion Court, SW17

Approx. Gross Internal Floor Area 614 sq. ft / 57.02 sq. m



COMPLIANT WITH RICS CODE OF MEASURING PRACTICE. Floorplan is for illustrative purposes only and is not to scale. Every attempt has been made to ensure the accuracy of the floorplan shown, however all measurements, fixtures, fittings and data shown are an approximate interpretation for illustrative purposes only. Liability for errors, omissions or mis-statement through negligence or otherwise is hereby excluded.

This floorplan is for illustration purposes only and is not to scale. The position and size of doors, windows, appliances and other features are approximate.



Tooting | 020 8767 5221 | tooting@winkworth.co.uk

for every step...

winkworth.co.uk

Winkworth wishes to inform prospective buyers and tenants that these particulars are a guide and act as information only. All our details are given in good faith and believed to be correct at the time of printing but they don't form part of an offer or contract. No Winkworth employee has authority to make or give any representation or warranty in relation to this property. All fixtures and fittings, whether fitted or not are deemed removable by the vendor unless stated otherwise and room sizes are measured between internal wall surfaces, including furnishings.