



**WAVERTREE COURT, LONDON, SW2**  
**£1,850 PER MONTH PART FURNISHED**

## **AN IMMACULATE ART DECO ONE BEDROOM APARTMENT ON STREATHAM HILL**

**Streatham | 020 8769 6699 | [streatham@winkworth.co.uk](mailto:streatham@winkworth.co.uk)**

Tenant Fees Apply: Details of fees for tenant referencing, tenancy agreement admin fees and renewal fees are available on the Winkworth website and the link can be found with the displayed rent for the property. Tenants should ensure they are fully conversant with these upfront fees and other costs that are involved at the outset of the tenancy before making an offer to rent and your local Winkworth office will provide written details upon request.

*[winkworth.co.uk](http://winkworth.co.uk)*

**Winkworth**

**for every step...**

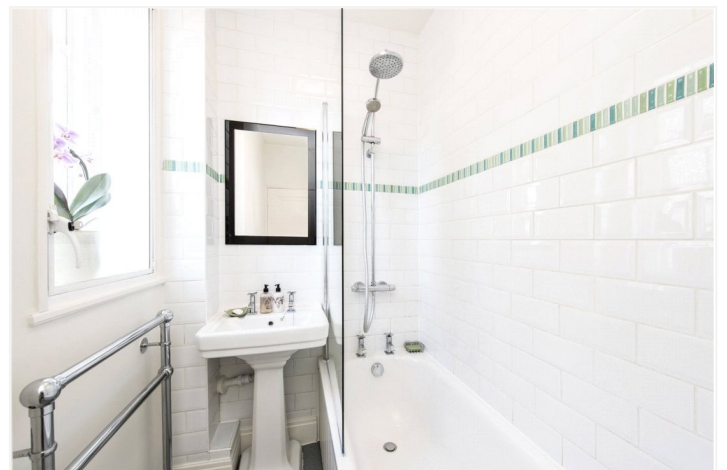


## DESCRIPTION:

This stunning first floor one bedroom apartment is in an attractive 1930's mansion block located on Streatham Hill and within easy reach of transport at Brixton, Tulse Hill & Streatham Hill. Set within manicured communal gardens with attractive water features and mature planting, this property offers peace and quiet in a tranquil setting yet is handy for all the bustling local amenities. The accommodation comprises: an entrance hall with a fitted closet and a built-in console table with shelving below. This opens to the modern, bright, fitted cream-coloured kitchen which has a large crittal window to the front with secondary glazing. Here there is a range of base and wall cabinets and inset sink. Excellent use has been made of the available space with bespoke shelving, clean lines and modern built-in appliances as well as plumbing for a washing machine. The smart reception room has good ceiling height, a large crittal bay window (also with secondary glazing) and has recently laid grey-stained wooden flooring, a picture rail and a pale grey painted colour scheme. This leads through to a good size, bright double bedroom with the same wooden flooring laid. A modern white bathroom with period-style fittings and two windows completes the living space. The property is offered to let on a part furnished basis (please ask the negotiator for a full list of items to remain in the property). Available from the 05th August.

## AT A GLANCE

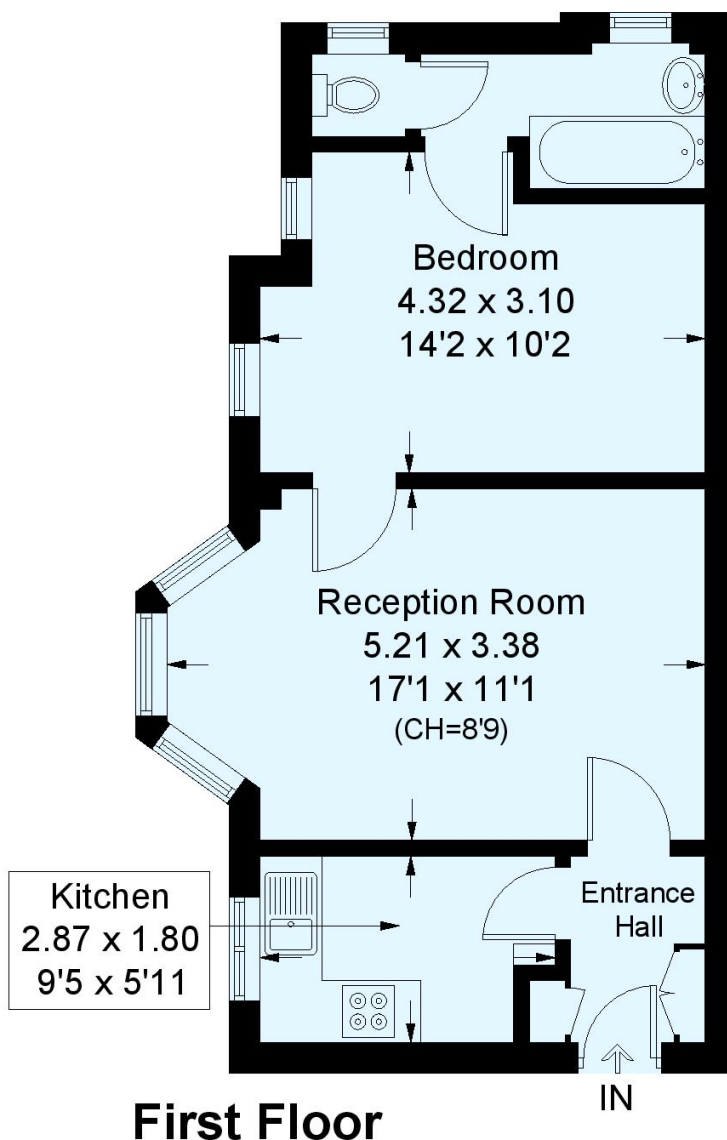
- 1930's Art Deco Apartment
- First Floor
- Double Bedroom
- Bathroom
- Fitted Kitchen
- 17ft Reception Room
- Lovely Gardens
- En-Bloc Heating
- Part Furnished
- Available from the 05th August





## Wavertree Court, Streatham Hill, SW2

Approximate Gross Internal Area  
41.7 sq m / 449 sq ft



This plan is for layout guidance only. Not drawn to scale unless stated. Windows and door openings are approximate. Whilst every care is taken in the preparation of this plan, please check all dimensions, shapes and compass bearings before making any decisions reliant upon them. (ID543163)

This floorplan is for illustration purposes only and is not to scale. The position and size of doors, windows, appliances and other features are approximate.

**Deposit:** 5 weeks rent

**Holding Deposit:** 1 weeks rent

**Council Tax Band:** B

Where no figures are shown, we have been unable to ascertain the information. All figures that are shown were correct at the time of printing.

Streatham | 020 8769 6699 | streatham@winkworth.co.uk

**Winkworth**

for every step...

*winkworth.co.uk*

Winkworth wishes to inform prospective buyers and tenants that these particulars are a guide and act as information only. All our details are given in good faith and believed to be correct at the time of printing but they don't form part of an offer or contract. No Winkworth employee has authority to make or give any representation or warranty in relation to this property. All fixtures and fittings, whether fitted or not are deemed removable by the vendor unless stated otherwise and room sizes are measured between internal wall surfaces, including furnishings.