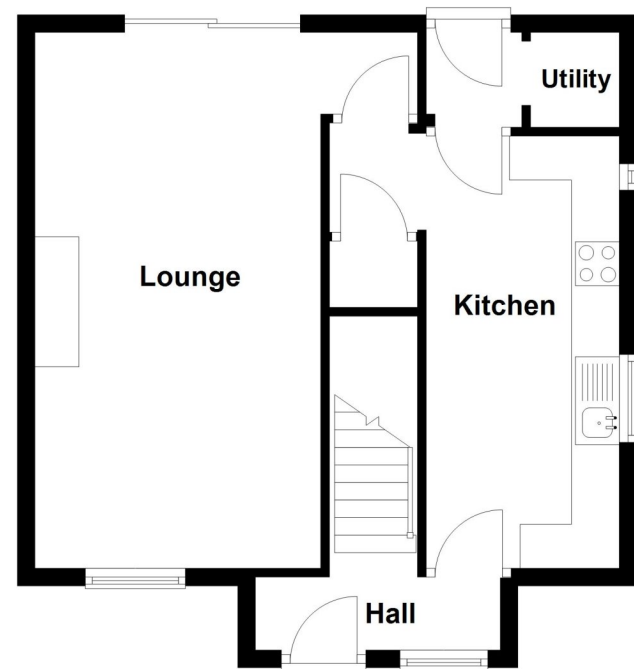


EPC TO FOLLOW

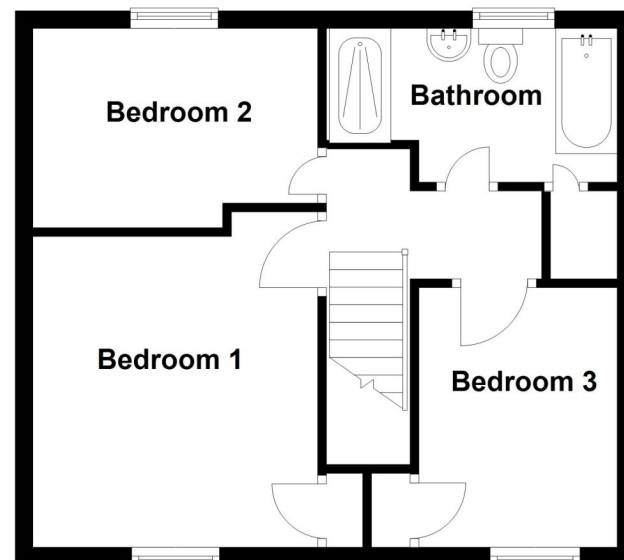
Ground Floor

Approx. 43.2 sq. metres (464.9 sq. feet)



First Floor

Approx. 39.3 sq. metres (423.1 sq. feet)



Total area: approx. 82.5 sq. metres (888.0 sq. feet)



34 Robertson Drive, Sleaford, Lincolnshire, NG34

£199,950 Freehold

NO CHAIN We are delighted to offer for sale this extremely spacious Three Bedroom Semi-Detached Home boasting a large driveway and fantastic sized rear garden.

Benefitting from a lovely modern fitted Kitchen, this family home is well presented throughout and offers well-proportioned accommodation with a Lounge/Diner which has views of the southerly aspected rear garden.

The accommodation comprises of Entrance Hall, Lounge/Diner, Kitchen, Utility Room, Three well-proportioned Bedrooms & an extremely stylish four piece suite Family Bathroom.

The property is located to the North of the town with easy access to the town centre and the Holdingham roundabout.

A viewing is highly recommended to appreciate the size of accommodation and its' fantastic plot.

NO CHAIN | STUNNING NEWLY FITTED KITCHEN | STYLISH FOUR PIECE SUITE BATHROOM | GREAT SIZED REAR GARDEN | SOUTH FACING | AMPLE PARKING | FULLY REDECORATED | UPVC DOUBLE GLAZING | GAS CENTRAL HEATING



ACCOMMODATION

Entrance Hall - 9'2" x 2'9" (2.8m x 0.84m)

Kitchen - 16x 7'3" (16x 2.2m)

Living Room - 20 x 14'3" (20 x 4.34m)

Utility Room

Bedroom One - 13 x 10'8" (13 x 3.25m)

Bedroom Two - 10'7" x 7'5" (3.23m x 2.26m)

Bedroom Three - 9'9" x 7'5" (2.97m x 2.26m)

Family Bathroom - 10'8" x 6'8" (3.25m x 2.03m)

LOCAL AUTHORITY

North Kesteven District Council

TENURE

Freehold

COUNCIL TAX BAND

A