



QUENTIN ROAD, LEWISHAM, LONDON, SE13 5DG
£1,300,000 FREEHOLD

LOCATED ON ONE OF THE AREA'S MOST SOUGHT AFTER ROADS AND JUST A FEW MINUTES FROM BLACKHEATH VILLAGE, IS THIS EXTENDED FOUR BEDROOM, TWO BATHROOM, THREE STOREY VICTORIAN HOME WITH A SUPERB KITCHEN DINER.

Blackheath | 0208 8520999 | blackheath@winkworth.co.uk

Winkworth

winkworth.co.uk

See things differently



DESCRIPTION:

Arranged over three floors, plus a cellar, the accommodation comprises; entrance hall with under stairs storage and access to the cellar. The living room and dining room have been opened up to form a large dual aspect through reception room with bespoke built in alcove storage and feature fireplaces. The large kitchen diner has been extended to the side with access to a small courtyard. Upstairs is a very large double bedroom to the front, a second double bedroom and a beautiful family bathroom with separate shower and bath, and access to a utility room beyond. Finally, the top floor provides two further bedrooms, one with ensuite shower room. This is a wonderful family home and your immediate viewing is essential.

The property is located just a few minutes' walk from Blackheath Village (0.25 miles) with its array of boutique shops, farmers market, restaurants, bars and station. The heath is just a few minutes walk and the fabulous Royal Greenwich Park is just 0.7 miles with Greenwich town centre beyond. Greenwich maintains a quaint rural village feel and is steeped in history from the old Royal Naval hospital, the Royal Observatory, the National Maritime Museum, and the spectacularly restored Cutty Sark. Greenwich's covered market is one of London's best and attracts people from all over the capital. Surrounding the market, you'll find characterful boutiques and independent shops offering everything from toys and clothes to organic fruit and veg, artisan breads and cheeses. There are fantastic transport links with Blackheath Station giving access to London Bridge, Charing Cross and Victoria amongst others with access to the, DLR (0.75 miles Lewisham) bus, riverboat, foot tunnel and cable car all within the area. The area is minutes from Canary Wharf, the City and central London; Just one of the reasons why it's increasingly popular with young professionals and commuters. The O2 is also close by as are several highly sought-after Independent Schools including; Blackheath Preparatory School, The Pointer School, Heath House Preparatory School, Blackheath High Junior School, Blackheath High Seniors School, Colfes (1.4 miles) and Eltham College (2.4 miles) as are the Ofsted "outstanding" John Ball and St Margarets primary schools.

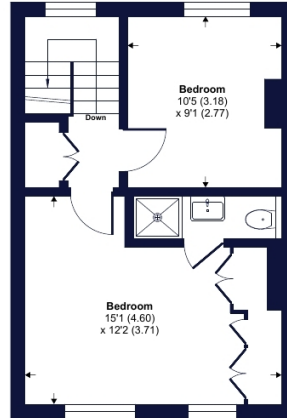




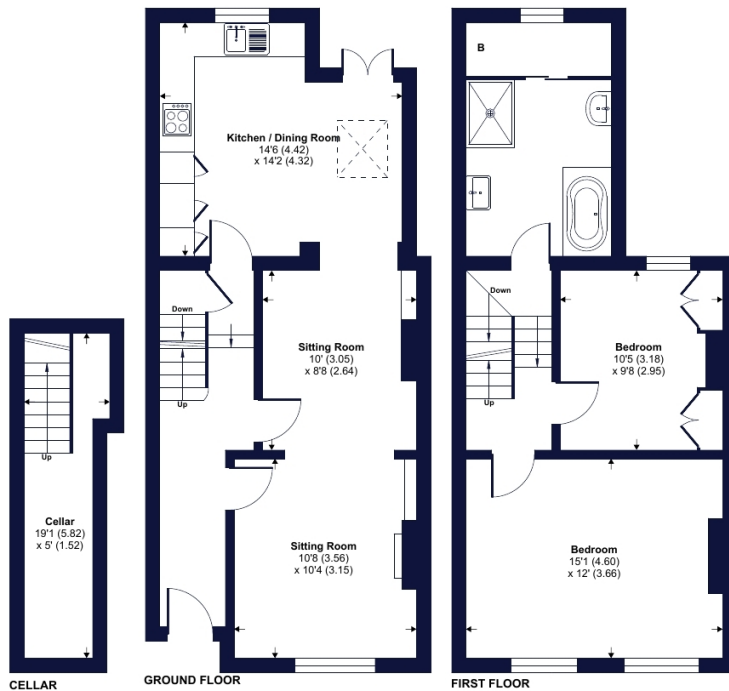
Quentin Road, Lewisham, London, SE13

Approximate Area = 1402 sq ft / 130.2 sq m

For identification only - Not to scale



SECOND FLOOR



CELLAR

GROUND FLOOR

FIRST FLOOR



Floor plan produced in accordance with RICS Property Measurement 2nd Edition, Incorporating International Property Measurement Standards (IPMS2 Residential). © nchecom 2024. Produced for Winkworth. REF: 1208106

Winkworth

This floorplan is for illustration purposes only and is not to scale. The position and size of doors, windows, appliances and other features are approximate. Any lease and service charge details have been provided by the vendor. Any interest party should have these checked by a solicitor as part of the purchase process.

Blackheath | 0208 8520999 | blackheath@winkworth.co.uk

Winkworth

winkworth.co.uk

See things differently

Winkworth wishes to inform prospective buyers and tenants that these particulars are a guide and act as information only. All our details are given in good faith and believed to be correct at the time of printing but they don't form part of an offer or contract. No Winkworth employee has authority to make or give any representation or warranty in relation to this property. All fixtures and fittings, whether fitted or not are deemed removable by the vendor unless stated otherwise and room sizes are measured between internal wall surfaces, including furnishings.