



LANSDOWNE ROAD, W11

£611.54 PER WEEK (£2,650.00 PCM) Furnished

A VERY BRIGHT AND SPACIOUS TWO DOUBLE BEDROOM FLAT ON THE GROUND FLOOR OF THIS CORNER BUILDING WITH DIRECT ACCESS TO THE STUNNING GARDENS BEHIND LOCATED ON THIS PRESTIGIOUS ROAD IN THE HEART OF NOTTING HILL.

Long Let, 2 Bedrooms, 1 Reception Room, 1 Bathroom, Flat/Apartment, Ground Floor, Patio, Communal Gardens, Unfurnished, 657 Approx Sq Ft.

Winkworth



DESCRIPTION:

The flat comprises large double reception/kitchen, two similar sized double bedrooms and family bathroom. The flat has been redecorated throughout and has plenty of natural light. The building further benefits from a shared patio leading out to the communal gardens of which there is also use (Charges may apply). The property is offered unfurnished and viewings are highly recommended.

LOCATION:

Lansdowne Road runs from Holland Park to Ladbroke Grove. This property is located where Lansdowne Road joins Ladbroke Grove, a short walk from the famous Portobello Road and all the local restaurants, shops and bars.

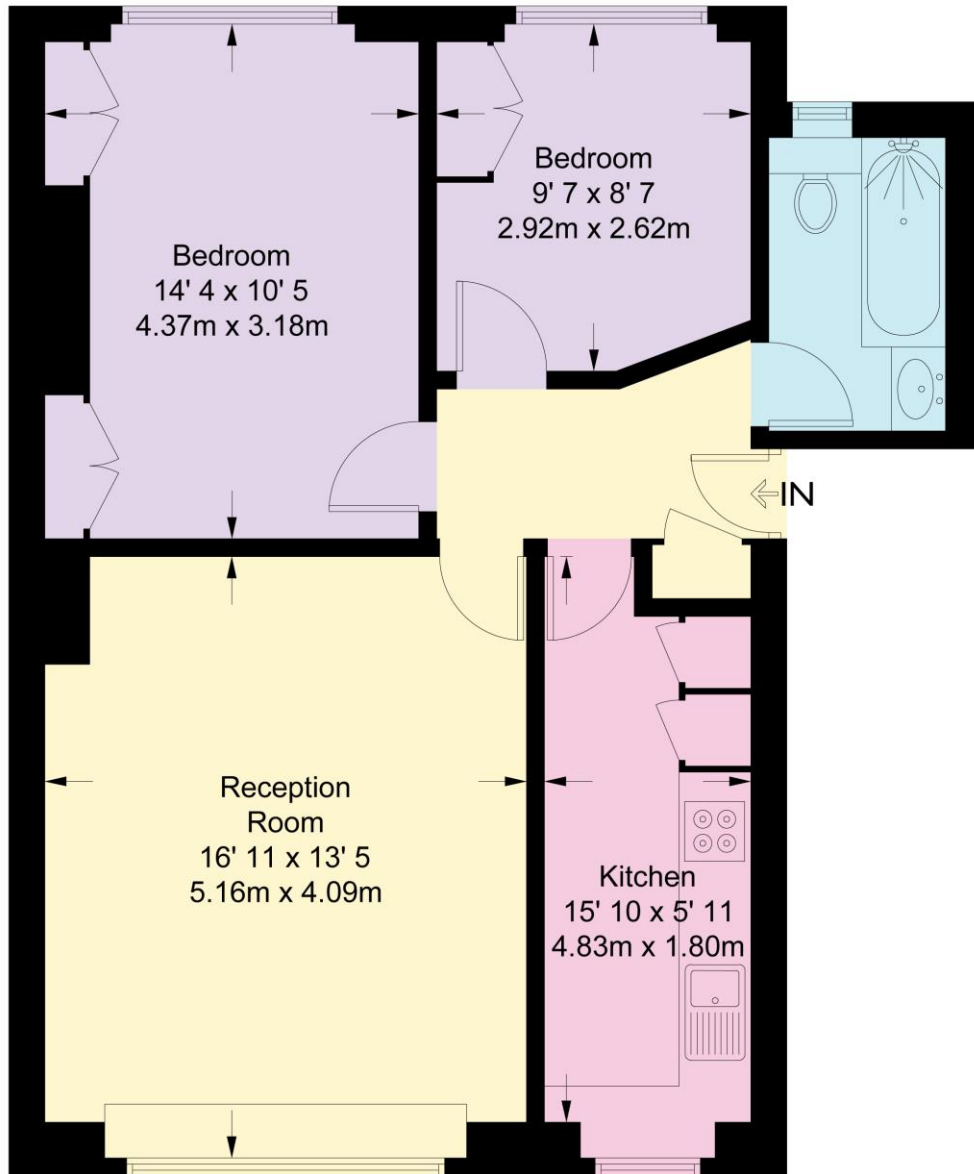
LOCAL AUTHORITY:

Royal Borough of Kensington and Chelsea (Band F)



Lansdowne Road

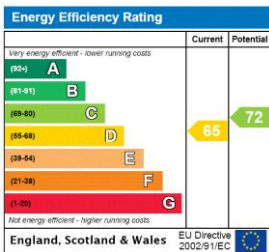
Approximate Gross Internal Area = 657 sq ft / 61 sq m



Ground Floor

This plan is not to scale and must be used as layout guidance only. All measurements and areas are approximate and should not be relied upon to provide accurate information. This plan must not be relied upon when making property valuations, design considerations or any other such relevant decisions. We accept no responsibility or liability (whether in contract, tort or otherwise) in relation to any loss whatsoever arising from or in connection with any use of this plan or the adequacy, accuracy or completeness of it or any information within it.

This floorplan is for illustration purposes only and is not to scale. The position and size of doors, windows, appliances and other features are approximate.



Notting Hill | 0207 727 3227 | nottinghill@winkworth.co.uk



winkworth.co.uk

for every step...

winkworth wishes to inform prospective buyers and tenants that these particulars are a guide and act as information only. All our details are given in good faith and believed to be correct at the time of printing but they don't form part of an offer or contract. No winkworth employee has authority to make or give any representation or warranty in relation to this property. All fixtures and fittings, whether fitted or not are deemed removable by the vendor unless stated otherwise and room sizes are measured between internal wall surfaces, including furnishings.