



Elm Park Gardens, West Chelsea, London, SW10

£1,211.54 per week* / £5,250 per month – Unfurnished

An exceptional, fully renovated two double-bedroom apartment located on the first floor of this attractive period building.

2 Bedrooms | 1 Reception Room | 2 Bathrooms | Balcony | Access to Communal Garden | First Floor Flat | 1,006 Approx sq ft

APPLICANT FEES MAY BE APPLICABLE
DEPOSIT OF 6 WEEKS' RENT
HOLDING DEPOSIT OF 1 WEEK'S RENT

Winkworth

winkworth.co.uk

for every step...



DESCRIPTION

The property is laterally arranged and is beautifully refurbished with bespoke joinery, high-end appliances and wooden flooring throughout.

Boasting a bright open-plan kitchen/reception room and two large double bedrooms, with the principal being en-suite and the second with excellent built-in storage. There is also a further family bathroom. Both bedrooms are quietly positioned to the rear of the flat overlooking the communal gardens, to which the flat has direct access from the building.

The property is available from the beginning of January on an unfurnished basis.



ACCOMMODATION

2 Bedrooms, 1 Reception Room,
2 Bathrooms, Balcony, First Floor,
Access to Communal Garden,
Unfurnished, 1,006 Approx Sq ft

COUNCIL TAX BAND

Band G

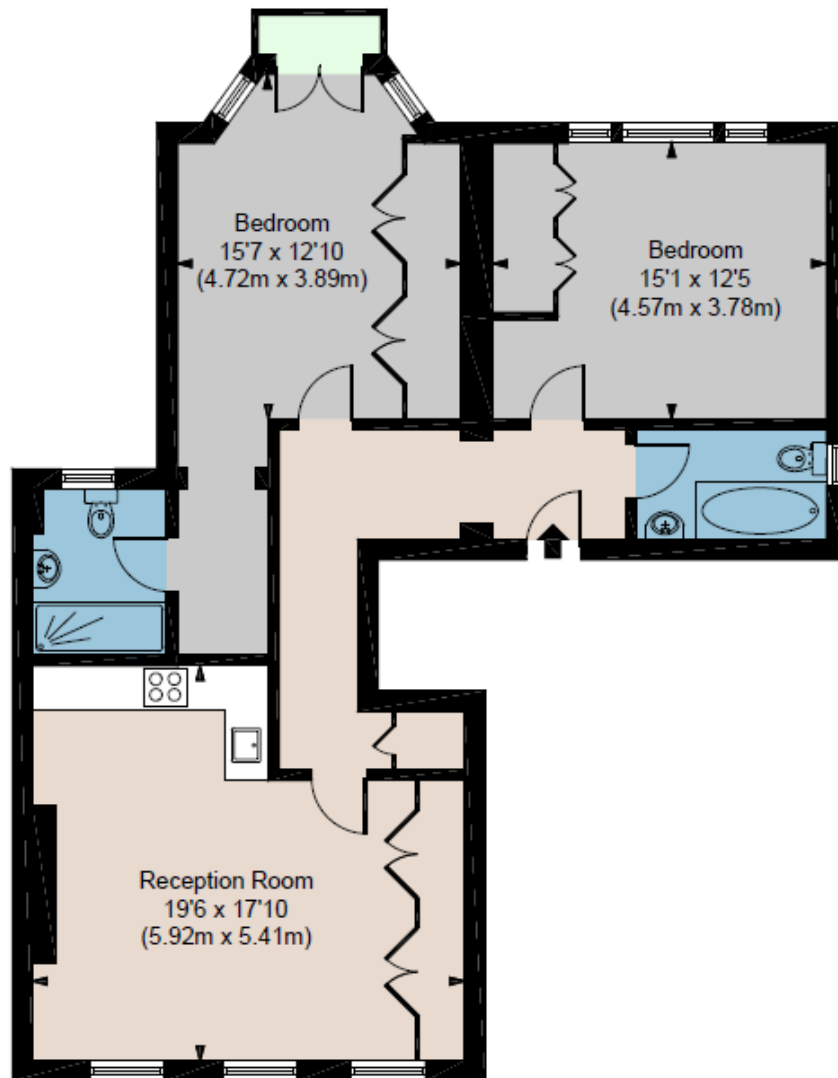


ELM PARK GARDENS SW10

APPROX. GROSS INTERNAL AREA *
1006 Ft² - 93.4 M²

Illustration For Identification Only, Not to Scale
All Calculations include Any/All Areas Under 1.5m Head Height.

* As Defined by RICS - Code of Measuring Practice



FIRST FLOOR

Floorplan is for illustrative purposes only and is not to scale.
Every attempt has been made to ensure the accuracy of the floorplan shown, however all measurements, fixtures, fittings and data shown are an approximate interpretation for illustrative purposes only.
Liability for errors, omissions or mis-statement through negligence or otherwise is hereby excluded.

CPCREATIVE
PROPERTY MARKETING

This floorplan is for illustration purposes only and is not to scale. The position and size of doors, windows, appliances and other features are approximate.

**Please note, Rent cannot be paid on a weekly basis*

** FURNITURE IN IMAGES VIA CGI **

South Kensington Lettings | 020 7370 6767 | lettings.southken@winkworth.co.uk

winkworth.co.uk

Winkworth

for every step...

Winkworth wishes to inform prospective buyers and tenants that these particulars are a guide and act as information only. All our details are given in good faith and believed to be correct at the time of printing but they don't form part of an offer or contract. No Winkworth employee has authority to make or give any representation or warranty in relation to this property. All fixtures and fittings, whether fitted or not are deemed removable by the vendor unless stated otherwise and room sizes are measured between internal wall surfaces, including furnishings.