



SHEPHERDESS WALK, LONDON, N1  
**£2,250,000**

**A TRULY SUBLIME, THREE BEDROOM WAREHOUSE  
CONVERSION WITH SENSATIONAL ROOF TERRACE IN  
ISLINGTON.**

Clerkenwell | 020 7405 1288 | [clerkenwell@winkworth.co.uk](mailto:clerkenwell@winkworth.co.uk)

**Winkworth**

for every step...

[winkworth.co.uk](http://winkworth.co.uk)





## DESCRIPTION:

The property is one of only a handful of unique flats set within the sought-after Shepherdess Walk Building, a collection of bespoke apartments in a characterful Victorian warehouse conversion.



**Winkworth**

for every step...



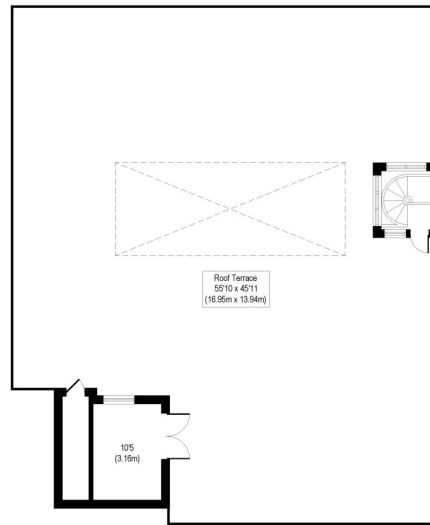
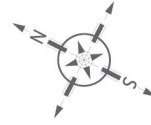
**Winkworth**

for every step...

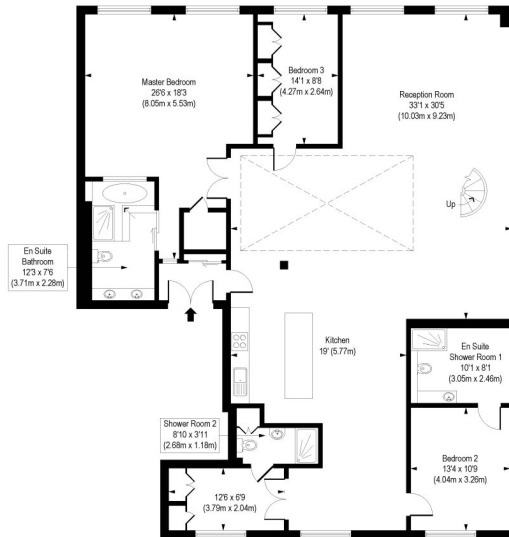


# Shepherdess Walk, N1

Approx. Gross Internal Floor Area 2235 sq. ft / 207.65 sq. m



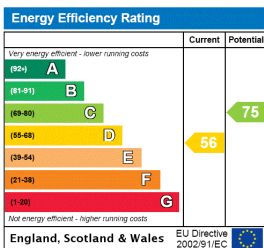
Fifth Floor  
Gross Internal  
Floor Area 33 sq ft



Fourth Floor  
Gross Internal  
Floor Area 2202 sq ft

COMPLIANT WITH RICS CODE OF MEASURING PRACTICE. Floorplan is for illustrative purposes only and is not to scale. Every attempt has been made to ensure the accuracy of the floorplan shown, however all measurements, fixtures, fittings and data shown are an approximate interpretation for illustrative purposes only. Liability for errors, omissions or mis-statement through negligence or otherwise is hereby excluded.

This floorplan is for illustration purposes only and is not to scale. The position and size of doors, windows, appliances and other features are approximate.



Clerkenwell | 020 7405 1288 | clerkenwell@winkworth.co.uk



for every step...

winkworth.co.uk

Winkworth wishes to inform prospective buyers and tenants that these particulars are a guide and act as information only. All our details are given in good faith and believed to be correct at the time of printing but they don't form part of an offer or contract. No Winkworth employee has authority to make or give any representation or warranty in relation to this property. All fixtures and fittings, whether fitted or not are deemed removable by the vendor unless stated otherwise and room sizes are measured between internal wall surfaces, including furnishings.