



GILLESPIE COURT, QUEENSLAND ROAD, LONDON, N7
£380 PER WEEK FURNISHED

A STUNNING MUST-SEE ONE BEDROOM APARTMENT SET WITHIN THIS MODERN DEVELOPMENT

Islington | 0207 354 2480 | islington@winkworth.co.uk

Winkworth

Tenant Fees Apply: Details of fees for tenant referencing, tenancy agreement admin fees and renewal fees are available on the Winkworth website and the link can be found with the displayed rent for the property. Tenants should ensure they are fully conversant with these upfront fees and other costs that are involved at the outset of the tenancy before making an offer to rent and your local Winkworth office will provide written details upon request.

winkworth.co.uk

See things differently



DESCRIPTION:

A stunning must-see one bedroom apartment set within this sought-after development located in the heart of Islington. Finished to the highest standard, featuring wooden floors, a large bright open plan kitchen/diner and under floor heating. The property also benefits from residents facilities including use of an on-site gymnasium, 24 hour concierge service and a communal garden. Moments from the Emirates Stadium, Gillespie Court is also close to a variety of transport links including Holloway Road tube station and Drayton Park over ground, along with a great choice of vibrant shops, restaurants and cafés in Islington and Highbury. Furnished.

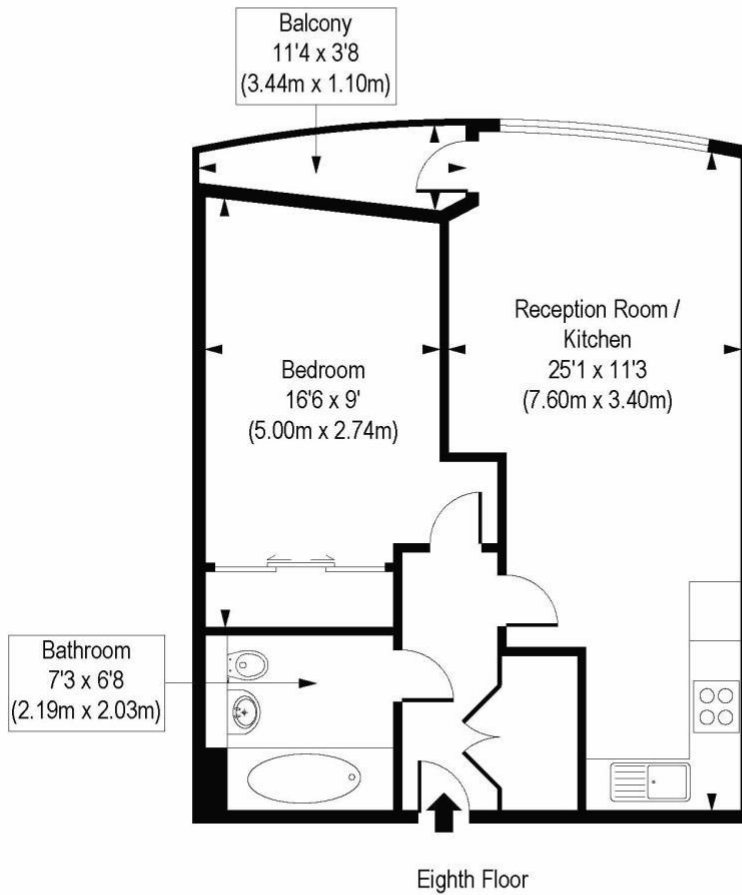
Winkworth



Winkworth

Gillespie Court, N7

Approx. Gross Internal Area 494 sq. ft / 45.92 sq. m



COMPLIANT WITH RICS CODE OF MEASURING PRACTICE Floorplan is for illustrative purposes only and is not to scale. Every attempt has been made to ensure the accuracy of the floorplan shown, however all measurements, fixtures, fittings and data shown are an approximate interpretation for illustrative purposes only. Liability for errors, omissions or mis-statement through negligence or otherwise is hereby excluded.

This floorplan is for illustration purposes only and is not to scale. The position and size of doors, windows, appliances and other features are approximate.

Islington | 0207 354 2480 | islington@winkworth.co.uk



winkworth.co.uk

See things differently

Winkworth wishes to inform prospective buyers and tenants that these particulars are a guide and act as information only. All our details are given in good faith and believed to be correct at the time of printing but they don't form part of an offer or contract. No Winkworth employee has authority to make or give any representation or warranty in relation to this property. All fixtures and fittings, whether fitted or not are deemed removable by the vendor unless stated otherwise and room sizes are measured between internal wall surfaces, including furnishings.