



HILLGATE PLACE, W8
£2,100,000 FREEHOLD

A CHARMING THREE BEDROOM VICTORIAN TERRACED HOUSE WITH LARGE GARDEN SITUATED IN THE HEART OF HILLGATE VILLAGE.

Kensington | 020 7727 1500 | kensington@winkworth.co.uk

winkworth.co.uk

Winkworth

for every step...



DESCRIPTION:

An exceptionally charming three bedroom Victorian terraced house with large garden situated in the heart of Hillgate Village. The accommodation includes a south facing reception room on the raised ground floor and a spacious kitchen/dining room on the lower ground floor with glazed doors onto the exceptional 28' (8.7m) paved garden. The three bedrooms are served by an en suite shower room and a family bathroom.

Hillgate Place is located within the Royal Borough of Kensington & Chelsea and situated quietly just off Notting Hill Gate and close to Kensington High Street with their many excellent shops, restaurants and transport facilities. The green open spaces of Kensington Gardens and Holland Park are also within easy walking distance.

ACCOMMODATION:

Reception Room | Kitchen/Dining Room | Three Bedrooms | En Suite Shower Room | Family Bathroom | 28' Garden

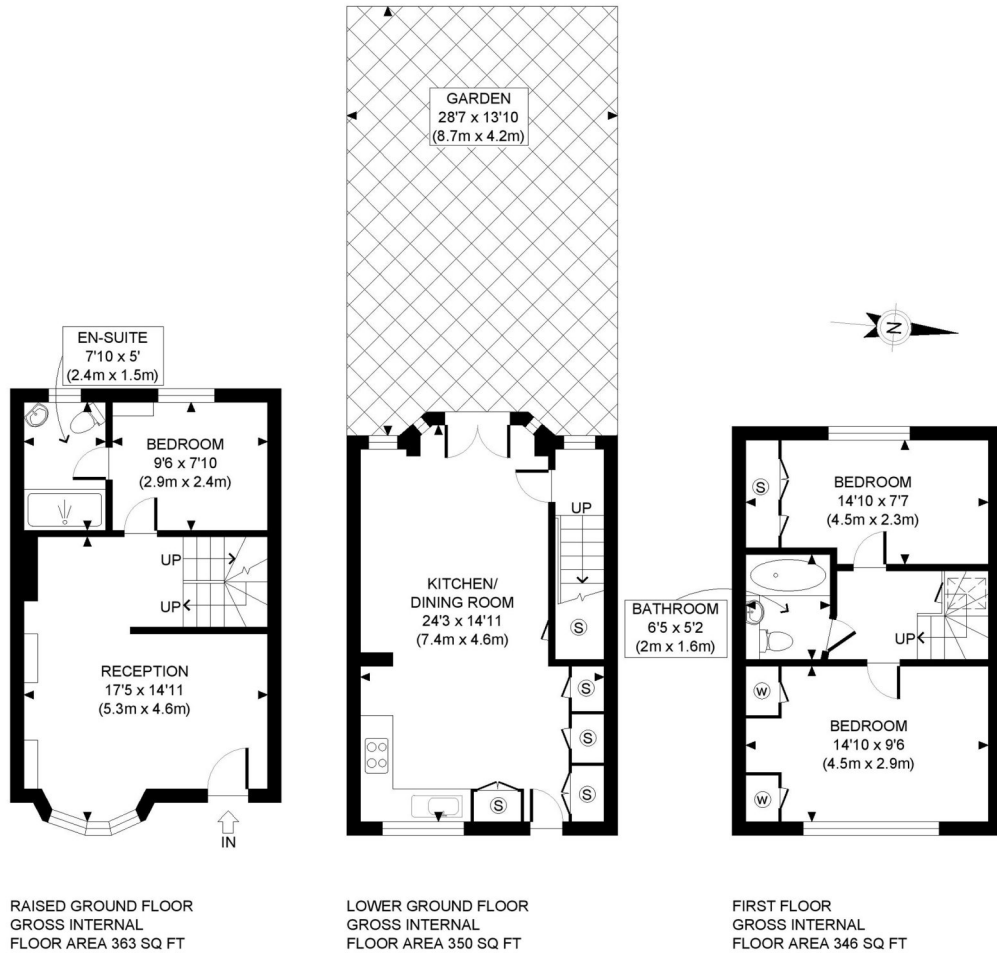
LOCAL AUTHORITY:

The Royal Borough of Kensington & Chelsea

NEAREST PUBLIC TRANSPORT:

Notting Hill Gate
Holland Park
High Street Kensington



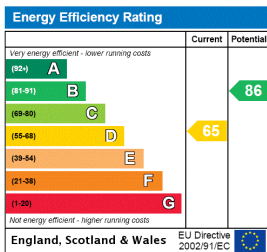


Winkworth

This plan is for illustrative purposes only and should be used as such by any prospective client. Whilst every attempt has been made to ensure the accuracy of the Floor Plan contained here, measurements of the doors, windows, rooms and any other items are approximate and no responsibility is taken for any errors, omissions, or misstatement. The services, systems and appliances shown have not been tested and no guarantee as to the operability or efficiency can be given.

PROPERTY PHOTO PLANS
THE STOP SHOP FOR PROPERTY MARKETING

This floorplan is for illustration purposes only and is not to scale. The position and size of doors, windows, appliances and other features are approximate.



Tenure: Freehold
Council tax band: G

Please note all figures are approximate

Kensington | 020 7727 1500 | kensington@winkworth.co.uk



winkworth.co.uk

for every step...