



**Hilltop Road**

Ferndown BH22 9QT

**OFFERS OVER £350,000**





OFFERS OVER £350,000  
FREEHOLD

An exciting opportunity to purchase this two/three bedroom house with excellent reception space conveniently located for amenities and woodland walks.

There is a huge amount of potential for extension and renovation due to the properties layout and size of plot and in addition to off road parking there is also **NO ONWARD CHAIN.**

Two/Three Bedrooms  
Freehold House  
Utility Room  
Guest WC  
No Onward Chain  
Kitchen/Diner  
Large Conservatory  
Off Road Parking  
Large Plot With Lots Of Potential  
Close To Amenities

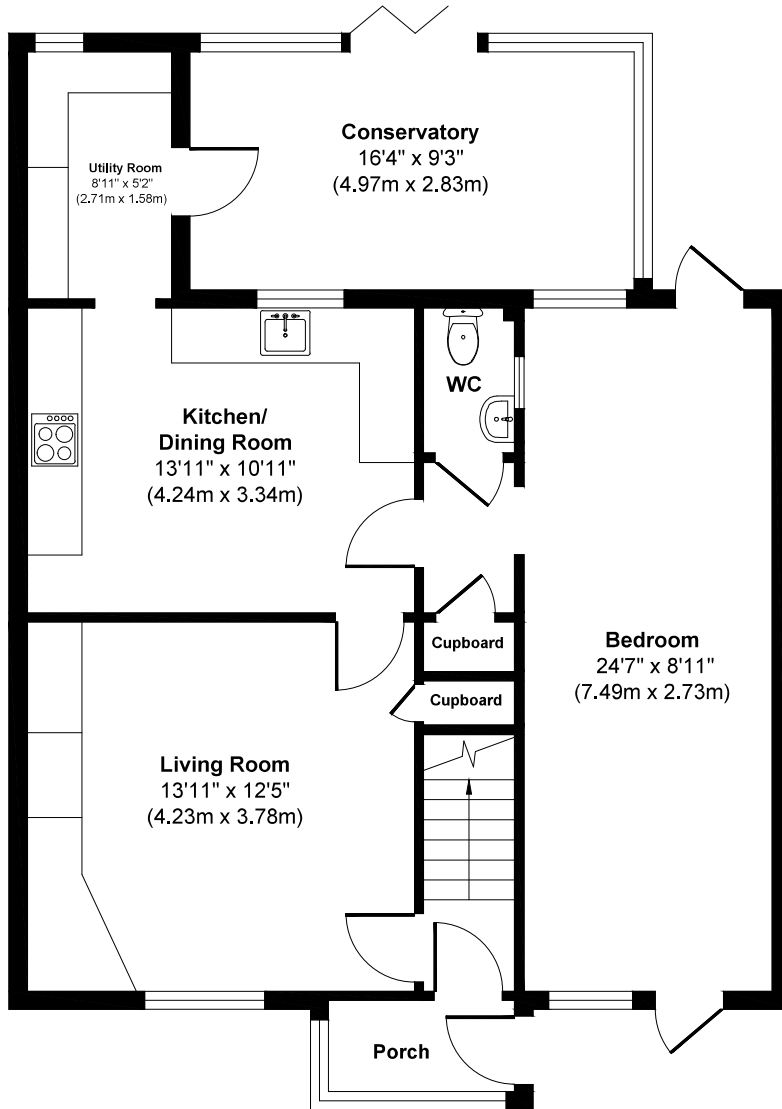
EPC Tbc | Council Tax Band C

01202 434365  
ferndown@winkworth.co.uk

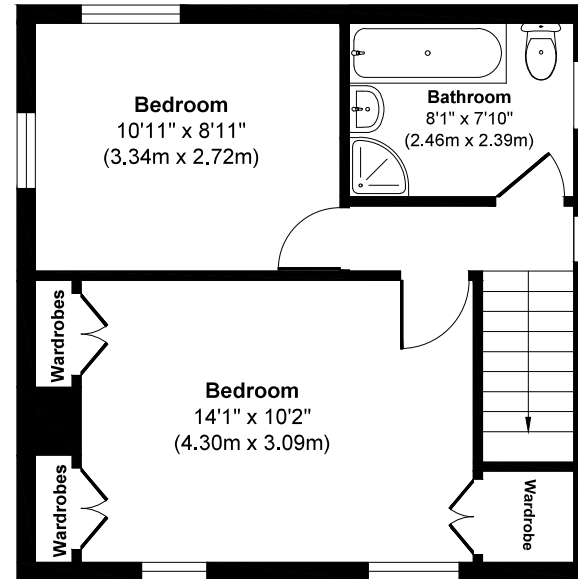




# Hilltop Road



**Ground Floor**  
Approximate Floor Area  
883 sq. ft  
(82.05 sq. m)



**First Floor**  
Approximate Floor Area  
375 sq. ft  
(34.86 sq. m)

**Approx. Gross Internal Floor Area 1256 sq. ft / 116.92 sq. m**

Illustration for identification purposes only, measurements approximate and not to scale



## LOCATION

This popular, quiet residential location is just a short distance from Ferndown town centre which has a range of shops, cafes and amenities including an M&S Foodhall. Ferndown Schools are within walking distance and there are bus routes close by giving you easy access to Bournemouth, Poole & Wimborne all of which have an excellent range of shops, bars, restaurants and leisure facilities. Ferndown championship Golf Course is conveniently located nearby, award winning sandy beaches are just twenty minutes away and the A31 provides quick access to the New Forest, Southampton and London.

Winkworth Ferndown

406 Ringwood Road, Ferndown, Dorset, BH22 9AU

01202 434365 | [ferndown@winkworth.co.uk](mailto:ferndown@winkworth.co.uk)

[winkworth.co.uk/ferndown](http://winkworth.co.uk/ferndown)

**Winkworth**