



119 NEWTOWN ROAD

NEWBURY RG14 7ER

A substantial detached family home, situated close to the Newbury town centre, offering a large driveway, garage, extension to the rear and an extremely generous rear garden

The open entrance hall is bright and airy with smart built in storage under the stairs, The living room is a great space to enjoy some peace and quiet and has a large bay window. There is a downstairs shower room, which will need completing, but is ready to go with all pipework, plumbing and electrics.

The kitchen diner has been extended and offers a fantastic space for socialising. the modern kitchen has skylights, flooding the room with natural light, all whilst enjoying the beautiful garden views. There is also a utility room to house white goods, with access to the garden.

To the first floor are four double bedrooms. The master offers a newly fitted ensuite and large dressing room to the side. The other three bedrooms are all double rooms. The family bathroom is decorated to an extremely high standard, with a shower over the bath, heated towel rail and skylight.

The rear garden is extremely generous with a patio area at top of the garden, with the rest being mainly laid to lawn. There is a garage at the bottom of the garden and a large storage area/additional parking to the side of the house. The front of the property is a gravel driveway with parking for up to 6 cars.



Winkworth

AT A GLANCE

- Living Room
- Kitchen Diner
- Downstairs Shower Room
- Utility Room
- Four Double Bedrooms
- Ensuite in Master
- Dressing Room
- Large Rear Garden
- Garage
- Generous Driveway

UTILITIES

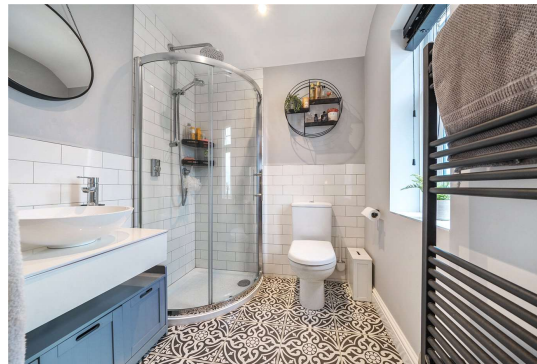
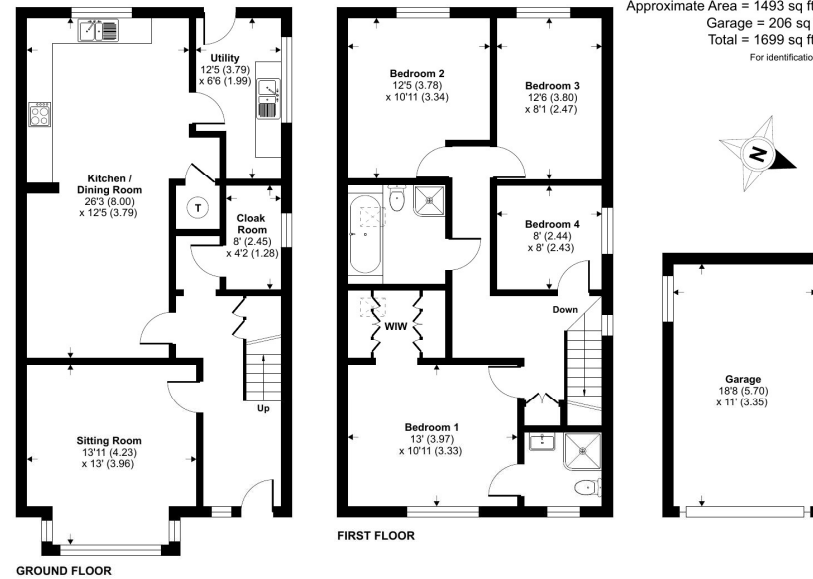
There is Ultrafast broadband available in the area and there are no known mobile coverage issues.

The property is connected to all mains and operates on mains gas central heating.

EPC - D
West Berkshire Council Tax Band - D

Newtown Road, Newbury, RG14

Approximate Area = 1493 sq ft / 138.7 sq m
Garage = 206 sq ft / 19.1 sq m
Total = 1699 sq ft / 157.8 sq m
For identification only - Not to scale



Newbury Office

43 Northbrook Street, Newbury, Berkshire RG14 1DT
01635 552552 | newbury@winkworth.co.uk

winkworth.co.uk/newbury

Winkworth

See things differently.