



BISHOPS ROAD, SW6 £399,000 FREEHOLD

An immaculately presented one bedroom flat ideally located on a very popular street in the heart of Fulham.

Fulham & Parsons Green | 020 7731 3388 | fulham@winkworth.co.uk

Winkworth

for every step...

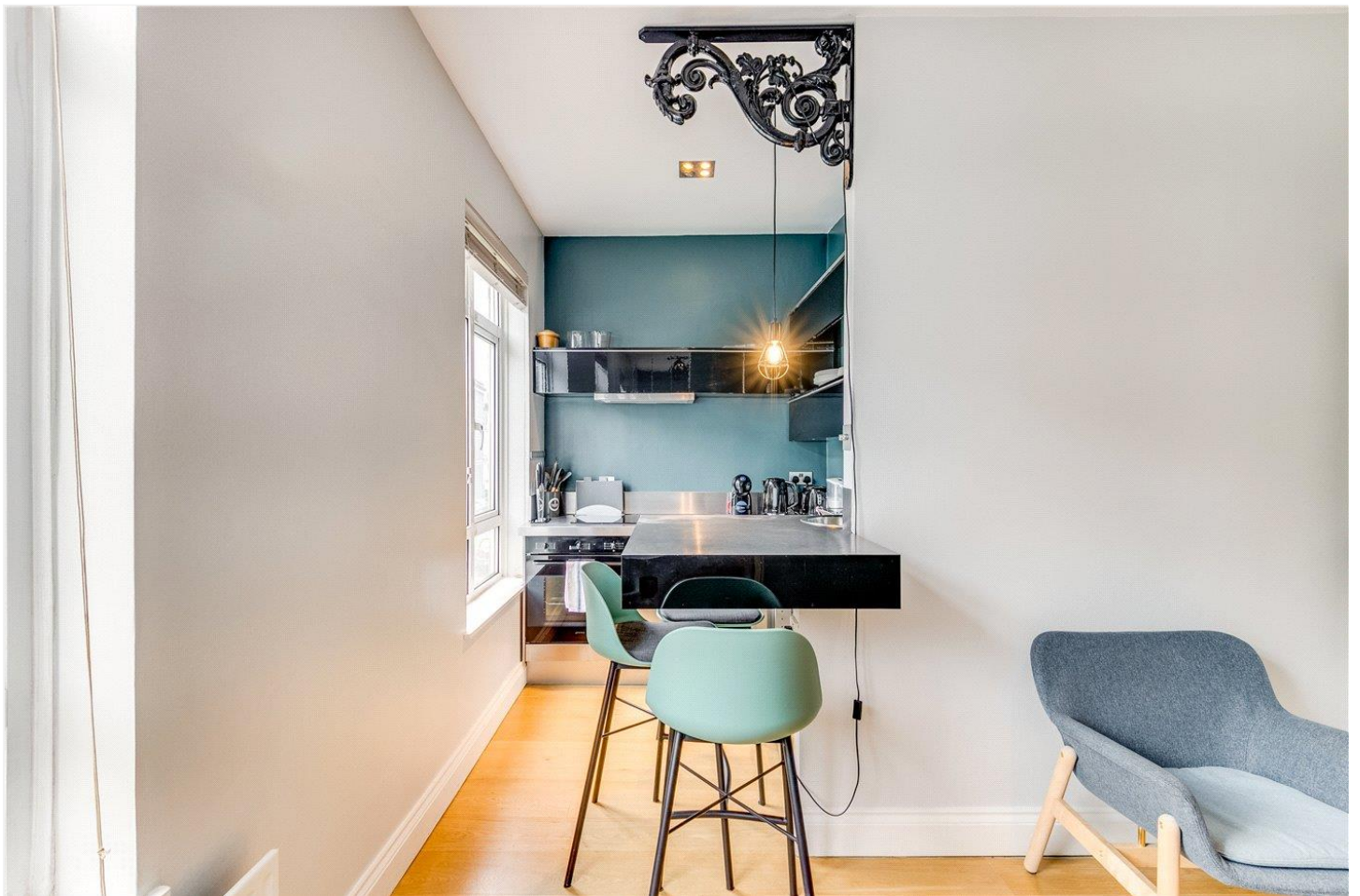
winkworth.co.uk



DESCRIPTION:

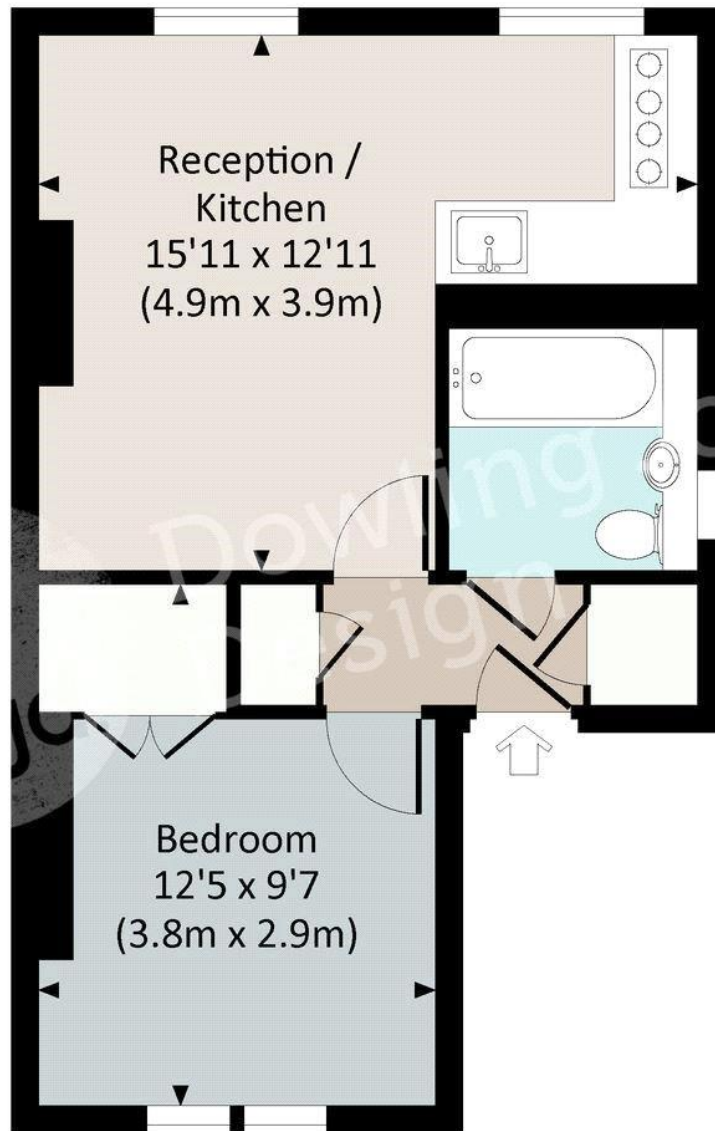
The flat has been recently refurbished and is situated on the first floor. There is an open plan kitchen/reception room which is ideal for entertaining and is flooded with natural light. The modern kitchen has a breakfast bar and a good balance of wall and base units. The double bedroom benefits from a walk in mirrored cupboard providing ample storage for your belongings and is served by a stylish tiled bathroom.

Bishops Road is located just off the Fulham Road and is moments from the large selection of independent shops, cafes, restaurants and bars on both Fulham Road and Parsons Green. Parsons Green Tube is a short walk away, along with the numerous bus routes found on Fulham and New Kings Road.



BISHOP'S ROAD, SW6

Approx. gross internal area
350 Sq Ft. / 32.5 Sq M.

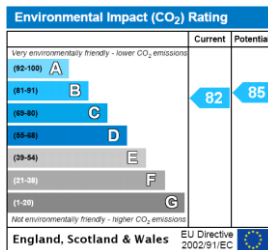
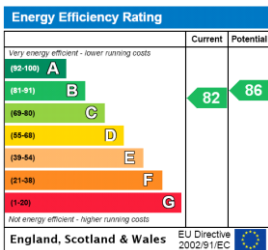


FIRST FLOOR



All measurements have been made in accordance with RICS Code of Measuring Practice which are approximate only and only for illustrative purposes. For the avoidance of doubt, Dowling Jones Design shall not be liable for any reliance on these measurements. © 2015 www.dowlingjones.com 020 7610 9933

This floorplan is for illustration purposes only and is not to scale. The position and size of doors, windows, appliances and other features are approximate.



Tenure: Freehold
Term: N/A
Service Charge: Circa £2200 per annum
Ground Rent: N/A Annually (subject to increase)
Council Tax Band: D

Where no figures are shown, we have been unable to ascertain the information. All figures that are shown were correct at the time of printing.

Fulham & Parsons Green | 020 7731 3388 | fulham@winkworth.co.uk

Winkworth

for every step...

winkworth.co.uk

Winkworth wishes to inform prospective buyers and tenants that these particulars are a guide and act as information only. All our details are given in good faith and believed to be correct at the time of printing but they don't form part of an offer or contract. No Winkworth employee has authority to make or give any representation or warranty in relation to this property. All fixtures and fittings, whether fitted or not are deemed removable by the vendor unless stated otherwise and room sizes are measured between internal wall surfaces, including furnishings.