



McIntyre Court, Studley Road, London, SW4

£325,000 Leasehold

A fantastic opportunity to acquire an un-modernised well-proportioned purpose built two bedroom first floor flat in Stockwell.

Winkworth

LOCATION

Mcintyre Court is located on Studley Road which is a quiet road, hidden between Clapham Road and Larkhall Park. Stockwell station is moments away with direct access to the Victoria and Northern Line.

DESCRIPTION

This flat consists of two double bedrooms, a kitchen, a reception room, a bathroom and a separate toilet as well as a balcony. The flat is unmodernised and has huge potential.

The bedrooms are both double bedrooms with the master being slightly larger and facing south where lots of light can fill the room.

The kitchen has excellent potential and plenty of space for cupboards. The whole flat comes with storage including the hallway which has multiple cupboards.

The reception room is a large area with room for a seating area and dining table and chairs. A south-facing balcony leads off the room and acts as a peaceful space to sit in the sun.

The bathroom can fit a bath and sink and the toilet sits separately in its own space.

A large communal garden occupies the inside of the court and makes an excellent space to relax.

SERVICE CHARGE, GROUND RENT AND COUNCIL TAX

Service Charge - £1,510.97 per annum

Ground Rent - peppercorn

Council Tax Band - B

UTILITIES

Electricity – mains connected

Gas – mains connected

Water – mains connected

Heating – gas central heating

Sewerage – mains connected

Broadband – Superfast Fiber Broadband

LOCAL AUTHORITY

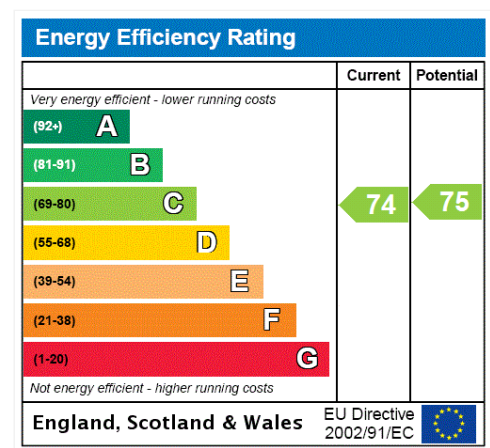
Lambeth

TENURE

Leasehold – new lease 125 years

DIRECTIONS

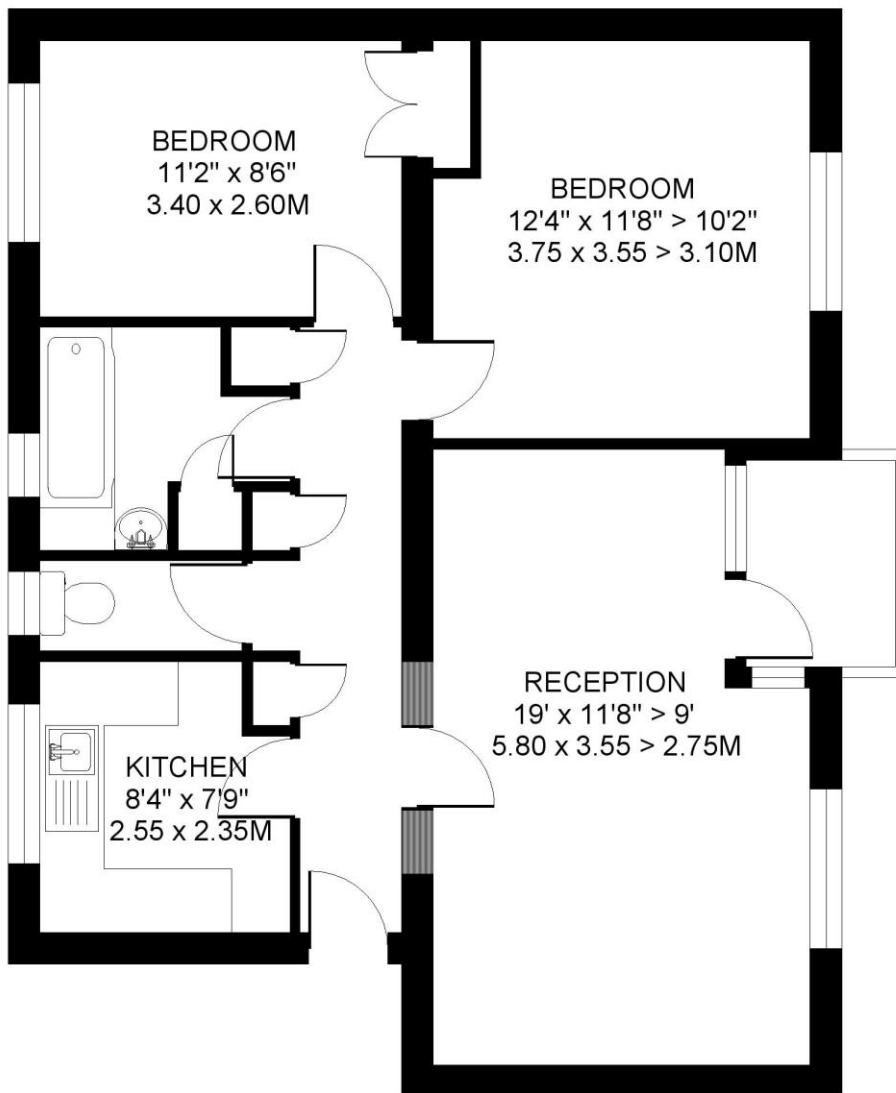
Stockwell Station is only 0.2 miles. Clapham North is 0.7 miles and Clapham high street is 0.8 miles. A variety of buses can also get you into central London from Stockwell Station bus stop on Clapham Road.





MCINTYRE COURT. SW4
2 BEDROOM FLAT

Approximate gross floor area
683 SQ.FT / 63.5 SQ.M.



FIRST FLOOR

This floorplan is for illustration purposes only and is not to scale. The position and size of doors, windows, appliances and other features are approximate.

Copyright: These plans should not be reproduced by any other person, without permission.
Floorplan produced for Winkworth by Floorplanners 07801 228850

Kennington | 020 7587 0600 | kennington@winkworth.co.uk