



Stanlake Road, W12

£600,000 Share of Freehold

A fabulous two bedroom raised ground floor flat with private garden, in the heart of Shepherds Bush.

Reception Room | Open Plan Kitchen | 2 Bedrooms | Bathroom | Garden | 679 Sq Ft / 63 Sq M | Council Tax Band E | EPC Rating Band D

Winkworth



LOCATION

Stanlake Road is an attractive quiet residential tree lined street, moments from all the local amenities and transport links Shepherd's Bush has to offer. Television Centre, Soho House and Westfield London are all within easy reach, with Shepherd's Bush Market (Hammersmith and City and Circle line) and Shepherds Bush (Central line and Overground) being the closest stations.

DESCRIPTION

Superbly presented throughout, the property offers accommodation comprising entrance hall, reception room with bay window, period fireplace and high ceilings, kitchen, mezzanine storage area, bathroom and two double bedrooms. The flat further benefits from a good size private garden and share of freehold.





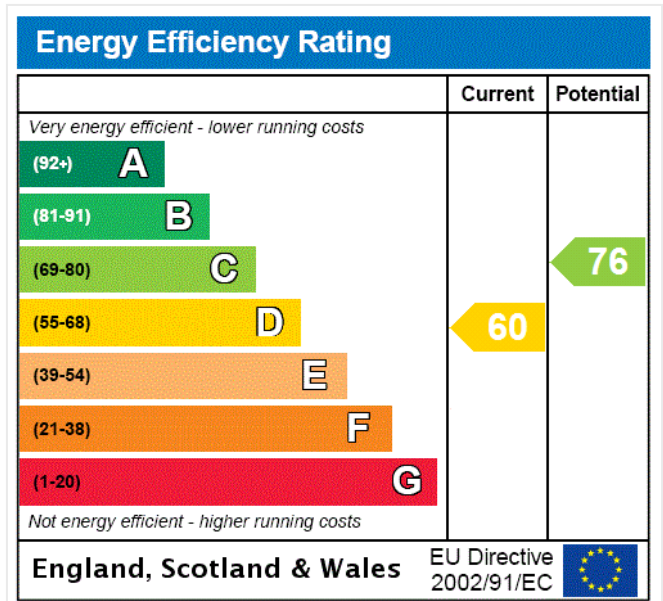
LOCAL AUTHORITY

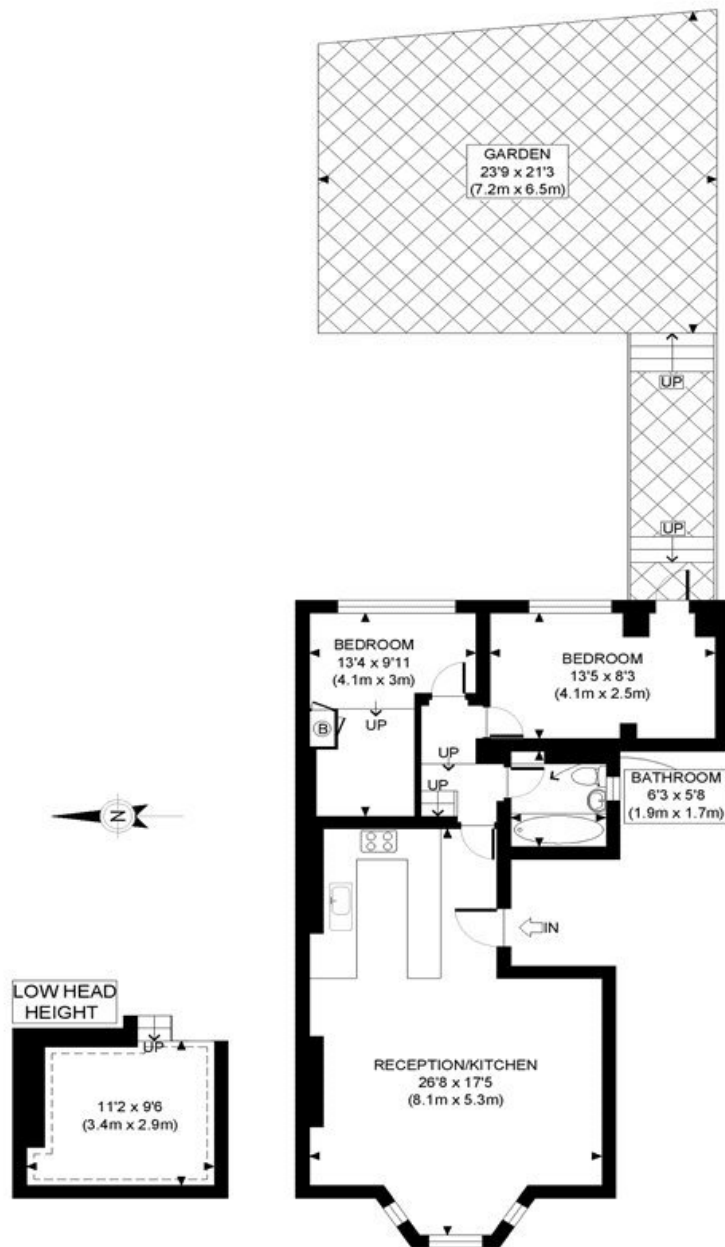
London Borough of Hammersmith & Fulham

TENURE

Share of Freehold.

PRICE: £600,000 Share of Freehold





MEZZANINE
GROSS INTERNAL
FLOOR AREA 107 SQ FT

RAISED GROUND FLOOR
GROSS INTERNAL
FLOOR AREA 679 SQ FT

APPROX. GROSS INTERNAL FLOOR AREA EXCLUDING MEZZANINE AREA: 679 SQ FT/ 63 SQM
APPROX. GROSS INTERNAL FLOOR AREA INCLUDING MEZZANINE AREA: 786 SQ FT/ 73 SQM

Winkworth

This plan is for illustrative purposes only and should be used as such by any prospective client. Whilst every attempt has been made to ensure the accuracy of the Floor Plan contained here, measurements of the doors, windows, rooms and any other items are approximate and no responsibility is taken for any errors, omissions, or misstatement. The services, systems and appliances shown have not been tested and no guarantee as to the operability or efficiency can be given.

PROPERTY PHOTO PLANS
ONE STOP SHOP FOR PROPERTY MARKETING

The displayed square footage is taken from the floor plans with measurements created using the Royal Institute of Chartered Surveyors' Code of Practice for Measuring. These measurements are approximate and included for illustrative purposes only. Winkworth does not make any representation as to the accuracy of these measurements and you should seek to verify them for yourself. Winkworth accept no liability for any loss you may suffer if you rely on these measurements.

Shepherds Bush | 020 8735 3266 | shepherdsbush@winkworth.co.uk

Winkworth

for every step...

Under the Property Misdescriptions Act 1991, these Particulars are a guide and act as information only. All details are given in good faith and are believed to be correct at time of printing. Winkworth give no representation as to their accuracy and potential purchasers or tenants must satisfy themselves by inspection or otherwise as to their correctness. No employee of Winkworth has authority to make or give any representation or warranty in relation to this property.