



CASEWICK ROAD, LONDON, SE27
£535,000 LEASEHOLD

A WELL PRESENTED TWO BEDROOM, GROUND FLOOR, VICTORIAN MASONETTE.

West Norwood | 02086700035 | westnorwood@winkworth.co.uk



DESCRIPTION:

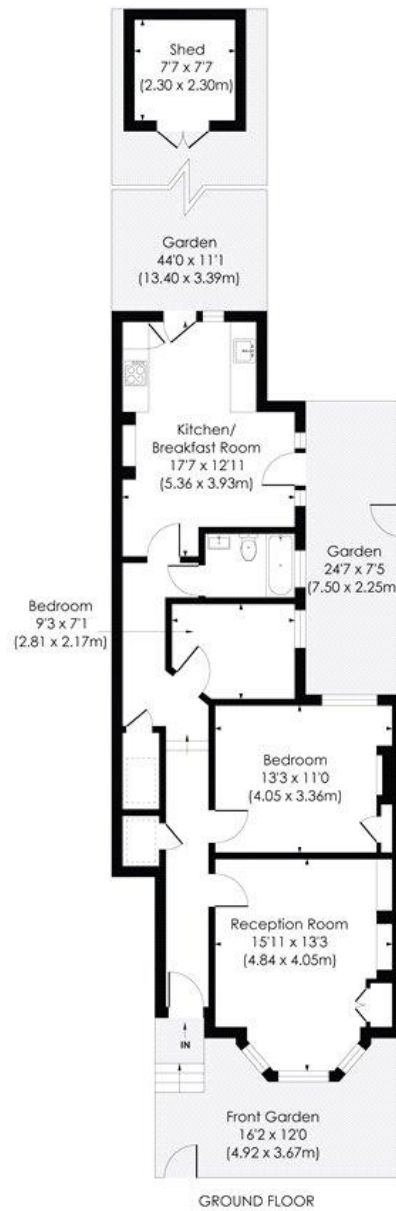
A well presented two bedroom, ground floor, Victorian Maisonette, located on a popular residential road. Further accommodation comprises; reception room, kitchen/breakfast room, bathroom and private rear garden. The property further benefits from a long lease. Nearest transport is at West Norwood station with its frequent services to London Bridge and Victoria. The shops, cafes, bars, along Knights Hill are also close to hand as are the leisure centre and the Picture house cinema.





CASEWICK ROAD, SE27

Approx. Gross Internal Floor Area
819 Sq. ft/76.07 Sq. m



© Pixangle Property Marketing Ltd. info @pixangle.com Tel: 0208 870 2118

pixangle
PROPERTY MARKETING

This floor plan has been prepared for illustration purposes only, in accordance with the latest RICS code of measuring and is not to scale. All measurements and areas are approximate and whilst every effort has been made to ensure the accuracy of the plan contained here, no responsibility is taken for any error, omission or misstatement.

This floorplan is for illustration purposes only and is not to scale. The position and size of doors, windows, appliances and other features are approximate.