



## CRONDACE ROAD, SW6 £475,000 SHARE OF FREEHOLD

A well presented one bedroom flat in this fantastic location in the heart of Parsons Green.

Fulham & Parsons Green | 020 7731 3388 | [fulham@winkworth.co.uk](mailto:fulham@winkworth.co.uk)

**Winkworth**

for every step...

[winkworth.co.uk](http://winkworth.co.uk)





**DESCRIPTION:**

Situated on the first floor, there is generous sized sitting room with wooden flooring which is the perfect space for entertaining. This leads onto the well-equipped eat in kitchen with excellent storage solutions. The double bedroom benefits from built in storage cupboard space and is served by a bathroom.

Cronlace Road is ideally located for the shops, bars and restaurants of the ever popular Parsons Green area. It benefits from being in close proximity to Hurlingham Park and Eel Brook common and is only a few hundred meters to Parsons Green underground station (District line). The area is well served with bus routes into Central London and beyond.

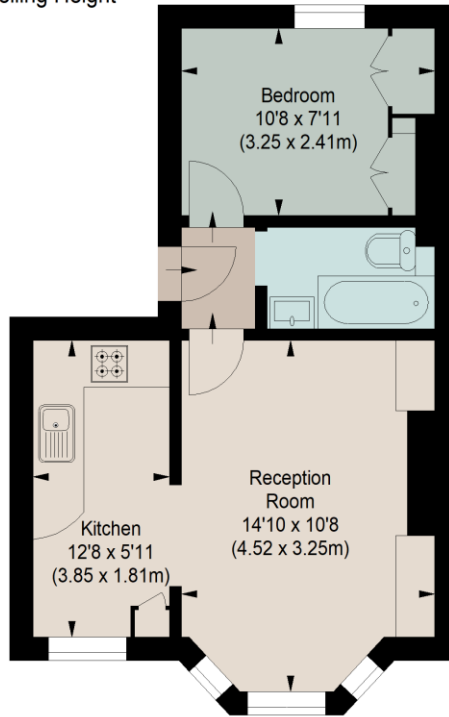
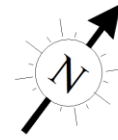




# CRONDACE ROAD, SW6

Approximate gross internal area  
364 sq ft / 33.82 sq m

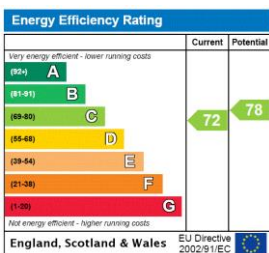
Key :  
CH - Ceiling Height



## FIRST FLOOR

The floor plan is not to scale and measurements and areas shown are approximate and therefore should be used for illustrative purposes only. The plan has been prepared in accordance with the RICS code of Measuring Practice and whilst we have confidence in the information produced, it must not be relied on. If there is any aspect of particular importance, you should carry out or commission your own inspection of the property.

This floorplan is for illustration purposes only and is not to scale. The position and size of doors, windows, appliances and other features are approximate.



**Tenure:** Share of Freehold

**Term:** n/a

**Service Charge:** ask agent

**Ground Rent:** n/a

**Council Tax Band:** D

Where no figures are shown, we have been unable to ascertain the information. All figures that are shown were correct at the time of printing.

Fulham & Parsons Green | 020 7731 3388 | fulham@winkworth.co.uk

**Winkworth**

for every step...

winkworth.co.uk

Winkworth wishes to inform prospective buyers and tenants that these particulars are a guide and act as information only. All our details are given in good faith and believed to be correct at the time of printing but they don't form part of an offer or contract. No Winkworth employee has authority to make or give any representation or warranty in relation to this property. All fixtures and fittings, whether fitted or not are deemed removable by the vendor unless stated otherwise and room sizes are measured between internal wall surfaces, including furnishings.