



STUDIO WAY, HERTFORDSHIRE, WD6

£548,500 FREEHOLD

**A MODERN THREE BEDROOM, TWO BATHROOM,
THREE STOREY FAMILY HOUSE.**

Borehamwood | 020 8953 8899 | borehamwood@winkworth.co.uk



DESCRIPTION:

Constructed approx. eight years ago by the highly regarded developers, Linden Homes is this immaculately presented three bedroom, two bathroom terrace family home on the desirable and sought after Horizon Place development.

Sold with the benefit and peace of mind an NHBC Warranty provides, the property boasts in excess of 1250 square feet of bright, spacious and flexible accommodation, which is meticulously maintained throughout and complimented by a low maintenance rear garden, integral garage and an additional allocated parking space nearby.

AT A GLANCE

- 3 Bedrooms
- Two Bathrooms
- Garage and Allocated Parking Space
- NHBC Warranty
- Guest Cloakroom
- 1251 Square Feet





Winkworth



Winkworth



Winkworth



Winkworth



Winkworth

Approximate Gross Internal Area = 116.2 sq m / 1251 sq ft

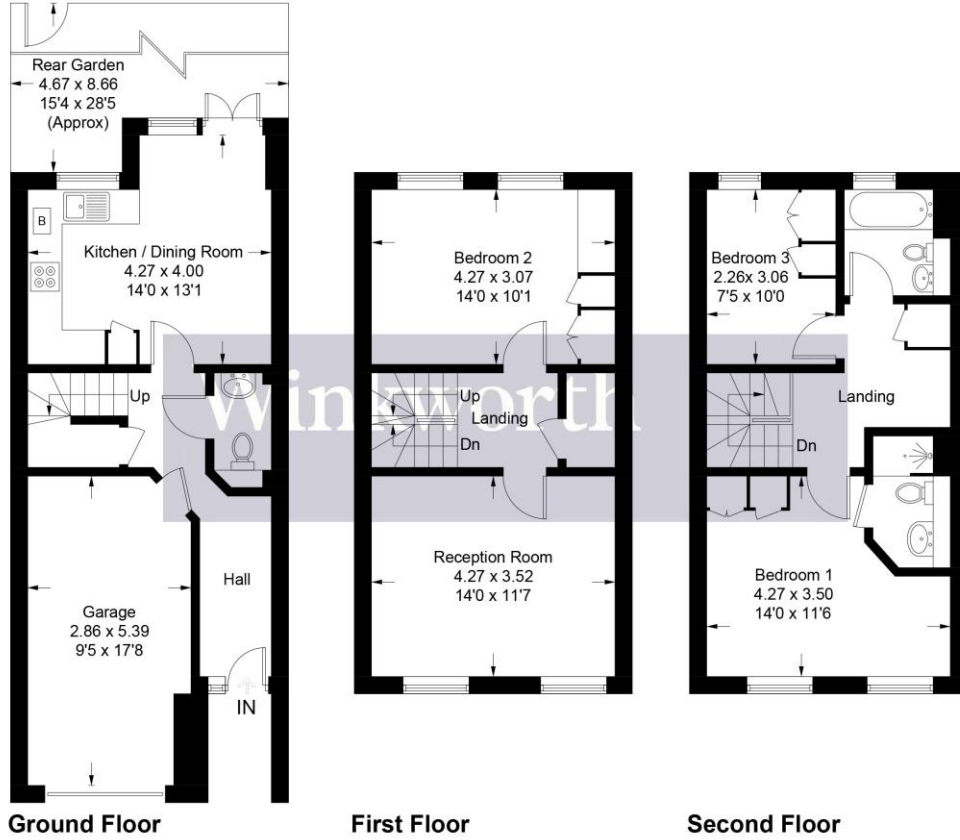
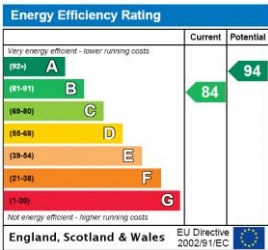


Illustration for identification purposes only, measurements are approximate, not to scale. Winkworth © 2024 (ID1037015)

This floorplan is for illustration purposes only and is not to scale. The position and size of doors, windows, appliances and other features are approximate.



- Tenure:** Freehold
- Term:** Expires -
- Service Charge:** £0 per annum
- Ground Rent:** £ 0 Annually (subject to increase)
- Council Tax Band:**

Where no figures are shown, we have been unable to ascertain the information. All figures that are shown were correct at the time of printing.