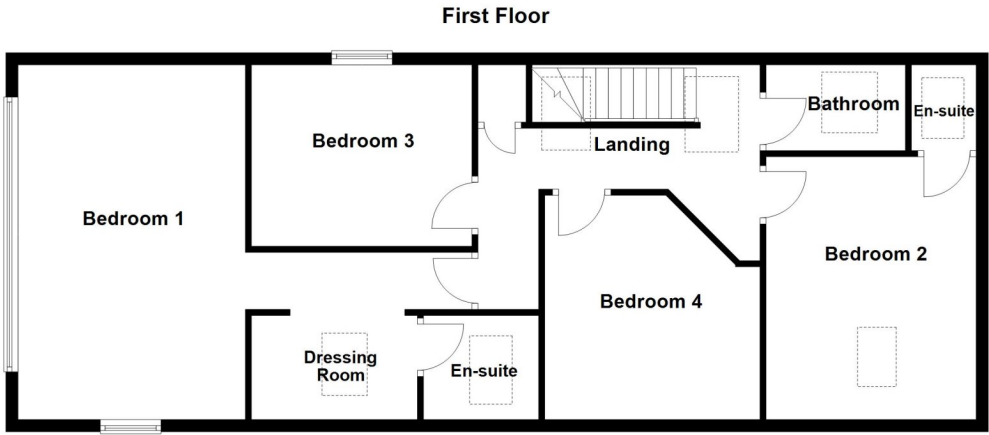
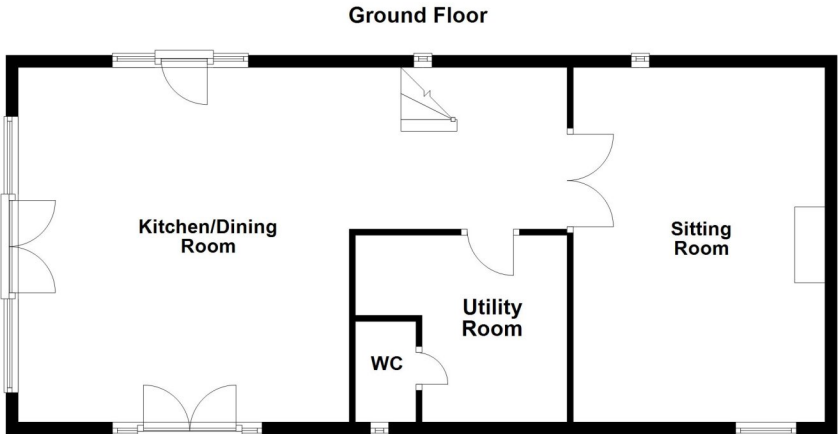


EPC TO FOLLOW



The Threshing Barn, North Street, Digby, Lincoln, Lincolnshire, LN4

£575,000 Freehold

Winkworth are thrilled to offer this stunning stone barn, which overlooks countryside views, converted to an exceptional standard in 2018. This is situated within a private development. The property offers generous, open-plan living spaces, enhanced by an array of unique, original features that have been carefully preserved and restored throughout.



Winkworth Sleaford | 01529 303377 | sleaford@winkworth.co.uk

winkworth.co.uk/sleaford

See things differently.

Under the Property Misdescriptions Act 1991 these particulars are a guide and act as information only. All details are given in good faith and are believed to be correct at time of printing. Winkworth give no representation as to their accuracy and potential purchasers or tenants must satisfy themselves or otherwise as to their correctness. No employee of Winkworth has authority to make or give any representation or warranty in relation to this property.

STUNNING STONE BARN | OVERLOOKS COUNTRYSIDE VIEWS | SITUATED WITHIN A PRIVATE DEVELOPMENT | UNDER FLOOR HEATED STONE FLAG FLOORING | CUSTOM KITCHEN CABINETRY | MARBLED GRANITE WORKTOPS



See things differently.

ACCOMMODATION

Kitchen/Living room - 29'8" x 19'2" (9.04m x 5.84m)

Sitting Room - 19'2" x 13'8" (5.84m x 4.17m)

Utility Room - 11'5" x 10'1" (3.48m x 3.07m)

Bedroom One - 18'2" x 12'3" (5.54m x 3.73m)

Dressing Room - 9' x 8'4" (2.74m x 2.54m)

Ensuite Bathroom



Ensuite Bathroom

Bedroom Two - 14'3" x 12'1" (4.34m x 3.68m)

Ensuite Bathroom

Bedroom Three - 13'1" x 9'8" (4m x 2.95m)

Bedroom Four - 12'1" x 10'11" (3.68m x 3.33m)

Bathroom - 9'6" x 6'8" (2.9m x 2.03m)