



BRIARWOOD CLOSE, KINGSBURY, LONDON, NW9
£665,000 FREEHOLD

THREE BEDROOM SEMI DETACHED FAMILY HOME

Kingsbury | 020 8204 0000 | kingsbury@winkworth.co.uk

Winkworth

for every step...

winkworth.co.uk



DESCRIPTION: This charming semi-detached house is nestled in the serene Briarwood Close in Kingsbury. With a garage and generous driveway parking, this property boasts a bright, spacious kitchen, an inviting lounge and dining area filled with natural light. The expansive rear garden is an exceptional feature, ideal for outdoor entertaining and relaxation. Additionally, there is fantastic potential for expansion to the side, rear, and loft (STPP). Upstairs, you'll find two well-proportioned double bedrooms with built-in storage and a versatile single bedroom, perfect for a nursery, guest room, or home office. This home must be seen to appreciate the impressive potential it has to offer.



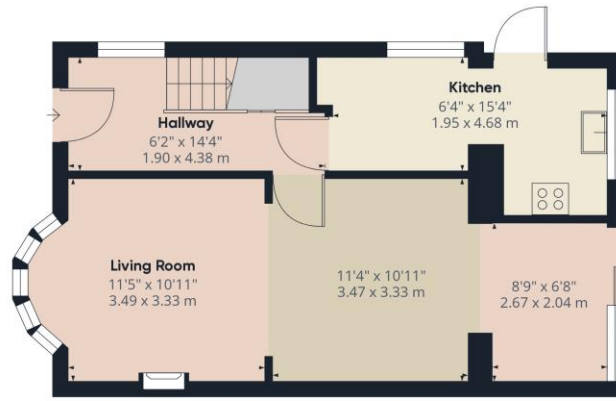
Winkworth

for every step...

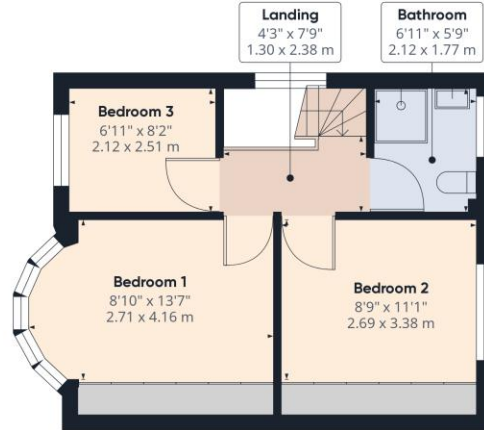


Winkworth

for every step...



Ground Floor



Floor 1

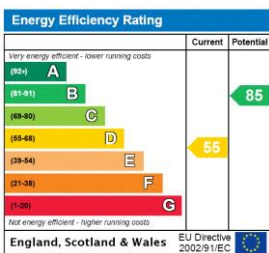
Approximate total area⁽¹⁾
 905.46 ft²
 84.12 m²

(1) Excluding balconies and terraces

While every attempt has been made to ensure accuracy, all measurements are approximate, not to scale. This floor plan is for illustrative purposes only.
 Calculations are based on RICS IPMS 3C standard.

GIRAFFE360

This floorplan is for illustration purposes only and is not to scale. The position and size of doors, windows, appliances and other features are approximate.



Tenure: Freehold

Council Tax Band: E- Brent

Where no figures are shown, we have been unable to ascertain the information. All figures that are shown were correct at the time of printing.

Kingsbury | 020 8204 0000 | kingsbury@winkworth.co.uk