



LIMES GROVE, LEWISHAM, LONDON, SE13 6DD
OIEO £325,000 SHARE OF FREEHOLD

FOUND ON THE RAISED GROUND FLOOR IS THIS BEAUTIFULLY PRESENTED ONE BEDROOM APARTMENT SPANNING 503 SQ FT. WITH HIGH CEILINGS AND PERIOD FEATURES LOCATED MOMENTS FROM LEWISHAM TOWN CENTRE, STATION & DLR, SOLD CHAIN FREE.

Blackheath | 0208 8520999 | blackheath@winkworth.co.uk

Winkworth



DESCRIPTION:

Found on the raised ground floor is this beautifully presented one bedroom apartment spanning 503 sq ft. with high ceilings and period features located moments from Lewisham Town centre, station & DLR, sold chain free.

The property briefly comprises; a large, bright and airy reception room measuring 13'5x15'2. There is a spacious double bedroom in addition to a modern family bathroom and separate kitchen. Additional benefits include sash windows, gas fire central heating and the property is also sold chain free and with a share of the freehold.

This is a beautiful apartment and viewing is a must. Virtual tours can be seen at winkworth.co.uk

Limes Grove is a fantastic location close to Lewisham train station and DLR and is walkable to Blackheath, Ladywell and Hither Green villages. Travel times to London Bridge are 7 minutes from Lewisham Station and there is access to Canary Wharf, via the DLR, London Canon Street, Charing Cross, Waterloo East and Victoria. A multitude of local shops and amenities, including Sainsbury's and Marks and Spencer's, are all within a very short walk in Lewisham town centre.

AT A GLANCE

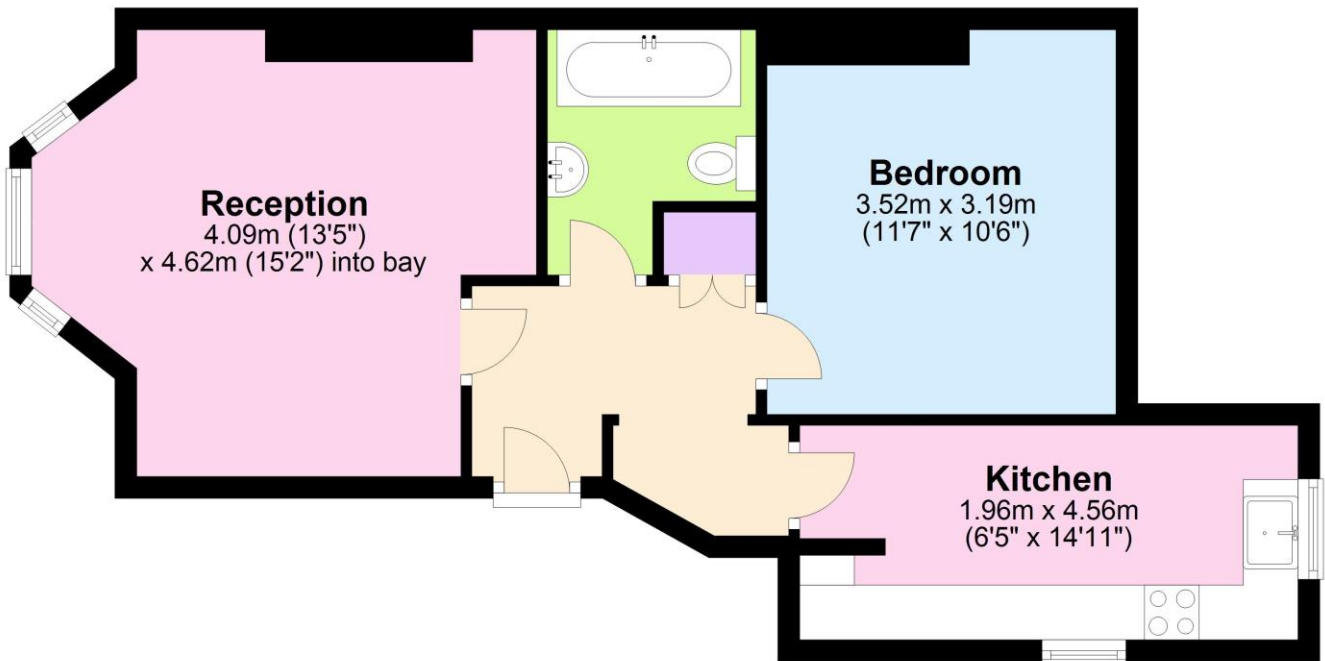
- large one bedroom apartment
- raised ground floor
- chain free
- 503 sq ft.
- moments from Lewisham Station & DLR
- close to shops





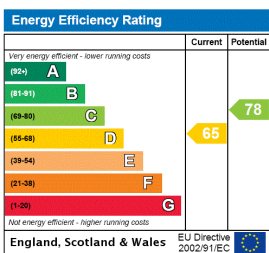
Raised Ground Floor

Approx. 46.7 sq. metres (503.2 sq. feet)



Total area: approx. 46.7 sq. metres (503.2 sq. feet)

This floorplan is for illustration purposes only and is not to scale. The position and size of doors, windows, appliances and other features are approximate. Any lease and service charge details have been provided by the vendor. Any interest party should have these checked by a solicitor as part of the purchase process.



Blackheath | 0208 8520999 | blackheath@winkworth.co.uk



winkworth.co.uk

See things differently

Winkworth wishes to inform prospective buyers and tenants that these particulars are a guide and act as information only. All our details are given in good faith and believed to be correct at the time of printing but they don't form part of an offer or contract. No Winkworth employee has authority to make or give any representation or warranty in relation to this property. All fixtures and fittings, whether fitted or not are deemed removable by the vendor unless stated otherwise and room sizes are measured between internal wall surfaces, including furnishings.