



**ECCLESBOURNE APARTMENTS, ECCLESBOURNE ROAD, ISLINGTON, LONDON, N1
£550,000 LEASEHOLD**

A STRIKING ONE BEDROOM APARTMENT IN A CONVERTED VICTORIAN SCHOOL

Islington | 0207 354 2480 | islington@winkworth.co.uk

Winkworth

winkworth.co.uk

See things differently



DESCRIPTION:

This wonderfully bright and spacious one bedroom apartment spans almost 650sqft and offers high ceilings and generous proportions throughout. An immediately impressive living room and kitchen is set in a semi open plan layout which creates a fantastic entertaining space. The double height ceiling emphasizes the proportions which are flooded in natural light through huge windows. A fully integrated kitchen offers lots of storage and benefits from stone worktops.

The double bedroom is equally as bright whilst the family sized bathroom has been fully tiled in a contemporary style. Ample storage can be found throughout the flat with two additional storage cupboards located in the hallway.

Ecclesbourne Apartments is located in a truly beautiful school conversion which is set in a peaceful secure gated development on Ecclesbourne road, a residential tree lined street located between Essex Road and De Beauvoir. The frequent buses on Southgate Road and Essex road provide direct access to the City and West End. Moreover the over ground services from Haggerston and rail services from Essex Road give easy access to Canary Wharf and the Moorgate.

The thriving restaurants, shops and deli's on Southgate Road are just around the corner. Upper Street, with its famous boutique shops, restaurants and bars, and Shoreditch with its selection of galleries, independent retailers, bars and eateries, are also nearby. For those who would prefer a relaxing stroll, the Regents Canal and New River Walk are just minutes away.

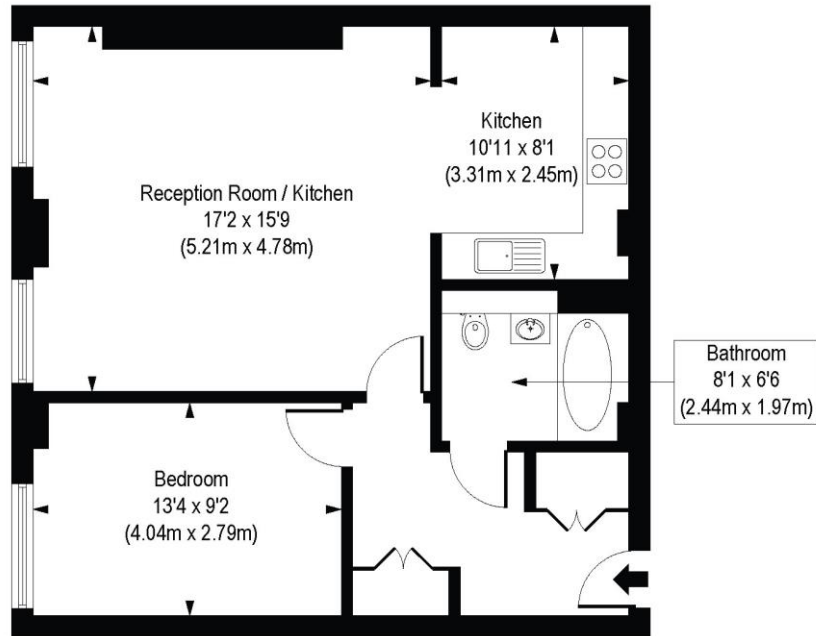
Winkworth



Winkworth

Ecclesbourne Road, N1

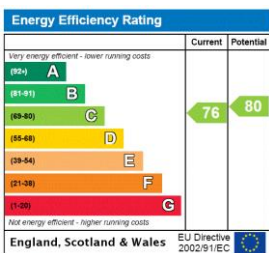
Approx. Gross Internal Floor Area 649 sq. ft / 60.29 sq. m



First Floor

COMPLIANT WITH RICS CODE OF MEASURING PRACTICE. Floorplan is for illustrative purposes only and is not to scale. Every attempt has been made to ensure the accuracy of the floorplan shown, however all measurements, fixtures, fittings and data shown are an approximate interpretation for illustrative purposes only. Liability for errors, omissions or mis-statement through negligence or otherwise is hereby excluded.

This floorplan is for illustration purposes only and is not to scale. The position and size of doors, windows, appliances and other features are approximate.



Islington | 0207 354 2480 | islington@winkworth.co.uk



winkworth.co.uk

See things differently

Winkworth wishes to inform prospective buyers and tenants that these particulars are a guide and act as information only. All our details are given in good faith and believed to be correct at the time of printing but they don't form part of an offer or contract. No Winkworth employee has authority to make or give any representation or warranty in relation to this property. All fixtures and fittings, whether fitted or not are deemed removable by the vendor unless stated otherwise and room sizes are measured between internal wall surfaces, including furnishings.