



SHERBROOKE ROAD, SW6 £625,000 SHARE OF FREEHOLD

A wonderful two bedroom garden flat offering fantastic entertaining space on this sought after residential street in Fulham.

Fulham & Parsons Green | 020 7731 3388 | fulham@winkworth.co.uk

Winkworth

for every step...

winkworth.co.uk



DESCRIPTION

This well presented flat is situated on the ground floor. The reception room, with wooden flooring, is flooded with natural light. There is a separate eat in kitchen with excellent storage solutions and doors leading out to the low maintenance, South West facing garden. The two double bedrooms both have useful built in storage and are served by a tiled bathroom.

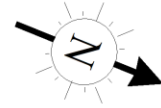
Sherbrooke Road is conveniently located for quick and easy access to the numerous independent and chain shops, bars cafes and restaurants found on nearby Fulham Road and New Kings Road. The District Line at Parsons Green is a short walk away.



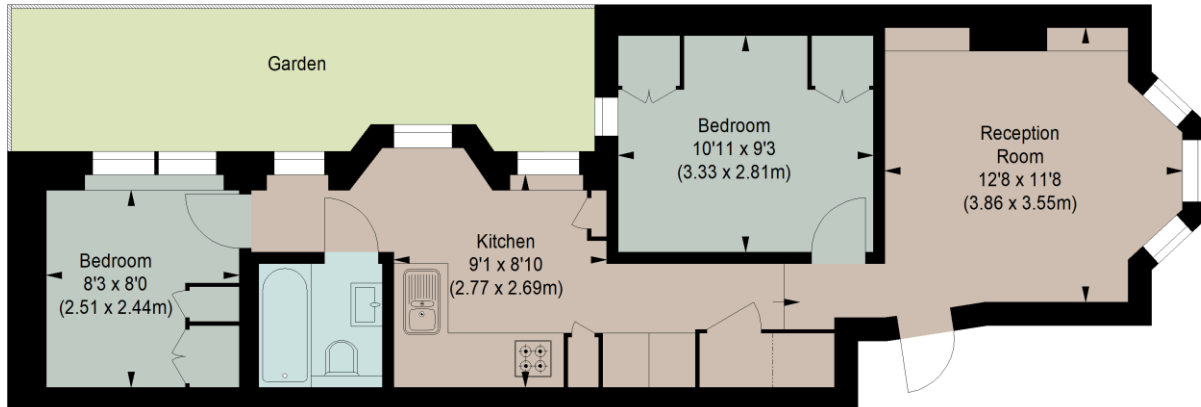


SHERBROOKE ROAD, SW6

Approximate gross internal area
510 sq ft / 47.37 sq m



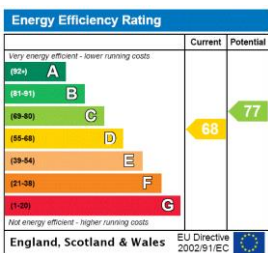
Key :
CH - Ceiling Height



GROUND FLOOR

The floor plan is not to scale and measurements and areas shown are approximate and therefore should be used for illustrative purposes only. The plan has been prepared in accordance with the RICS code of Measuring Practice and whilst we have confidence in the information produced, it must not be relied on. If there is any aspect of particular importance, you should carry out or commission your own inspection of the property.

This floorplan is for illustration purposes only and is not to scale. The position and size of doors, windows, appliances and other features are approximate.



Tenure: Share of Freehold

Term: n/a

Service Charge: n/a

Ground Rent: n/a

Council Tax Band: D

Where no figures are shown, we have been unable to ascertain the information. All figures that are shown were correct at the time of printing.

Fulham & Parsons Green | 020 7731 3388 | fulham@winkworth.co.uk

Winkworth

for every step...

winkworth.co.uk

Winkworth wishes to inform prospective buyers and tenants that these particulars are a guide and act as information only. All our details are given in good faith and believed to be correct at the time of printing but they don't form part of an offer or contract. No Winkworth employee has authority to make or give any representation or warranty in relation to this property. All fixtures and fittings, whether fitted or not are deemed removable by the vendor unless stated otherwise and room sizes are measured between internal wall surfaces, including furnishings.