



## FULHAM PARK GARDENS, SW6 £2,750 PER MONTH

A brand newly-renovated two bedroom garden flat located on a popular residential street in Parsons Green.

Fulham & Parsons Green | 020 7731 3388 | [fulham@winkworth.co.uk](mailto:fulham@winkworth.co.uk)

Tenant Fees Apply: Details of fees for tenant referencing, tenancy agreement admin fees and renewal fees are available on the Winkworth website and the link can be found with the displayed rent for the property. Tenants should ensure they are fully conversant with these upfront fees and other costs that are involved at the outset of the tenancy before making an offer to rent and your local Winkworth office will provide written details upon request.

[winkworth.co.uk](http://winkworth.co.uk)

**Winkworth**

for every step...





This wonderful apartment is set over the ground floor of a handsome Victorian terraced conversion.

To the front of the property there is a spacious sitting room which is flooded with natural light and a separate fully-fitted kitchen with space for dining. To the rear of the property are two double bedrooms which are served by a modern bathroom. There is ample storage throughout and a useful utility cupboard. There is access out onto the private, terraced garden which provides a brilliant spot for al-fresco dining.

The property would make the perfect home for either a couple or a single professional.

Fulham Park Gardens is located between the Fulham Road and the New Kings Road and benefits from its proximity to the local shops, cafes, restaurants and local amenities. The property is 0.4 miles from Putney Bridge and 0.8 miles from Parsons Green underground stations (please note these distances are approximate).

The area is well known for its excellent selection of nursery and primary schools including Pippa Pop-Ins, Fulham Prep, Parsons Green Prep and Kensington Prep.



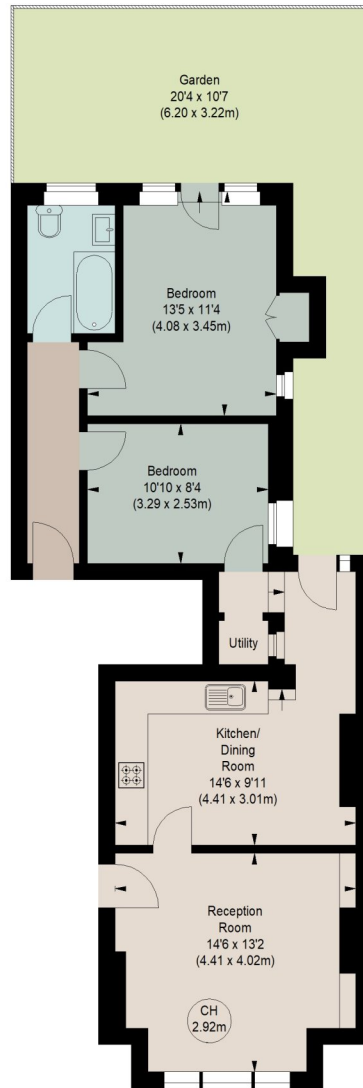




## FULHAM PARK GARDENS, SW6

Approximate gross internal area  
702 sq ft / 65.22 sq m

Key :  
CH - Ceiling Height



### GROUND FLOOR

The floor plan is not to scale and measurements and areas shown are approximate and therefore should be used for illustrative purposes only. The plan has been prepared in accordance with the RICS code of Measuring Practice and whilst we have confidence in the information produced, it must not be relied on. If there is any aspect of particular importance, you should carry out or commission your own inspection of the property.

This floorplan is for illustration purposes only and is not to scale. The position and size of doors, windows, appliances and other features are approximate.

Fulham & Parsons Green | 020 7731 3388 | fulham@winkworth.co.uk

**Winkworth**

for every step...

*winkworth.co.uk*

Winkworth wishes to inform prospective buyers and tenants that these particulars are a guide and act as information only. All our details are given in good faith and believed to be correct at the time of printing but they don't form part of an offer or contract. No Winkworth employee has authority to make or give any representation or warranty in relation to this property. All fixtures and fittings, whether fitted or not are deemed removable by the vendor unless stated otherwise and room sizes are measured between internal wall surfaces, including furnishings.