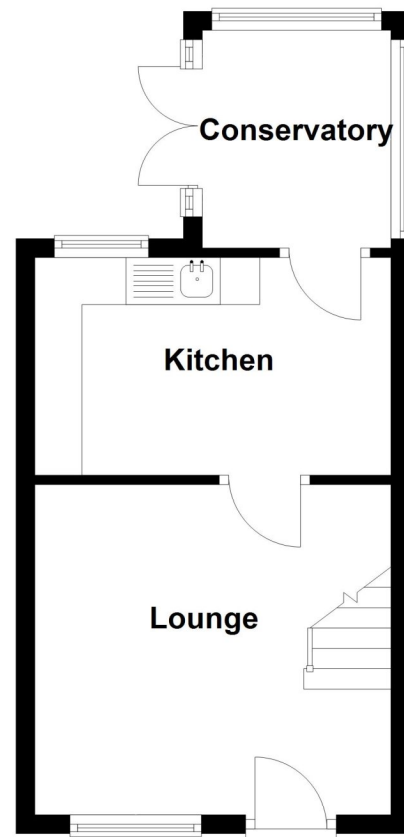


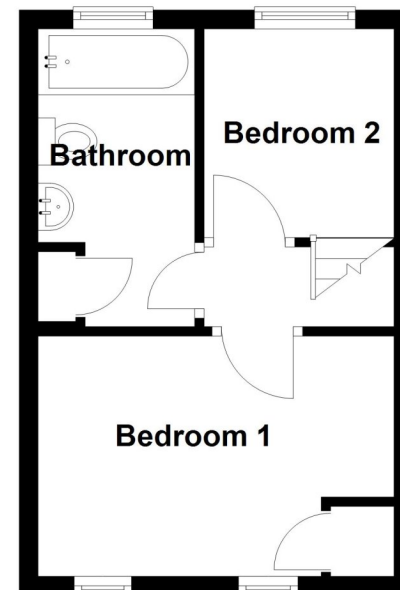
Energy Efficiency Rating		
	Current	Potential
Very energy efficient - lower running costs		
(92+) <b>A</b>		
(81-91) <b>B</b>		<b>88</b>
(69-80) <b>C</b>		
(55-68) <b>D</b>	<b>64</b>	
(39-54) <b>E</b>		
(21-38) <b>F</b>		
(1-20) <b>G</b>		
Not energy efficient - higher running costs		
England, Scotland & Wales	EU Directive 2002/91/EC	



**Ground Floor**  
Approx. 27.2 sq. metres (292.6 sq. feet)



**First Floor**  
Approx. 22.0 sq. metres (236.3 sq. feet)



Total area: approx. 49.1 sq. metres (528.9 sq. feet)



## 6 Stirling Court, Heckington, Sleaford, NG34 9QJ

£159,950 Freehold

\*NO CHAIN\* This Two Bedroom end terraced home is situated in the popular village of Heckington.

The accommodation comprises of Lounge, Kitchen, Conservatory, Two Bedrooms and a Family Bathroom.

The property also benefits from gas central heating, UPVC double glazing and is well presented throughout.

NO CHAIN | SHORT WALK TO AMENITIES | MODERN FITTED KITCHEN | LOUNGE & CONSERVATORY | TWO SPACIOUS BEDROOMS | POPULAR LOCATION | VILLAGE WITH AMENITIES | UPVC DOUBLE GLAZING | GAS CENTRAL HEATING | IDEAL FOR FIRST TIME BUYERS & INVESTORS

Winkworth Sleaford | 01529 303377 | sleaford@winkworth.co.uk

[winkworth.co.uk/sleaford](http://winkworth.co.uk/sleaford)



See things differently.

Under the Property Misdescriptions Act 1991 these particulars are a guide and act as information only. All details are given in good faith and are believed to be correct at time of printing. Winkworth give no representation as to their accuracy and potential purchasers or tenants must satisfy themselves or otherwise as to their correctness. No employee of Winkworth has authority to make or give any representation or warranty in relation to this property.



See things differently.



**ACCOMMODATION**

Entrance Hall

Living Room - 12'5" x 11'6" (3.78m x 3.5m)

Kitchen - 12'5" x 7'7" (3.78m x 2.3m)

Conservatory - 7'7" x 6'7" (2.3m x 2m)

Bedroom One - 12'4" x 8'5" (3.76m x 2.57m)

Bedroom Two - 7'3" x 6'7" (2.2m x 2m)

Family Bathroom - 10'4" x 5'5" (3.15m x 1.65m)

**LOCAL AUTHORITY**

North Kesteven District Council

**TENURE**

Freehold

**COUNCIL TAX BAND**

A

