



ADAMS AVENUE, NORTHAMPTON, NORTHAMPTONSHIRE, NN1
£250,000 FREEHOLD





ADAMS AVENUE, NORTHAMPTON, NORTHAMPTONSHIRE, NN1

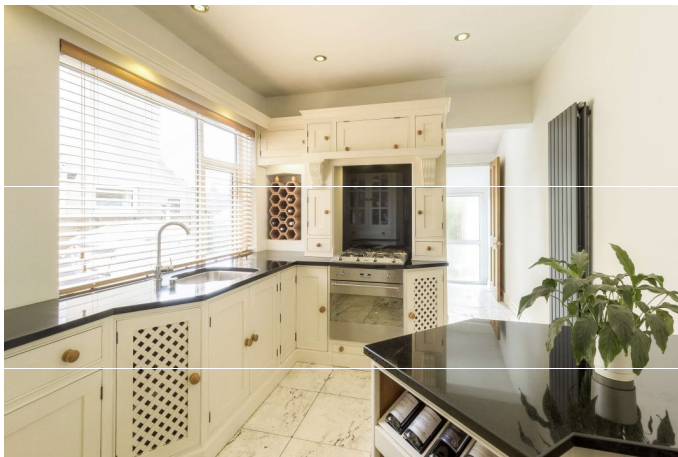
Situated in the tree lined Avenue, is this three bedroom bay fronted Victorian home, which is offered for sale with NO ONWARD CHAIN.

The accommodation briefly comprises, Entrance Hall, Open plan, bay fronted Lounge/dining room. Hand crafted kitchen with granite work tops and marble flooring, separate utility room and cloakroom. The garden is west facing.

To the first floor there are two double bedrooms and a nursery/study third room. The master bedroom is situated to the front of the property. The shower room has been modernised to incorporate a large walk in shower, low flush WC and pedestal wash hand basin.

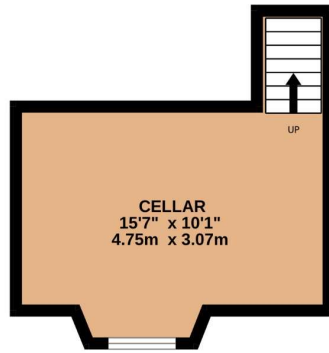
Externally to the rear, there is a West facing rear garden. The garden has matured with a delightful range of shrubs and trees. At the rear of the garden is an area of hardstanding.

The property is located close to Abington Park. Abington Park is Northampton's oldest and most popular park. It contains many fine features including Abington Park Museum, sports facilities, a cafe, flower displays, lakes, and a garden for the blind. Beneath the surface lies the archaeological remains of the old medieval village. There are many varieties of shops, restaurants and cafes along the popular Wellingborough Road.

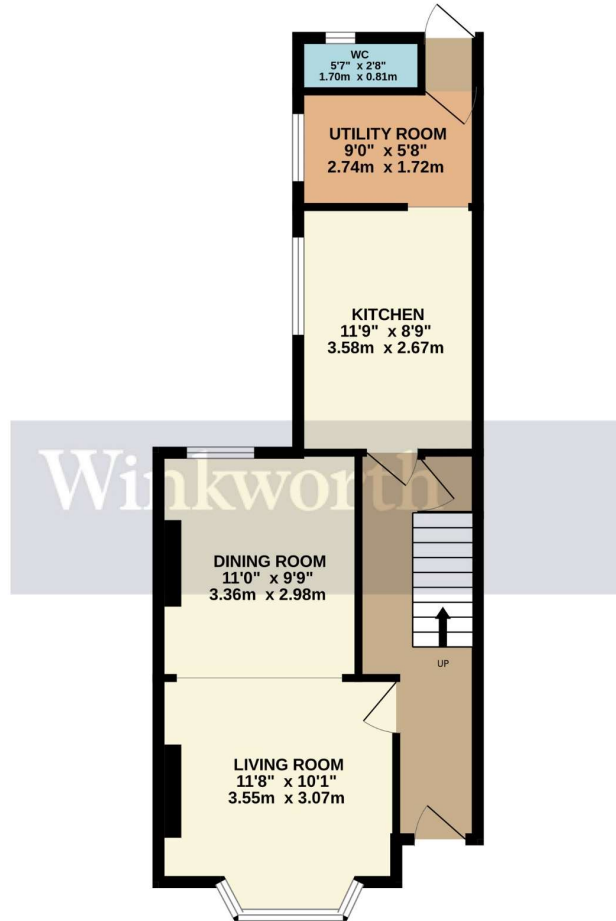




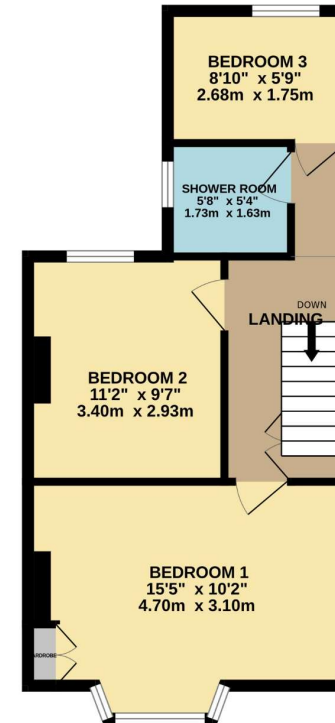
BASEMENT
178 sq.ft. (16.6 sq.m.) approx.



GROUND FLOOR
500 sq.ft. (46.5 sq.m.) approx.



1ST FLOOR
437 sq.ft. (40.6 sq.m.) approx.



TOTAL FLOOR AREA: 1116 sq.ft. (103.7 sq.m.) approx.

Whilst every attempt has been made to ensure the accuracy of the floorplan contained here, measurements of doors, windows, rooms and any other items are approximate and no responsibility is taken for any error, omission or mis-statement. This plan is for illustrative purposes only and should be used as such by any prospective purchaser. The services, systems and appliances shown have not been tested and no guarantee as to their operability or efficiency can be given.
Made with Metropix ©2023

Northampton | 01604 204455 | northampton@winkworth.co.uk

winkworth.co.uk

Winkworth wishes to inform prospective buyers and tenants that these particulars are a guide and act as information only. All our details are given in good faith and believed to be correct at the time of printing but they don't form part of an offer or contract. No Winkworth employee has authority to make or give any representation or warranty in relation to this property. All fixtures and fittings, whether fitted or not are deemed removable by the vendor unless stated otherwise and room sizes are measured between internal wall surfaces, including furnishings.

