



## LAMBTON PLACE, W11

£695,000 LEASEHOLD (112 YEARS REMAINING)

**A PERFECTLY PROPORTIONED, BRIGHT AND CHARMING, ONE BEDROOM FLAT TUCKED AWAY IN THIS QUITE MEWS, JUST OFF WESTBOURNE GROVE**

**1 Bedroom, 1 Reception Room, 1 Bathroom, Flat/Apartment, Period, 490 Approx Sq Ft, Service Charge £1,200 p/a, Ground Rent £50 p/a**

**Winkworth**

Notting Hill Sales | 0207 727 3227 | nottinghill@winkworth.co.uk

[winkworth.co.uk](http://winkworth.co.uk)

for every step...



### **DESCRIPTION:**

This charming, bright and spacious one bedroom flat is located on the second floor of this lovely period building just off Westbourne Grove. Presented in excellent condition the stylish flat comprises, entrance hall, reception room, separate kitchen, large bedroom and bathroom. The perfect pied-a-terre, located in the heart of Notting Hill.

### **LOCATION:**

Lambton Place is a quiet and sought after mews, in the heart of Notting Hill, just off Westbourne Grove, and opposite Daylesford Organic it is conveniently located for all of the local shops, boutiques and restaurants on offer along Westbourne Grove and around Portobello Road.

### **LOCAL AUTHORITY AND COUNCIL TAX BAND:**

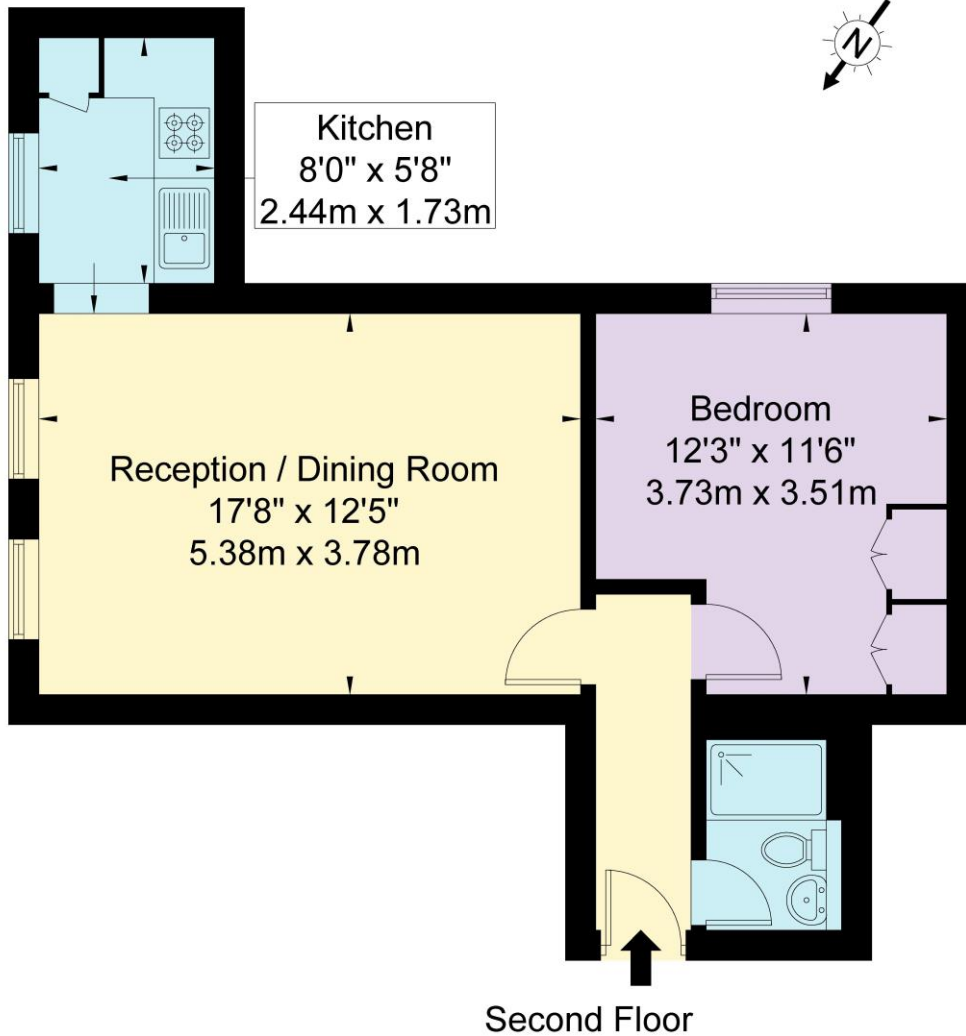
Royal Borough of Kensington and Chelsea (Band E)





# Lambton Place W11 2SH

Approx Gross Internal Area = 45.5 sq m / 490 sq ft

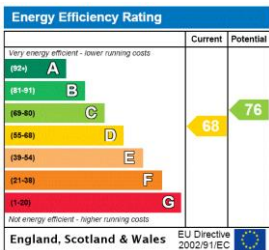


Ref

Copyright **BLEU PLAN**

The Floor plan is not to scale and measurements and areas shown are approximate and therefore should be used for illustrative purposes only. The plan has been prepared in accordance with the RICS code of Measuring Practice and whilst we have confidence in the information produced it must not be relied on. If there is any aspect of particular importance, you should carry out or commission your own inspection of the property.  
Copyright @ BLEUPLAN

This floorplan is for illustration purposes only and is not to scale. The position and size of doors, windows, appliances and other features are approximate.



Notting Hill Sales | 0207 727 3227 | nottinghill@winkworth.co.uk



winkworth.co.uk

for every step...

winkworth wishes to inform prospective buyers and tenants that these particulars are a guide and act as information only. All our details are given in good faith and believed to be correct at the time of printing but they don't form part of an offer or contract. No Winkworth employee has authority to make or give any representation or warranty in relation to this property. All fixtures and fittings, whether fitted or not are deemed removable by the vendor unless stated otherwise and room sizes are measured between internal wall surfaces, including furnishings.