



ST. BENEDICTS CLOSE, SW17
£375,000 LEASEHOLD

A TWO BEDROOM SECOND FLOOR FLAT IN A PURPOSE-BUILT BLOCK.

Tooting | 020 8767 5221 | tooting@winkworth.co.uk

Winkworth

for every step...

winkworth.co.uk



DESCRIPTION:

This is a two-bedroom flat situated on the second floor of a purpose-built block. The property consists of two bedrooms, a reception room with direct access to the kitchen, and a bathroom. Please note that the flat may require cosmetic updating.

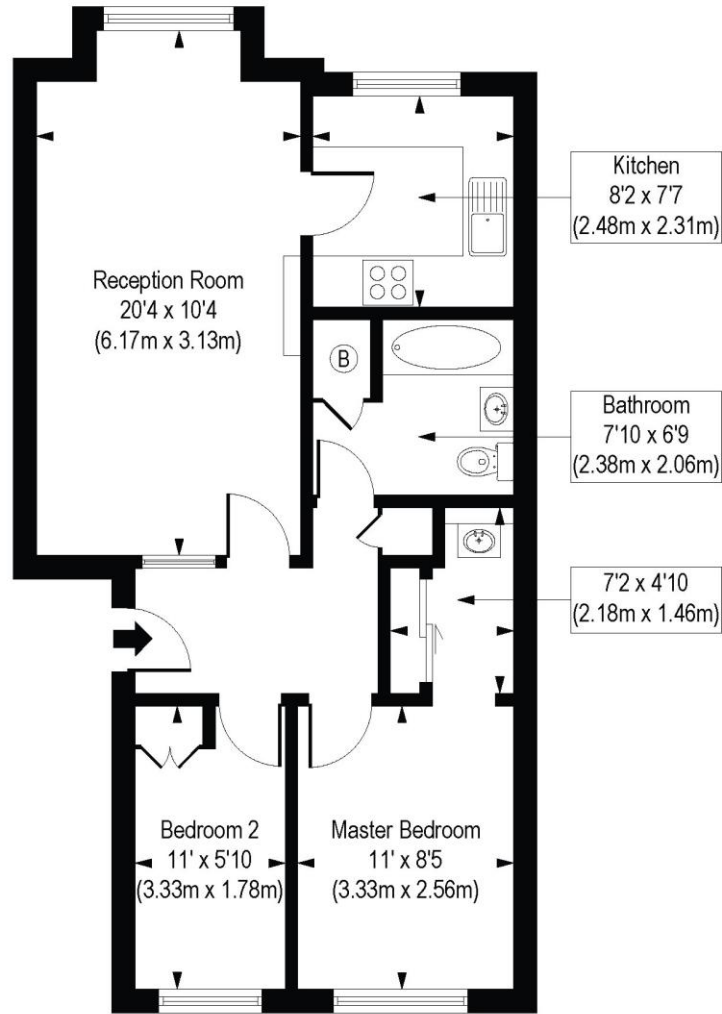
This property is situated within a private estate located just off Church Lane. It is within a walking distance of Tooting Broadway tube station (0.6miles), Tooting Common (0.9 miles), and a wide variety of local shops, bars, and restaurants.

Wandsworth Council Tax Band: C



St. Benedicts Close, SW17

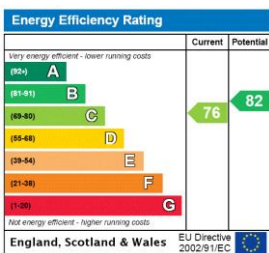
Approx. Gross Internal Floor Area 592 sq. ft / 55.02 sq. m



Second Floor

COMPLIANT WITH RICS CODE OF MEASURING PRACTICE. Floorplan is for illustrative purposes only and is not to scale. Every attempt has been made to ensure the accuracy of the floorplan shown, however all measurements, fixtures, fittings and data shown are an approximate interpretation for illustrative purposes only. Liability for errors, omissions or mis-statement through negligence or otherwise is hereby excluded.

This floorplan is for illustration purposes only and is not to scale. The position and size of doors, windows, appliances and other features are approximate.



Tooting | 020 8767 5221 | tooting@winkworth.co.uk

for every step...

winkworth.co.uk

Winkworth wishes to inform prospective buyers and tenants that these particulars are a guide and act as information only. All our details are given in good faith and believed to be correct at the time of printing but they don't form part of an offer or contract. No Winkworth employee has authority to make or give any representation or warranty in relation to this property. All fixtures and fittings, whether fitted or not are deemed removable by the vendor unless stated otherwise and room sizes are measured between internal wall surfaces, including furnishings.