



**WATERFORD HOUSE, LONDON, W11
£650 PER WEEK UNFURNISHED**

A VERY SPACIOUS AND BRIGHT TWO DOUBLE BEDROOM FLAT LOCATED ON THE THIRD FLOOR (WITH LIFT) OF THIS IMMACULATE MODERN BUILDING LOCATED IN THE HEART OF NOTTING HILL AND A SHORT WALK FROM THE TUBE.

Notting Hill Lettings | 0207 727 3227 | nottinghill@winkworth.co.uk



for every step...

winkworth.co.uk



DESCRIPTION:

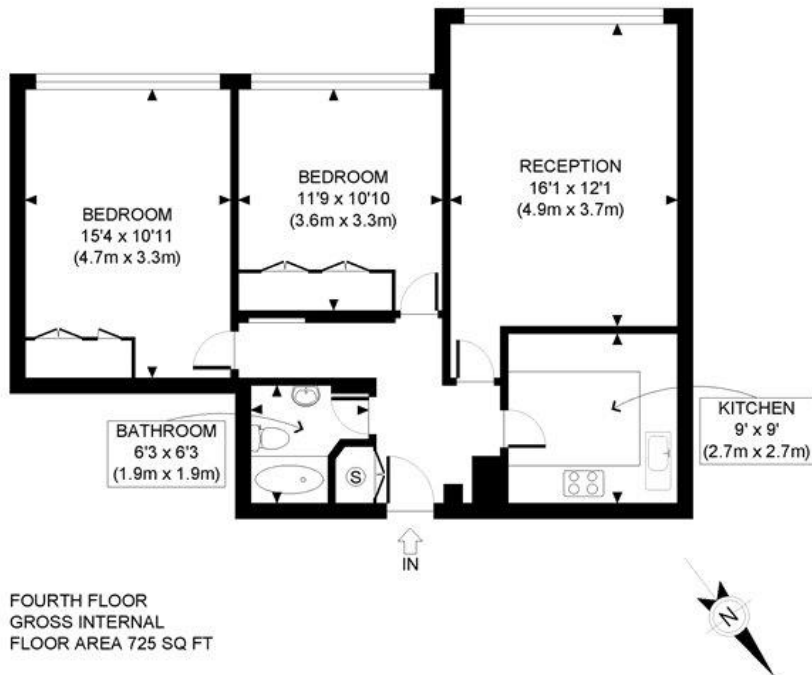
A very spacious and bright two double bedroom flat located on the third floor (with lift) of this immaculate modern building located in the heart of Notting Hill and a short walk from the tube. The lateral property comprises fully fitted semi-open plan kitchen, a large living room which is south facing with an attractive view, one bathroom and two double bedrooms both with plenty of storage. The flat also benefits from wooden floors throughout and is available unfurnished.





LOCATION:

Kensington Park Road is a grand residential avenue that provides very easy access to all the shops, restaurants and transport links at Notting Hill Gate being only a short walk (Central, Circle & District lines). There is also a fine selection of schools in the area including Wetherby, Pembridge Hall, and Notting Hill Prep. The wonderful open space of Kensington Gardens is a short stroll.



APPROX. GROSS INTERNAL FLOOR AREA: 725 SQ FT/ 67 SQM

Winkworth

This plan is for illustrative purposes only and should be used as such by any prospective client. Whilst every attempt has been made to ensure the accuracy of the Floor Plan contained here, measurements of the doors, windows, rooms and any other items are approximate and no responsibility is taken for any errors, omissions, or misstatement. The services, systems and appliances shown have not been tested and no guarantee as to the operability or efficiency can be given.

PROPERTY PHOTO PLANS.com

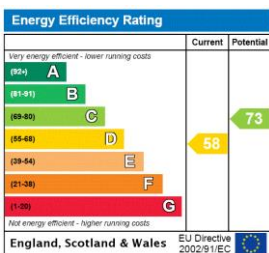
This floorplan is for illustration purposes only and is not to scale. The position and size of doors, windows, appliances and other features are approximate.

Deposit: £0.00

Holding Deposit:

Council Tax Band:

Where no figures are shown, we have been unable to ascertain the information. All figures that are shown were correct at the time of printing.



Notting Hill Lettings | 0207 727 3227 | nottinghill@winkworth.co.uk

Winkworth

for every step...

winkworth.co.uk

Winkworth wishes to inform prospective buyers and tenants that these particulars are a guide and act as information only. All our details are given in good faith and believed to be correct at the time of printing but they don't form part of an offer or contract. No Winkworth employee has authority to make or give any representation or warranty in relation to this property. All fixtures and fittings, whether fitted or not are deemed removable by the vendor unless stated otherwise and room sizes are measured between internal wall surfaces, including furnishings.