



**NORTHOLME GARDENS, EDGWARE, MIDDLESEX, HA8
OFFERS IN EXCESS OF £570,000 FREEHOLD**

DELIGHTFUL THREE BEDROOM END OF TERRACE HOME

Kingsbury | 020 8204 0000 | kingsbury@winkworth.co.uk

Winkworth

for every step...

winkworth.co.uk



Nestled away just off the Edgware Road, this delightful three-bedroom end of terrace house combines comfort with convenience, making it an ideal family home. The spacious reception room welcomes you with French doors that open out to the gorgeous greenery of the lovely garden, providing a perfect setting for relaxation and outdoor entertaining. The kitchen, designed in a neutral palette, offers ample space for culinary endeavours, whilst a W/C enhances the ground floor's functionality. Upstairs, the property boasts two generous double bedrooms, one of which features an en suite, as well as a cozy single bedroom and a well-appointed family bathroom. The property benefits from off-street parking for two cars to the side, adding to the convenience. There is also scope for extension (STPP). Located a short distance from Edgware town centre, you'll find an array of shopping, educational, and recreational facilities, as well as excellent transport links, including the Northern Line, making commuting a breeze. This property is a perfect blend of style, comfort, and convenience, ready to welcome its new owners. An internal viewing is a must.

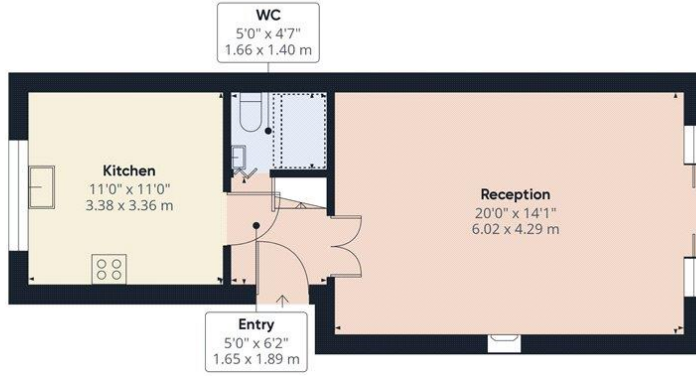


for every step...

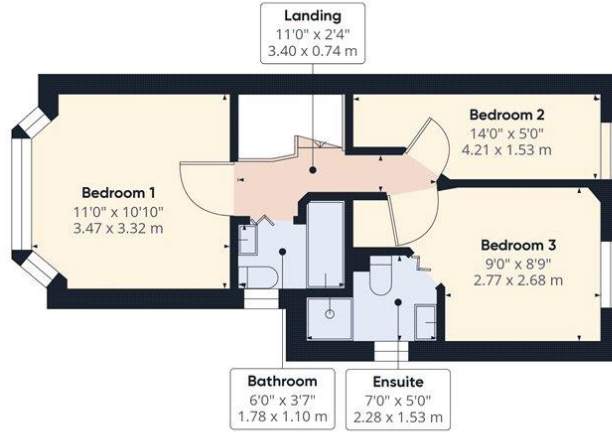


Winkworth

for every step...



Ground Floor



Floor 1

Approximate total area⁽¹⁾
 830.87 ft²
 77.19 m²

Reduced headroom
 13.13 ft²
 1.22 m²

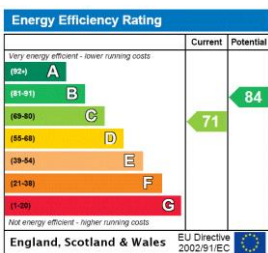
(1) Excluding balconies and terraces

☒ Reduced headroom
 (below 1.5m/4.92ft)

While every attempt has been made to ensure accuracy, all measurements are approximate, not to scale. This floor plan is for illustrative purposes only.

GIRAFFE360

This floorplan is for illustration purposes only and is not to scale. The position and size of doors, windows, appliances and other features are approximate.



Tenure: Freehold

Council Tax Band: E - Harrow

Where no figures are shown, we have been unable to ascertain the information. All figures that are shown were correct at the time of printing.

Kingsbury | 020 8204 0000 | kingsbury@winkworth.co.uk



for every step...

winkworth.co.uk

Winkworth wishes to inform prospective buyers and tenants that these particulars are a guide and act as information only. All our details are given in good faith and believed to be correct at the time of printing but they don't form part of an offer or contract. No Winkworth employee has authority to make or give any representation or warranty in relation to this property. All fixtures and fittings, whether fitted or not are deemed removable by the vendor unless stated otherwise and room sizes are measured between internal wall surfaces, including furnishings.