



PAVILION APARTMENTS, NW8 £1,795,000 PRINCIPAL AGENT Subject to contract

We are delighted to have been instructed to sell this lovely three bedroom, fourth floor apartment, set in one of the most sought-after buildings in the heart of St John's Wood. The apartment consists of three double bedrooms, one en suite bathroom and a family bathroom as well as a separate WC. The flat also benefits from a balcony/terrace directly facing the well-kept communal garden, 24/7 porters, passenger lift and a secure underground parking space. Pavilion Apartments is located directly opposite the iconic Lord's Cricket Ground which is a must for every Cricket lover and is in close proximity to St John's Wood Underground Station (Jubilee line) and St John's Wood High Street located 0.4 miles away.

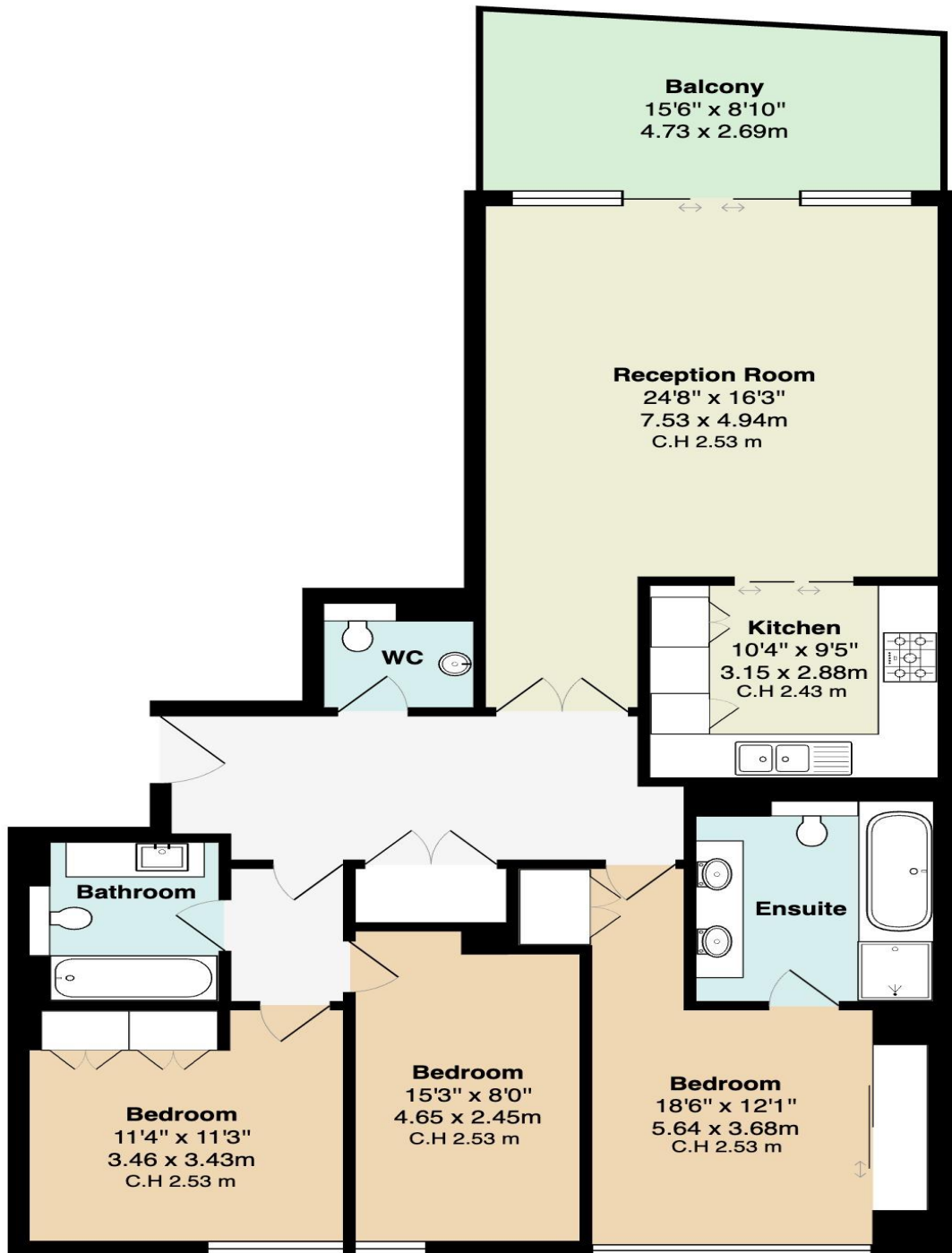
Three Double Bedrooms | One En Suite Bathroom | Family Bathroom | WC | Reception Room
| Kitchen | Balcony | Lift Access | Communal Gardens | 24 Concierge | Share of Freehold |
Underground Parking Space

winkworth.co.uk/st-johns-wood

Winkworth

For every step...





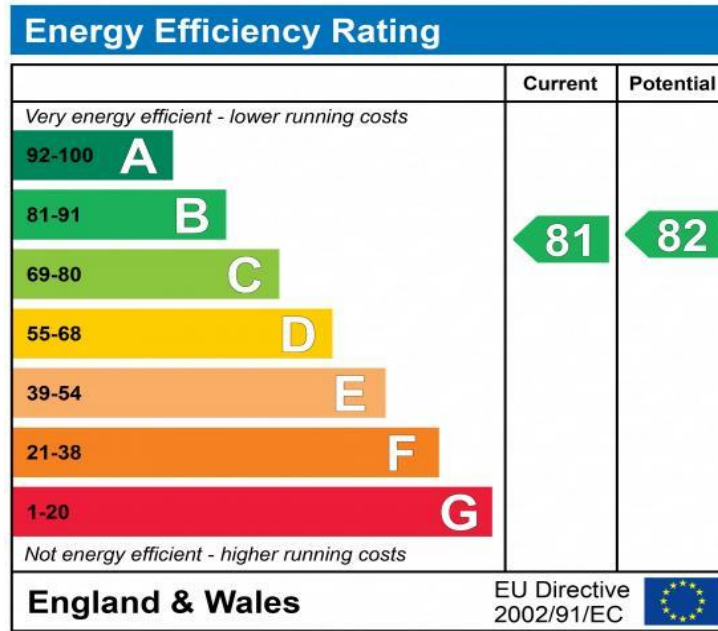
4th Floor

Pavilion Apartments, St Johns Wood NW8

Total Gross Area: 1237 ft² ... 114.9 m²

*C.H - Ceiling Height

Floor plans are for identification and guideline purposes only, not to scale
Compliant RICS code of measuring practice



Tenure: Share of Freehold

Term: 999 years from 01/01/2000

Service Charge: £14,089.00 Per Annum

Current Ground Rent: £700.00 Annually
(Subject to increase)

NOTES:

Where no figures are shown, we have been unable to ascertain the information. All figures that are shown were correct at the time of printing.

NB: These particulars are not an offer or contract, nor part of one. You should not rely on statements by Winkworth in the particulars or by word of mouth or in writing "information" as being factually accurate about the property, its condition or its value. Neither Winkworth nor any joint agent has any authority to make any representations about the property, and accordingly any information given is entirely without responsibility on the part of the agents, seller(s) or lessor(s). These particulars are prepared on the basis of the information supplied by our client and are a rough guide for information only. The photographs show only certain parts of the property. We are not able to check all of the information and therefore are unable to guarantee accuracy. All interested parties are therefore advised to undertake all necessary inspections and checks that they deem appropriate. Where displayed, the square footage is taken from the floor plans, which are created by an independent supplier. These measurements are approximate and included for illustrative purposes only. The measurements may vary. Winkworth does not make any representation as to the accuracy of these measurements and you should seek to verify them for yourself. Winkworth accept no liability for any loss you may suffer if you rely on these measurements. All fixtures and fittings, whether fitted or not are deemed removable by the vendor unless stated. Any reference to alterations to, or use of, any part of the property does not mean that any necessary planning, building regulations or other consent has been obtained. Amenities and appliances have not been tested.

St John's Wood | 103-104 St John's Wood Terrace, London NW8 6PL
020 7586 7001 | stjohnswood@winkworth.co.uk

