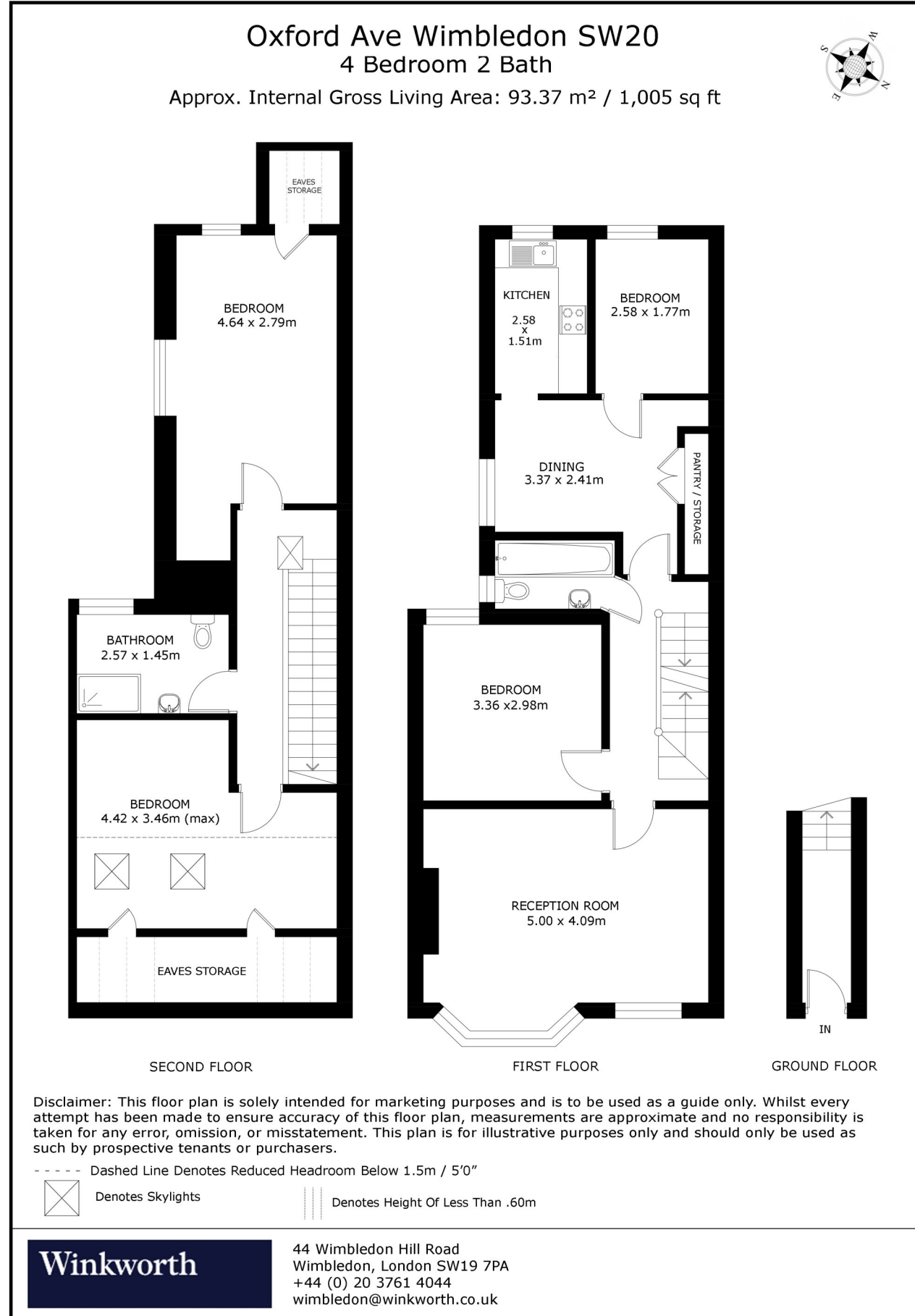


Oxford Avenue, London

This floorplan is for illustration purposes only and is not to scale. The position and size of doors, windows, appliances and other features are approximate.



Oxford Avenue, London, SW20

Offers Over £585,000 Share of Freehold

Winkworth Wimbledon are pleased to present this bright and spacious duplex four bedroom apartment in a sought after area in Wimbledon and in catchment for Wimbledon Chase Primary School (OFSTED outstanding).

- 4 Bedrooms | Sought After Location
- Duplex Apartment | 2 Bathrooms



DESCRIPTION

Winkworth Wimbledon are pleased to present this bright and spacious duplex four bedroom apartment in a sought after area in Wimbledon and in catchment for Wimbledon Chase Primary School (OFSTED outstanding).

This fantastic Property comprises a modern kitchen, spacious reception room, separate dining room, 2 bedrooms (one double, one single) and a family bathroom on the first floor.

On the second floor, there are 2 further double bedrooms along with the second bathroom. The loft has recently been converted by the current owner so the entire top floor of this apartment is new.

The Property is conveniently located close to the shops and amenities of Wimbledon Chase and is less than 5 minutes via train from Wimbledon Main Line and Underground Stations.

EPC Rating C
Council Tax Band C

