



CYRIL STREET, NORTHAMPTONSHIRE, NN1
£200,000 FREEHOLD



CYRIL STREET, NORTHAMPTONSHIRE, NN1

Offered for sale with full vacant possession is this two bedroom terrace Victorian home, located within proximity of Northampton General Hospital. The property which requires some updating, benefits from having a converted basement, uPVC double glazing and Gas fired central heating. The accommodation briefly comprises, Entrance Hall, open plan lounge/dining room, kitchen with utility room off. The basement which has been converted has a radiator, recessed spotlights, and window. To the first floor there are two bedrooms and a large bathroom.

The rear garden is low maintenance with a mixture of hardstanding and artificial grass.

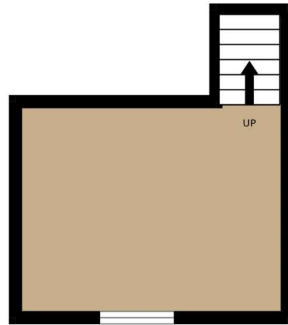
Council Tax Band 'A'

EPC Rating ' D'

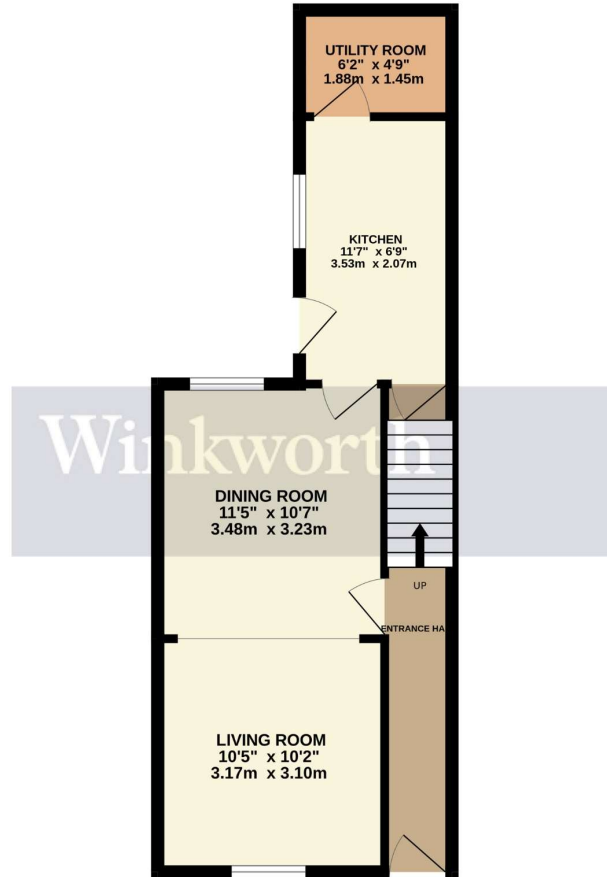




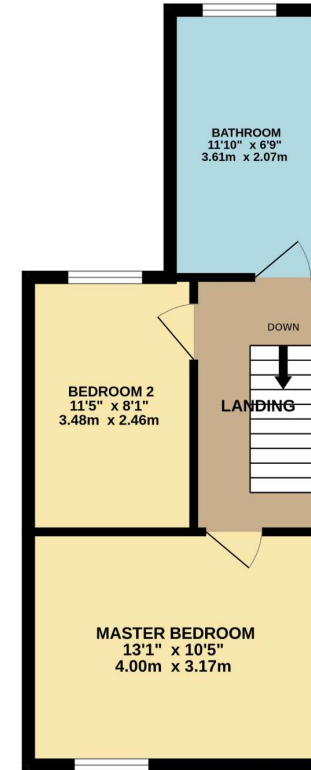
BASEMENT
130 sq.ft. (12.1 sq.m.) approx.



GROUND FLOOR
399 sq.ft. (37.1 sq.m.) approx.



1ST FLOOR
367 sq.ft. (34.1 sq.m.) approx.



TOTAL FLOOR AREA: 896 sq.ft. (83.2 sq.m.) approx.

Whilst every attempt has been made to ensure the accuracy of the floorplan contained here, measurements of doors, windows, rooms and any other items are approximate and no responsibility is taken for any error, omission or mis-statement. This plan is for illustrative purposes only and should be used as such by any prospective purchaser. The services, systems and appliances shown have not been tested and no guarantee as to their operability or efficiency can be given.
Made with Metropix ©2023

Energy Efficiency Rating		Current	Potential
Very energy efficient - lower running costs			
(92-)	A		
(81-91)	B		84
(69-80)	C		
(55-68)	D	62	
(39-54)	E		
(21-38)	F		
(1-20)	G		
Not energy efficient - higher running costs			
England, Scotland & Wales		EU Directive 2002/91/EC	

Northampton | 01604 204455 | northampton@winkworth.co.uk

winkworth.co.uk

Winkworth wishes to inform prospective buyers and tenants that these particulars are a guide and act as information only. All our details are given in good faith and believed to be correct at the time of printing but they don't form part of an offer or contract. No Winkworth employee has authority to make or give any representation or warranty in relation to this property. All fixtures and fittings, whether fitted or not are deemed removable by the vendor unless stated otherwise and room sizes are measured between internal wall surfaces, including furnishings.

