



JACK FREEDMAN HOUSE, COVERDALE ROAD, LONDON, NW2  
**£745,000 LEASEHOLD**

**A FANTASTIC OPPORTUNITY TO PURCHASE A STUNNING  
FLAT IN THIS PRIME NEW DEVELOPMENT ON COVERDALE  
ROAD IN BRONDESBURY PARK.**

Kensal Rise & Queens Park | 0208 960 4947 | [kensalrise@winkworth.co.uk](mailto:kensalrise@winkworth.co.uk)

**Winkworth**



## LOCATION:

The Royal Majestic Apartments have the best of both worlds: easy accessibility to central London and a plethora of local amenities, cultural spots and green parks to explore. Transport links are excellent to be within easy reach of central London and the City. Willesden Green or Kilburn are the nearest stations for the Jubilee Line.



**Winkworth**



## DESCRIPTION:

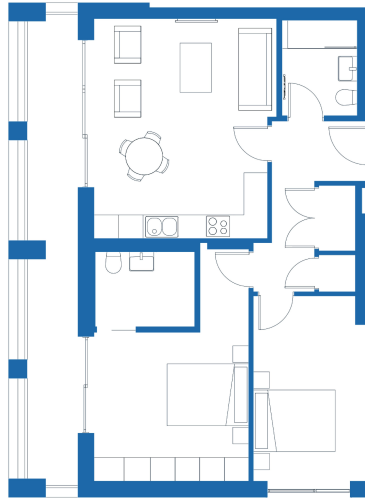
The Royal Majestic Apartments, a collection of 16 stylish one, two and three bedroom properties, brought to you by Gage Properties. This one in particular is a lovely 2 bedroom, 2 bathroom flat, located on the 2nd floor. The interiors have been individually designed by boutique agency ADEMCHIC, with real oak-engineered floors throughout, integrated lighting and bespoke joinery ensuring each flat is turnkey ready. You will find beautifully designed spaces – some designated for quiet, peaceful moments and others for socialising and entertaining guests.

**Winkworth**



# FLAT 13

SECOND FLOOR  
2 BEDROOM



**GROSS INTERNAL AREA**  
75 sqm / 807 sqft

**KITCHEN / LIVING**  
4.4m x 5.4m / 14.3ft x 17.6ft  
**BEDROOM 1**  
3.8m x 3.6m / 12.4ft x 11.9ft  
**ENSUITE**  
1.8m x 2.4m / 6.0ft x 8.0ft  
**BEDROOM 2**  
2.9m x 4.6m / 9.3ft x 15.0ft

**BATHROOM**  
2.3m x 2.1m / 7.7ft x 6.8ft  
**TERRACE / BALCONY**  
11.4m x 1.2m / 37.4ft x 3.9ft



This floorplan is for illustration purposes only and is not to scale. The position and size of doors, windows, appliances and other features are approximate.

Kensal Rise & Queens Park | 0208 960 4947 | kensalrise@winkworth.co.uk

**Winkworth**

[winkworth.co.uk](http://winkworth.co.uk)

See things differently

winkworth wishes to inform prospective buyers and tenants that these particulars are a guide and act as information only. All our details are given in good faith and believed to be correct at the time of printing but they don't form part of an offer or contract. No Winkworth employee has authority to make or give any representation or warranty in relation to this property. All fixtures and fittings, whether fitted or not are deemed removable by the vendor unless stated otherwise and room sizes are measured between internal wall surfaces, including furnishings.