



Ebury Bridge Road, UK, SW1W

£1,600 PER MONTH

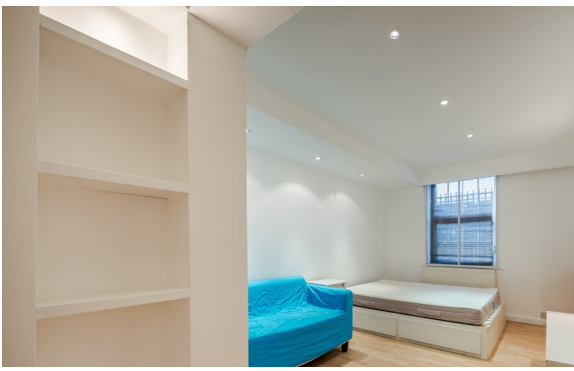
FURNISHED

AT A GLANCE

- Studio Apartment
- Open-Plan Kitchen
- Good Storage
- Excellent Location
- Council Tax Band: A

Winkworth

for every step...

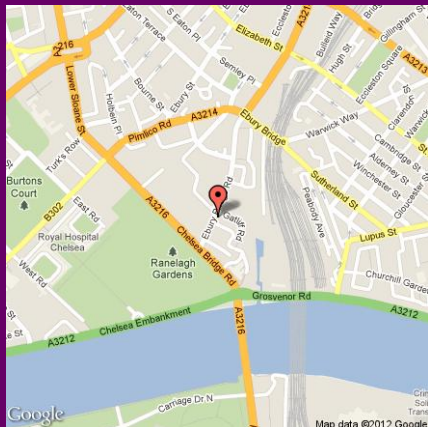


Score	Energy rating	Current	Potential
92+	A		
81-91	B		
69-80	C	74 c	77 c
55-68	D		
39-54	E		
21-38	F		
1-20	G		

EBURY BRIDGE ROAD, UK, SW1W

£1,600 PER MONTH
FURNISHED

The property benefits from being a well proportioned studio flat with ample space for clearly defined living, dining and bedroom areas. The kitchen is open plan and incorporates a breakfast bar. The property further benefits from a modern shower room and plenty of storage throughout.

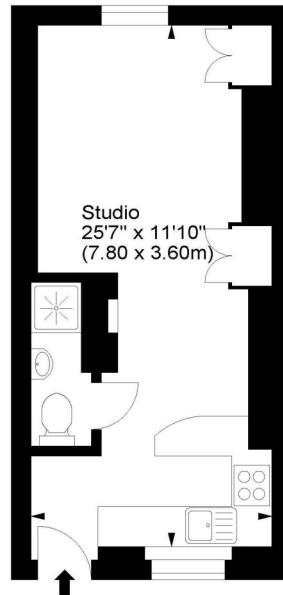


winkworth wishes to inform prospective buyers and tenants that these particulars are a guide and act as information only. All our details are given in good faith and believed to be correct at the time of printing but they don't form part of an offer or contract. No winkworth employee has authority to make or give any representation or warranty in relation to this property. All fixtures and fittings, whether fitted or not are deemed removable by the vendor unless stated otherwise and room sizes are measured between internal wall surfaces - including fire-chimneys.

Gatliff Close, SW1



Approx. Gross Internal Area
306 Sq Ft - 28.43 Sq M



Lower Ground Floor

For illustration purposes only. Not to scale.
All measurements are taken and shown at floor level.
www.r3photography.co.uk © Photography / Floor Plans / Lease Plans / EPCs



Pimlico & Westminster | 020 7828 1786 |
pimlico@winkworth.co.uk

winkworth.co.uk/pimlico



for every step...