



## LANSDOWNE ROAD, W11

**£725.08 PER WEEK (£3,142.00 PCM) Unfurnished**

**AN IMMACULATE NEWLY REFURBISHED TWO BEDROOM FLAT WITH DIRECT ACCESS TO COMMUNAL GARDENS.**

Long Let, 2 Bedrooms, 1 Reception Room, 1 Bathroom, Flat/Apartment, Upper Floor with Lift, Communal Gardens, Unfurnished, 660 Approx. Sq Ft

**Winkworth**



## DESCRIPTION:

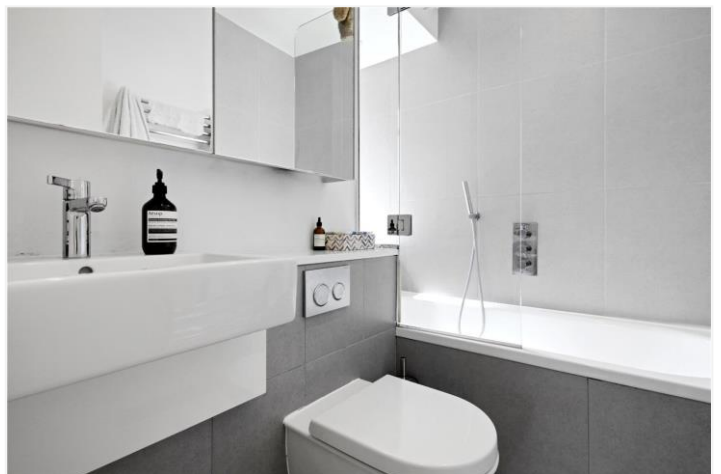
An immaculate and incredibly bright two-bedroom flat on the top floor of this modern building with lift access. The flat benefits from direct access to the stunning communal gardens behind. The property has been recently refurbished throughout and has a fully fitted modern kitchen and bathroom. The flat features under floor heating throughout the living, kitchen hallway and bathroom floors. The flat is offered unfurnished and viewings are highly recommended.

## LOCATION:

Lansdowne Road runs from Holland Park to Ladbroke Grove. This property is located where Lansdowne Road joins Ladbroke Grove, a short walk from the famous Portobello Road and all the local restaurants, shops and bars.

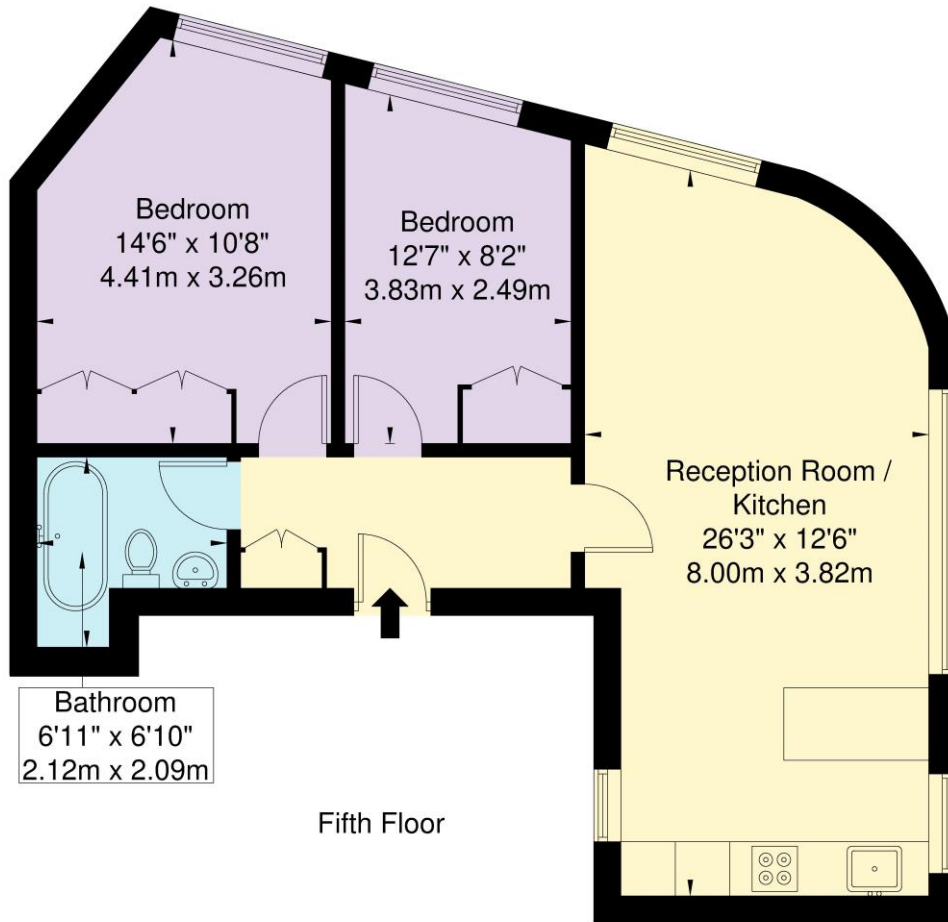
## LOCAL AUTHORITY AND COUNCIL TAX BAND:

Royal Borough of Kensington and Chelsea (Band E)



# Lansdowne Road, W11 2LF

Approx. Gross Internal Area = 61.3 sq m / 660 sq ft



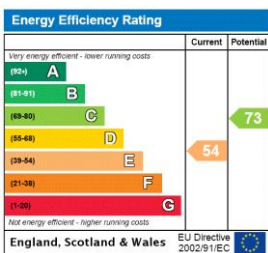
Ref

Copyright **BLEU PLAN**

The Floor plan is not to scale and measurements and areas shown are approximate and therefore should be used for illustrative purposes only. The plan has been prepared in accordance with the RICS code of Measuring Practice and whilst we have confidence in the information produced it must not be relied on. If there is any aspect of particular importance, you should carry out or commission your own inspection of the property.

Copyright @ BLEUPLAN

This floorplan is for illustration purposes only and is not to scale. The position and size of doors, windows, appliances and other features are approximate.



Notting Hill | 0207 727 3227 | nottinghill@winkworth.co.uk



winkworth.co.uk

for every step...

winkworth wishes to inform prospective buyers and tenants that these particulars are a guide and act as information only. All our details are given in good faith and believed to be correct at the time of printing but they don't form part of an offer or contract. No winkworth employee has authority to make or give any representation or warranty in relation to this property. All fixtures and fittings, whether fitted or not are deemed removable by the vendor unless stated otherwise and room sizes are measured between internal wall surfaces, including furnishings.