



THE LODGE, BATCHELOR STREET, LONDON, N1
£495,000 LEASEHOLD

A FANTASTIC ONE BEDROOM GROUND FLOOR FLAT IN THE HEART OF ANGEL

Islington | 0207 354 2480 | islington@winkworth.co.uk

Winkworth

winkworth.co.uk

See things differently



DESCRIPTION:

Spanning 511sqft across the ground floor of this charming, grade II listed building is this wonderful one-bedroom flat. Featuring high ceilings and large sash windows, the property is flooded with natural light. Accommodation includes a master bedroom, bathroom, and open plan kitchen/reception room which creates the perfect entertaining space. The property further benefits from secure entry system, communal gardens and is offered to the market on a chain free basis.

The Lodge is positioned within a secure development on Batchelor Street, which is perfectly located in the heart of Angel and is just moments from the restaurants, bars and shops on Upper Street as well as being within easy reach of the fashionable Granary Square at Kings Cross. A selection of fantastic transport options are at hand with Angel station on the Northern line a short distance away, whilst an array of bus routes provide effortless access across London. Further underground links can be easily accessed from Kings Cross whilst international links are facilitated from St Pancras.

Winkworth

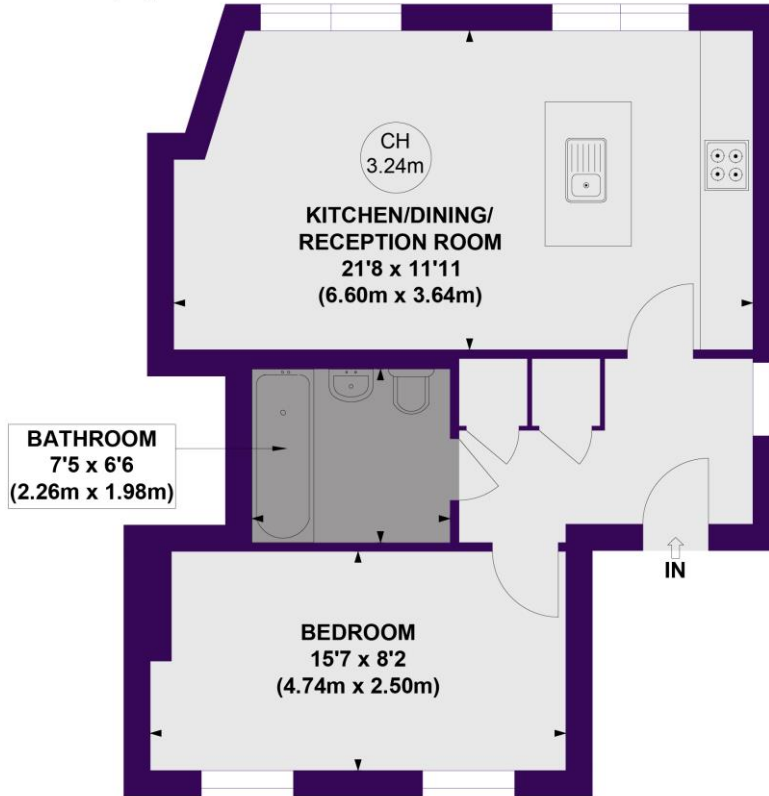


Winkworth

The Lodge, N1

Approx. Gross Internal Floor Area 511 sq. ft / 47.49 sq. m

Key :
CH - Ceiling Height



GROUND FLOOR
GROSS INTERNAL
FLOOR AREA 511 SQ FT

Winkworth

This floorplan is for illustration purposes only and is not to scale. The position and size of doors, windows, appliances and other features are approximate.

Islington | 0207 354 2480 | islington@winkworth.co.uk

Winkworth

winkworth.co.uk

See things differently

Winkworth wishes to inform prospective buyers and tenants that these particulars are a guide and act as information only. All our details are given in good faith and believed to be correct at the time of printing but they don't form part of an offer or contract. No Winkworth employee has authority to make or give any representation or warranty in relation to this property. All fixtures and fittings, whether fitted or not are deemed removable by the vendor unless stated otherwise and room sizes are measured between internal wall surfaces, including furnishings.