



ORDNANCE HILL, LONDON, NW8 £4,615 PER WEEK UNFURNISHED

A unique low built contemporary semi-detached home (4,294 sq. ft./398.9 sq. m.) located on the favoured east side of St John's Wood. The property has recently undergone a major refurbishment programme creating what is arguably one of the finest houses of its kind to come to market in St John's Wood in recent years. The house features well planned accommodation including an impressive kitchen breakfast room overlooking and leading onto a 63ft secluded rear garden, cinema/media room and children's play room. Further benefits include staff accommodation and secure off street parking behind automated gates. Ordnance Hill is ideally situated for all the amenities and transport facilities of St John's Wood including St John's Wood underground station

Principal Bedroom with Dressing Room & En Suite Bathroom | Second Bedroom With En Suite Bathroom | Two Further Bedrooms With Shower Rooms | Double Bedroom | Reception Room/Dining Area | Fully Fitted Kitchen/Breakfast/Family Room | TV Room | Cinema/Media Room | Playroom | Study/Second Dressing Room | Two Guest Cloakrooms | Terrace | Garden | Parking | Studio/Gym | Store Room

Winkworth

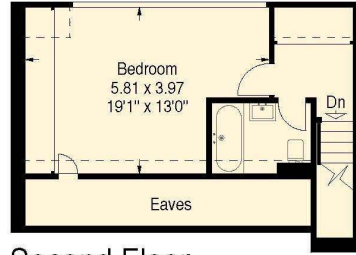
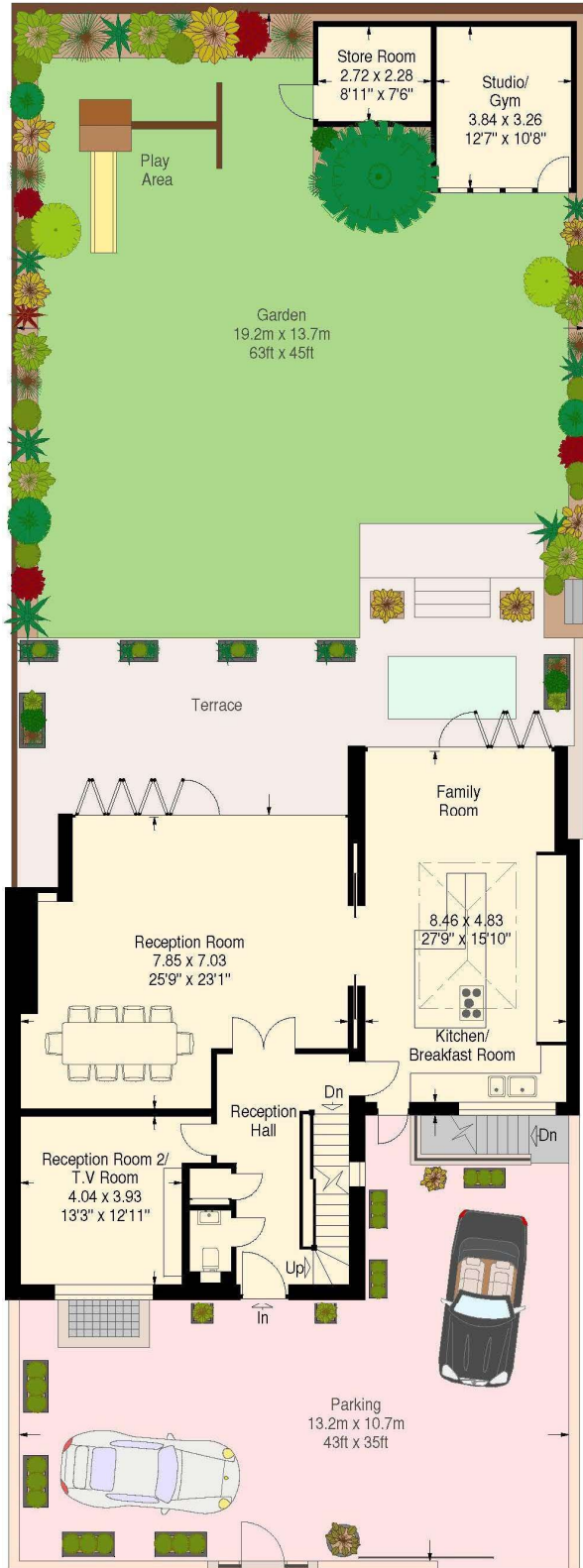
for every step...

winkworth.co.uk/st-johns-wood

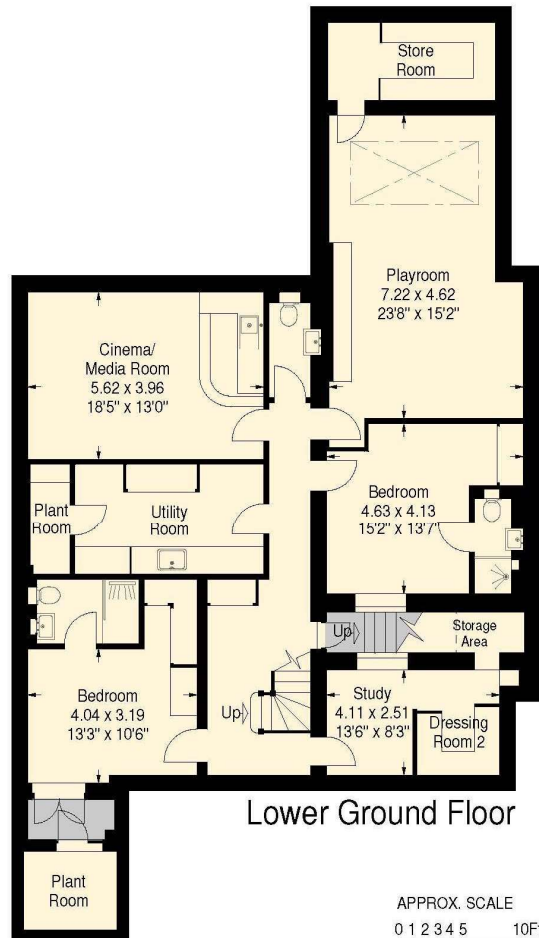


Ordnance Hill, St John's Wood NW8

Approximate Gross Internal Area:
 House - 380.2 sq.mts. / 4092 sq.ft.
 (including plant room and reduced height area,
 below 1.5m - denoted with dashed line)
 Studio/Store Room - 18.7 sq.mts. / 202 sq.ft.
 Total - 398.9 sq.mts. / 4294 sq.ft.



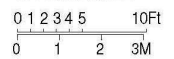
First Floor

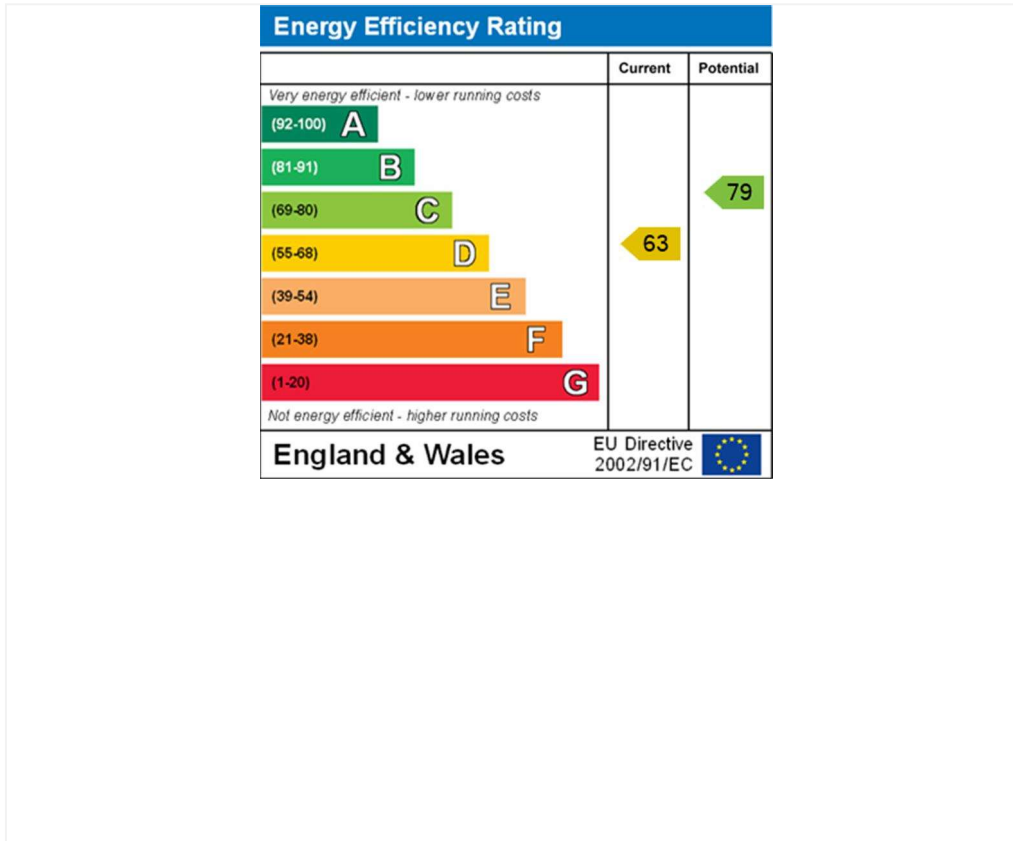


Floor Plans produced by
Proplan
 01491 842925

All measurements and figures are taken
 in accordance with RICS guidelines.
 This plan is for guidance only and must
 not be relied upon as a statement of fact.

APPROX. SCALE





Tenancy Deposit: £27,690.00

Holding Deposit: 1 weeks rent where the rent is up to £100,000 per annum, 2 weeks rent where the rent is over £100,000 per annum

Council Tax Band: H

Where no figures are shown, we have been unable to ascertain the information. All figures that are shown were correct at the time of printing.

Where no figures are shown, we have been unable to ascertain the information. All figures that are shown were correct at the time of printing.

These particulars are not an offer or contract, nor part of one. You should not rely on statements by Winkworth in the particulars or by word of mouth or in writing "information" as being factually accurate about the property, its condition or its value. Winkworth does not have any authority to make any representations about the property, and accordingly any information given is entirely without responsibility on the part of the agents, seller(s) or lessor(s). These particulars are prepared on the basis of the information supplied by our client and are a rough guide for information only. The photographs show only certain parts of the property. We are not able to check all of the information and therefore are unable to guarantee accuracy. All interested parties are therefore advised to undertake all necessary inspections and checks that they deem appropriate. Where displayed, the square footage is taken from the floor plans, which are created by an independent supplier. These measurements are approximate and included for illustrative purposes only. The measurements may vary. Winkworth does not make any representation as to the accuracy of these measurements and you should seek to verify them for yourself. Winkworth accept no liability for any loss you may suffer if you rely on these measurements. All fixtures and fittings, whether fitted or not are deemed removable by the vendor unless stated. Any reference to alterations to, or use of, any part of the property does not mean that any necessary planning, building regulations or other consent has been obtained. Amenities and appliances have not been tested

St John's Wood | 103-104 St. Johns Wood Terrace, London, NW8 6PL | 020 7586 7001 |

Winkworth

for every step...

winkworth.co.uk/st-johns-wood

Winkworth wishes to inform prospective buyers and tenants that these particulars are a guide and act as information only. All our details are given in good faith and believed to be correct at the time of printing but they don't form part of an offer or contract. No Winkworth employee has authority to make or give any representation or warranty in relation to this property. All fixtures and fittings, whether fitted or not are deemed removable by the vendor unless stated otherwise and room sizes are measured between internal wall surfaces, including furnishings.