



LORDSHIP LANE, EAST DULWICH, LONDON, SE22
£450,000 LEASEHOLD

**DISCOVER THIS TWO-BEDROOM FLAT
SITUATED ON THE VIBRANT AND SOUGHT
AFTER LORDSHIP LANE.**

Dulwich | 020 8299 2722 | dulwich@winkworth.co.uk

Tenure Leasehold | Council Tax Band B – London Borough of Southwark | Service
Charge approx. £900 pa | Ground Rent TBC

winkworth.co.uk

Winkworth

See things differently



DESCRIPTION:

Discover this two-bedroom flat situated on the vibrant and sought after Lordship Lane. This delightful property offers a perfect blend of modern living and convenient access to the best of SE22. Boasting an abundance of natural light the property offers two double bedrooms alongside a modern fitted kitchen/living space alongside the family bathroom.

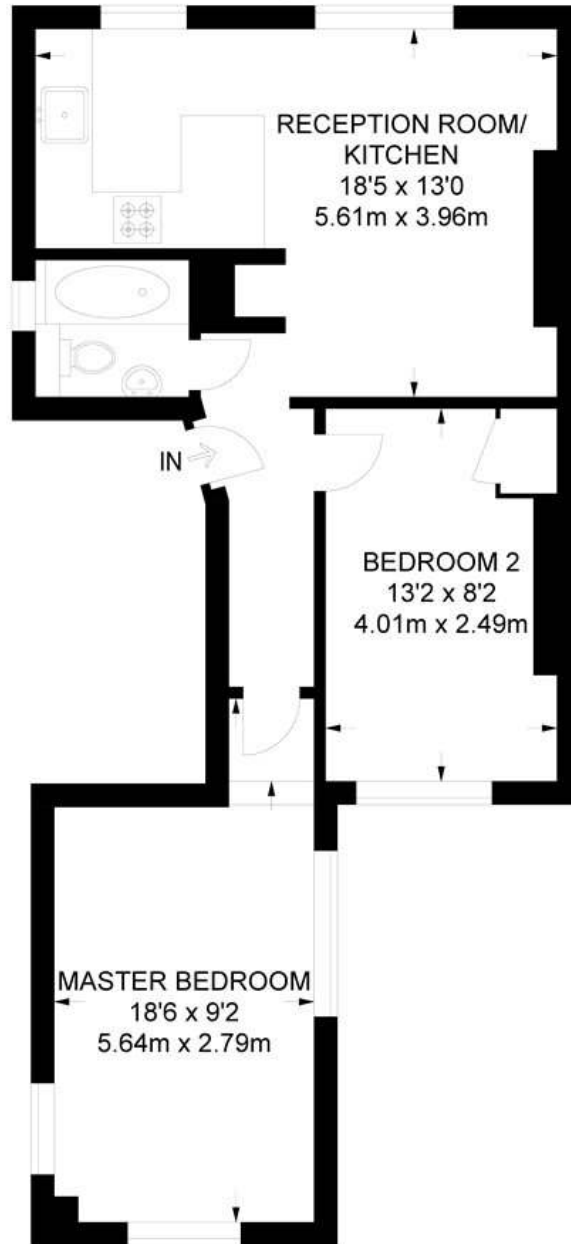
Situated a stone's throw from Dulwich park and Library, this is perfectly located for anyone looking for easy access to an open green space. Easy access to London bridge can be found via East Dulwich station which is a short bus ride. This is a superb flat in a prime location.

AT A GLANCE

- Two Double Bedrooms
- Modern Fitted Kitchen
- Modern Bathroom
- Communal Garden
- Prime Location
- Great Transport Links



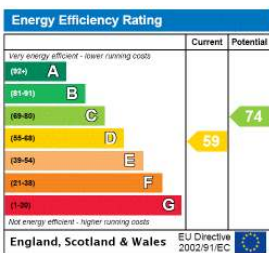




FIRST FLOOR

APPROXIMATE GROSS INTERNAL AREA
536 SQ FT / 49.8 SQ M

This floorplan is for illustration purposes only and is not to scale. The position and size of doors, windows, appliances and other features are approximate.



Dulwich | 020 8299 2722 | dulwich@winkworth.co.uk



winkworth.co.uk

See things differently

Winkworth wishes to inform prospective buyers and tenants that these particulars are a guide and act as information only. All our details are given in good faith and believed to be correct at the time of printing but they don't form part of an offer or contract. No Winkworth employee has authority to make or give any representation or warranty in relation to this property. All fixtures and fittings, whether fitted or not are deemed removable by the vendor unless stated otherwise and room sizes are measured between internal wall surfaces, including furnishings.