

FURNESS ROAD, LONDON, NW10
£749,500 LEASEHOLD

**FOUR BEDROOM, TWO BATHROOM, SPLIT LEVEL FLAT
SPREAD ACROSS 1,466 SQFT LOCATED CLOSE TO
TRANSPORT LINKS AND AMENITIES.**

Kensal Rise & Queens Park | 0208 960 4947 | kensalrise@winkworth.co.uk





LOCATION:

Furness Road is a lovely wide street just to the West of All Souls Avenue in Kensal Green. Transport links at both Kensal Green and Willesden Junction are excellent meaning that you can use the London Overground or Bakerloo Underground. College Road offers an array of independent shops and cafe's which is around 1/4 mile walk from the house. Lovely green spaces for recreation can be found at Roundwood Park or Queen's Park which are all within a reasonable walking distance of the property.



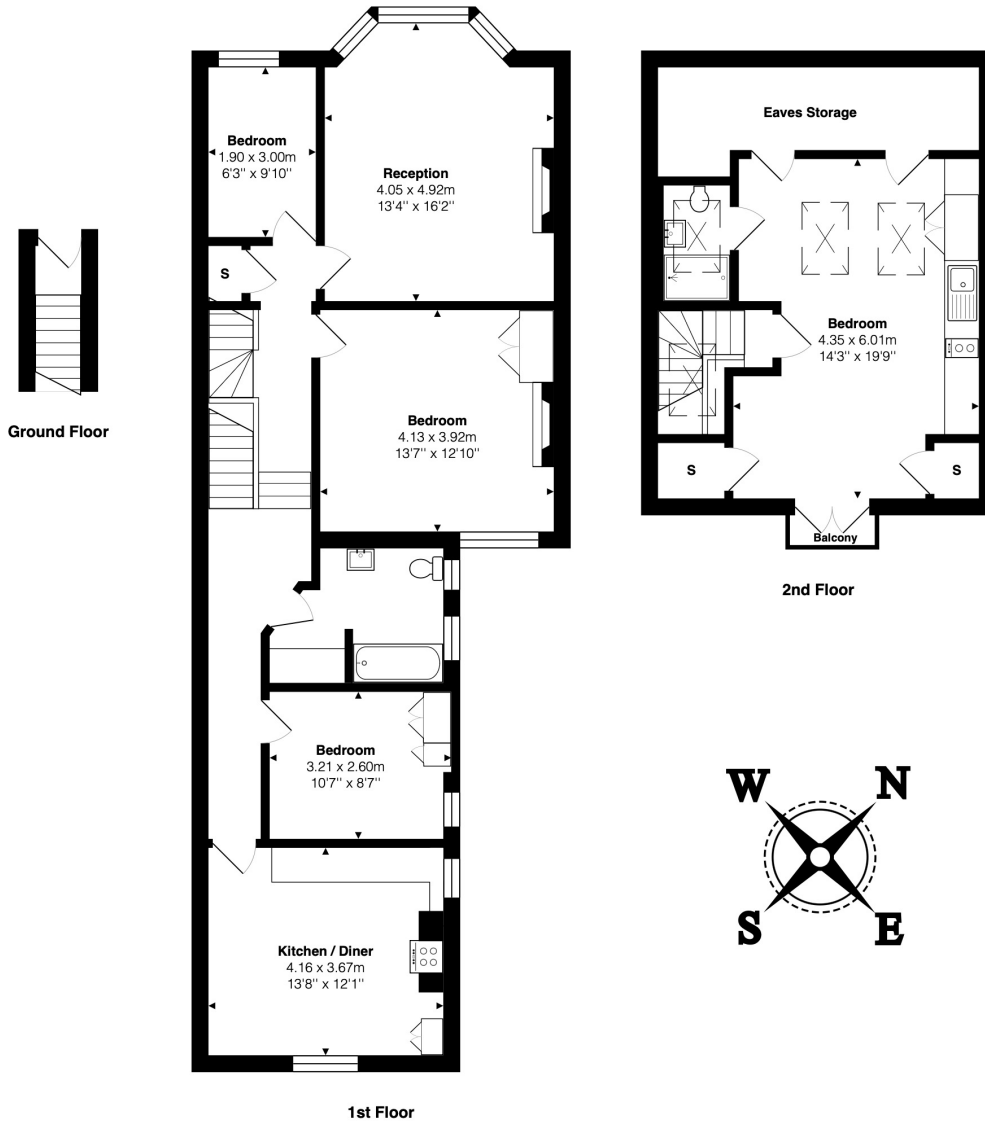
Winkworth



DESCRIPTION:

We are pleased to offer this extended and well-proportioned four bedroom, two bathroom, split level flat retaining many of its period features. The property has a front formal reception room with large sash bay window. To the rear, there is an open plan kitchen diner, which is brand new with high quality appliances. On the first floor are two spacious double bedrooms with additional single bedroom. The loft has been converted and can be used as the principle bedroom with en-suite. Additionally there is a large amount of additional loft storage, which is accessible by a drop down ladder. Viewing comes highly recommended.

Winkworth



Total Area: 136.2 m² ... 1466 ft² (excluding balcony)
 All measurements are approximate and for display purposes only

This floorplan is for illustration purposes only and is not to scale. The position and size of doors, windows, appliances and other features are approximate.

Kensal Rise & Queens Park | 0208 960 4947 | kensalrise@winkworth.co.uk

Winkworth

winkworth.co.uk

See things differently

winkworth wishes to inform prospective buyers and tenants that these particulars are a guide and act as information only. All our details are given in good faith and believed to be correct at the time of printing but they don't form part of an offer or contract. No Winkworth employee has authority to make or give any representation or warranty in relation to this property. All fixtures and fittings, whether fitted or not are deemed removable by the vendor unless stated otherwise and room sizes are measured between internal wall surfaces, including furnishings.