



**11 Fleur-De-Lis, Duttons Road, Romsey, Hampshire, SO51 8LH**

**Winkworth**





## SUPERB APARTMENT IN CENTRAL ROMSEY

This charming ground floor apartment, with its own private outside space, is a short level walk from Romsey town centre. Romsey is an historic market town, providing an excellent range of leisure facilities and a variety of shops for everyday needs. There is also a plethora of independent retailers for that little something different. Local attractions include the historic Abbey, Broadlands House and the famous river Test. Romsey offers a regular street market, which keeps the centre vibrant and busy. The remodelled town centre offers a Piazza, providing lovely outdoor space for sitting back, sipping a coffee and watching the world go by. There is easy access to the M27 and M3 motorways, serving the major centres of Southampton, Winchester and Bournemouth. In addition, there is an excellent local bus service and a train station linking with the mainline services to London at Southampton. The New Forest National Park is within 6 miles of Romsey.

This beautifully presented one bedroom apartment is in this sought after development of Fleur-De-Lis in the heart of Romsey Town Centre. The apartment is one of the few with private outdoor space. The accommodation comprises a large entrance hallway with useful fitted cupboards. The well-proportioned sitting room provides access to the private patio area through French doors. The kitchen is one of the more generous in size on this development and is fitted with a wide range of modern eye and base level units and integral appliances. The bedroom benefits from two sets of built in storage cupboards. The contemporary bathroom features a large walk-in shower.

For those who hanker for some private, low maintenance outside space, this apartment fits the bill. The apartment also comes with a parking space.

- All Mains Utilities
- No Onward Chain
- Superfast Broadband Available





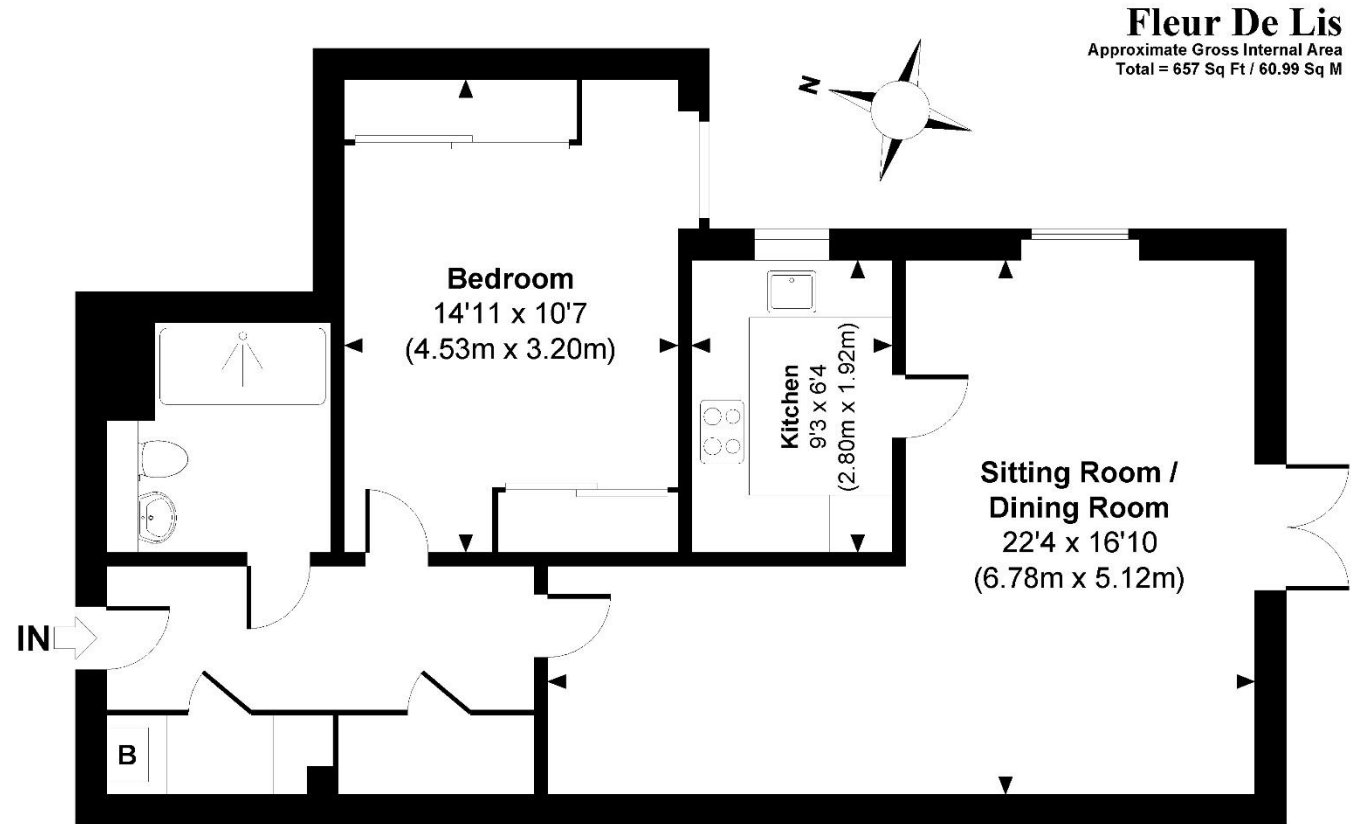
# Winkworth

**Address: 11 Fleur-De-Lis, Duttons Road, Romsey, Hampshire SO51 8LH**

**Council Tax Band: B**  
**EPC: B**

**Tenure: Leasehold**  
**Ground Rent - £525 Per Annum**  
**Service Charge - £1868 – Half Yearly**  
**Lease Length – 117 Years**

**60 Years plus only**



© www.propertyfocus.co | Professional Property Photography & Floorplans  
This plan is for illustrative purposes only and is not to scale. If specified, the Gross Internal Area (GIA), dimensions, North point orientation and the size and placement of features are approximate and should not be relied on as a statement of fact. No guarantee is given for the GIA and no responsibility is taken for any error, omission or misrepresentation.

[winkworth.co.uk/romsey](http://winkworth.co.uk/romsey)

## Winkworth Romsey

18 Market Place, Romsey, Hampshire, SO51 8NA  
01794 511911 | [romsey@winkworth.co.uk](mailto:romsey@winkworth.co.uk)

[winkworth.co.uk/romsey](http://winkworth.co.uk/romsey)

## Winkworth Winchester

2 Black Swan Buildings, Southgate Street,  
Winchester, Hampshire, SO23 9DT  
01962 866777 | [winchester@winkworth.co.uk](mailto:winchester@winkworth.co.uk)

## Winkworth Mayfair & Country House Department

11 Berkeley Street, Mayfair, London, W1J 8DS  
020 7871 0589 | [countryhouse@winkworth.co.uk](mailto:countryhouse@winkworth.co.uk)

# Winkworth

See things differently