



NEWICK ROAD, LONDON, E5  
**£350,000 LEASEHOLD**

## A WELL MAINTAINED ONE BEDROOM PERIOD CONVERSION WITH A PRIVATE COURTYARD JUST A SHORT WALK TO HACKNEY DOWNS

Hackney | 020 8986 4216 | [hackney@winkworth.co.uk](mailto:hackney@winkworth.co.uk)

**Winkworth**





## DESCRIPTION:

In the heart of the vibrant E5 postcode, this excellent one-bedroom lower ground floor period maisonette presents an exceptional opportunity for comfortable and contemporary living. Boasting approximately 492 sq ft of thoughtfully designed space, this residence is a great space for a first-time buyer. As you step inside, you're greeted by a spacious living room bathed in natural light, courtesy of a generously sized bay window. The room's ambiance is further enhanced by a captivating feature fireplace, creating a cozy atmosphere for relaxation and entertaining. An open-plan layout seamlessly connects the living area to a modern kitchen. A three-piece bathroom suite is off the hallway, while the well-proportioned bedroom provides ample room for wardrobes and additional furnishings. What truly sets this maisonette apart is its direct access to a private courtyard, perfect for savouring morning coffee.

Nestled in the sought-after E5 locale, Newick Road is ideally situated to take advantage of all that this vibrant and diverse neighbourhood has to offer. With an array of local amenities within easy reach and an eclectic mix of restaurants, cafes, and eateries just a stone's throw away. Explore the diverse tastes of the neighbourhood, from artisanal coffee shops to international cuisine. Transport links are excellent, with frequent bus services and Hackney Downs and Clapton Overground stations nearby, providing swift connections to Central London and beyond. Whether you need to commute or explore the city, you'll have convenient options at your doorstep.

**Winkworth**



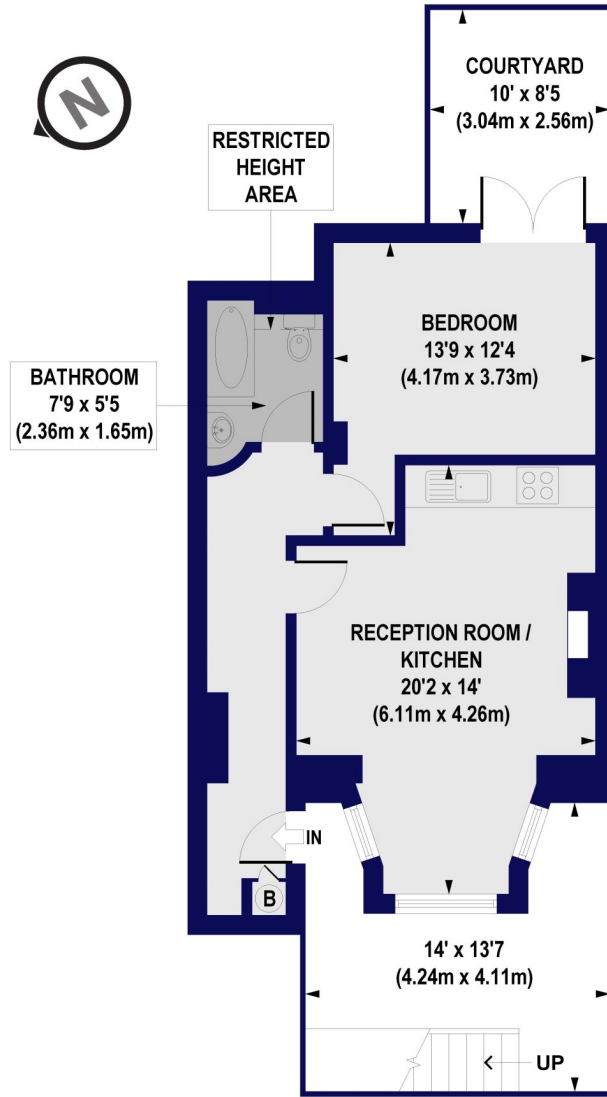


Winkworth

## Newick Road, E5

Approx. Gross Internal Floor Area 492 sq. ft / 45.73 sq. m (Including Restricted Height Area)

Approx. Gross Internal Floor Area 487 sq. ft / 45.26 sq. m (Excluding Restricted Height Area)

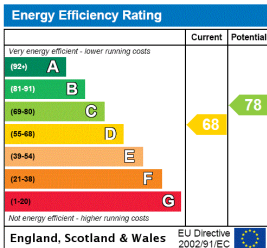


LOWER GROUND FLOOR

All measurements of walls, doors, windows, fittings and appliances, including their size and location, are shown as standard sizes and do not constitute any warranty or representation by the seller, their agent or CP Creative. Any intending purchaser must satisfy himself by inspection or otherwise as to the correctness of the information contained in these plans. This plan is for illustrative purposes only and should be used as such by any prospective purchasers.

**Winkworth**

This floorplan is for illustration purposes only and is not to scale. The position and size of doors, windows, appliances and other features are approximate.



Hackney | 020 8986 4216 | [hackney@winkworth.co.uk](mailto:hackney@winkworth.co.uk)

**Winkworth**

[winkworth.co.uk](http://winkworth.co.uk)

See things differently

Winkworth wishes to inform prospective buyers and tenants that these particulars are a guide and act as information only. All our details are given in good faith and believed to be correct at the time of printing but they don't form part of an offer or contract. No Winkworth employee has authority to make or give any representation or warranty in relation to this property. All fixtures and fittings, whether fitted or not are deemed removable by the vendor unless stated otherwise and room sizes are measured between internal wall surfaces, including furnishings.