



SHEFFIELD TERRACE, W8
£1,500,000 LEASEHOLD

A BEAUTIFULLY PRESENTED TWO BEDROOM FLAT SITUATED ON THE THIRD FLOOR (WITH LIFTS) OF AN EXTREMELY SOUGHT AFTER AND CHARMING MANSION BLOCK WITH PORTERAGE AND WITH DIRECT ACCESS TO EXTENSIVE COMMUNAL GARDENS.

Kensington | 020 7727 1500 | kensington@winkworth.co.uk
118 Kensington Church Street, Kensington, London, W8 4BH

Winkworth

for every step...

winkworth.co.uk



DESCRIPTION:

A beautifully presented two bedroom flat situated on the third floor (with lifts) of an extremely sought after and charming mansion block with portage and with direct access to extensive communal gardens. The apartment has a generous reception room with two sash windows and door through to a modern and well-equipped kitchen. The two bedrooms are served by a luxurious shower room.

Campden House is located on Sheffield Terrace which is a quiet and attractive street off Kensington Church Street and which is close to both Kensington High Street and Notting Hill Gate with their many excellent shops, restaurants and transport facilities. The green open spaces of Kensington Gardens and Holland Park are also within easy walking distance.

ACCOMMODATION:

Entrance Hall | Reception Room | Kitchen | Two Bedrooms | Shower Room | Portage | Lifts | Communal Gardens

LOCAL AUTHORITY:

The Royal Borough of Kensington & Chelsea

NEAREST PUBLIC TRANSPORT:

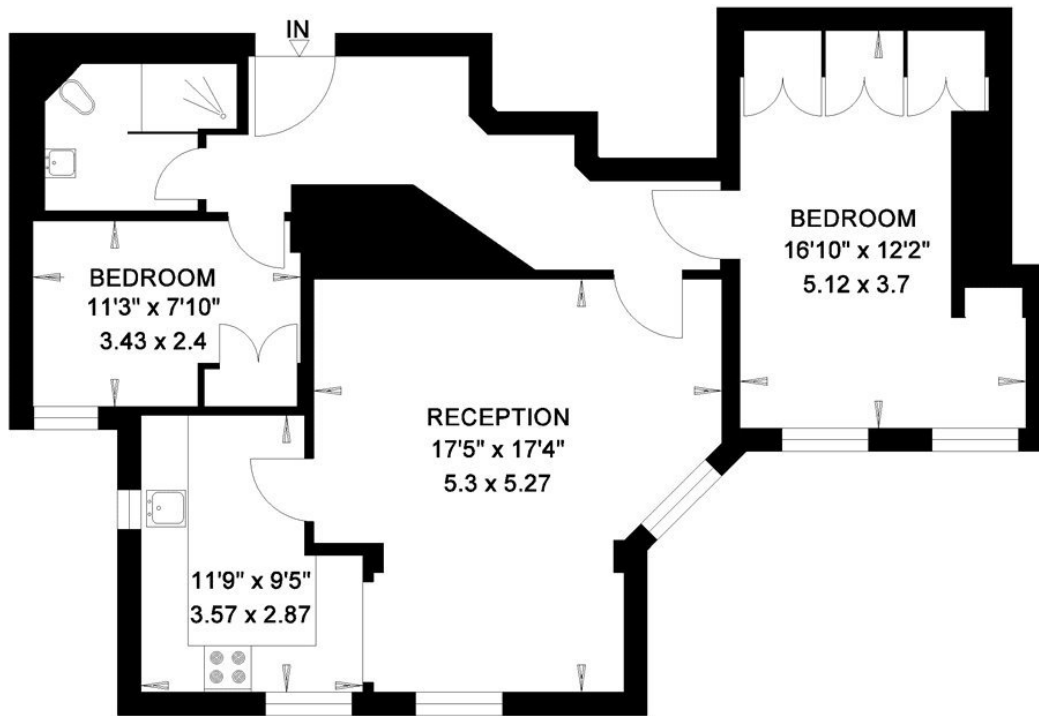
Notting Hill Gate
High Street Kensington





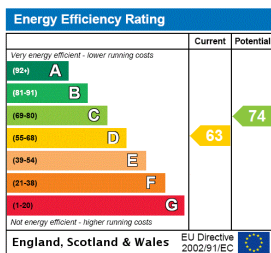
CAMPDEN HOUSE
LONDON W8

Gross Internal Area = 78 sq. metres
848 sq. feet



THIRD FLOOR

This floorplan is for illustration purposes only and is not to scale. The position and size of doors, windows, appliances and other features are approximate.



Lease: 142 years remaining
Ground Rent: TBC
Service Charge: TBC
Council tax band: TBC

Please note all figures are approximate

