



MARRYAT HOUSE, LONDON, SW1V

£585,000

LEASEHOLD

At a glance...

- Three Bedrooms
- Own Front Door
- Split-Level Accommodation
- Communal Gardens
- Great SW1 Location
- Council Tax Band: D

Winkworth

for every step...



Energy Efficiency Rating		
	Current	Potential
Very energy efficient - lower running costs (92+)		
A		
(81-91)		
B		
(69-80)		
C		
(55-68)		
D	60	63
(39-54)		
E		
(21-38)		
F		
(1-20)		
G		
Not energy efficient - higher running costs		
England, Scotland & Wales	EU Directive 2002/91/EC	

MARRYAT HOUSE, LONDON, SW1V

£585,000

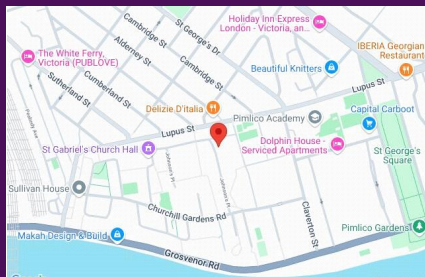
LEASEHOLD

This large and bright maisonette offers some 882 sq ft over the ground and 1st floor levels.

Situated just off Lupus Street and within a short walk of Pimlico underground station the flat requires a small amount of cosmetic enhancement but is very liveable and has had recent refurbishment works already carried out.

Offering a large reception room with access to the communal gardens, great sized modern kitchen and large hallway on the ground floor plus three good bedrooms, family bathroom and an extra cloakroom on the 1st floor the property would make a lovely home with more than enough space for most.

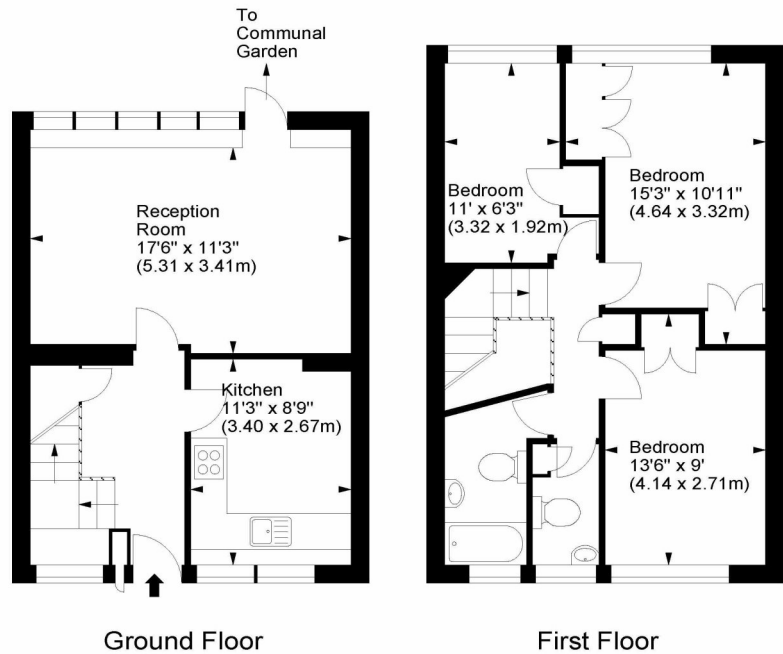
Accessed via its own front door and being part of a low-rise block with greenery to the front and rear, this is a great opportunity to acquire a fantastic size property in the most central of locations.



winkworth wishes to inform prospective buyers and tenants that these particulars are a guide and act as information only. All our details are given in good faith and believed to be correct at the time of printing but they don't form part of an offer or contract. No Winkworth employee has authority to make or give any representation or warranty in relation to this property. All fixtures and fittings, whether fitted or not are deemed removable by the vendor unless stated otherwise and room sizes are measured between internal wall surfaces - including fire doors.

Marryat House, SW1

Approx. Gross Internal Area
882 Sq Ft - 81.94 Sq M



For illustration purposes only. Not to scale.
All measurements are taken and shown at floor level.
www.r3photography.co.uk © Photography / Floor Plans / Lease Plans / EPCs



Pimlico & Westminster

020 7828 1786

pimlico@winkworth.co.uk

winkworth.co.uk/pimlico-westminster

Winkworth

for every step...