



**FLAT 7, BROMPTON SQUARE, LONDON, SW3**  
**£2,495 PER MONTH FURNISHED**

**A WELL-PRESENTED AND FURNISHED ONE BEDROOM APARTMENT ON THE TOP FLOOR (LIFT) OF A CONVERTED BUILDING IN THE HEART OF KNIGHTSBRIDGE ON BROMPTON SQUARE.**

**DESCRIPTION:**

The property is mainly carpeted and comprises of an open plan reception room, a double bedroom and a bathroom with separate Toilette. Brompton Square is greatly located five minutes' walk from South Kensington Station and five minutes' walk from Harrods and Knightsbridge tube station.

**AT A GLANCE**

- One bedroom
- Open plan kitchen
- Furnished
- Top floor
- lift

**Knightsbridge & Chelsea | 0207 589 6616 | [knightsbridge@winkworth.co.uk](mailto:knightsbridge@winkworth.co.uk)**

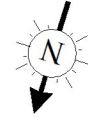




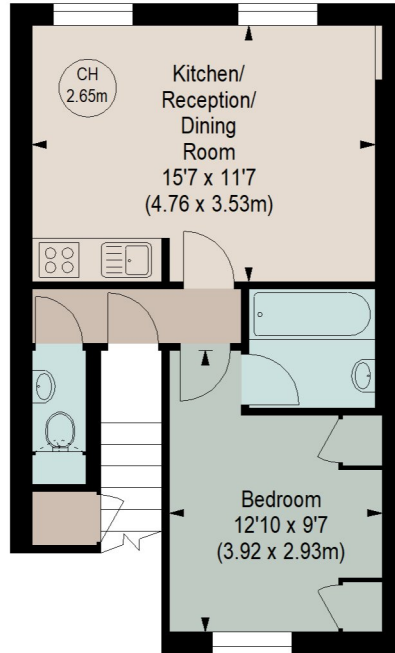
# BROMPTON SQUARE, SW3

Approximate gross internal area

376 sq ft / 34.93 sq m



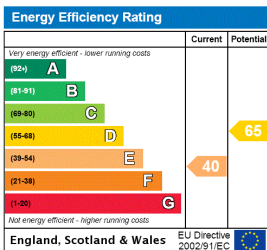
Key :  
CH - Ceiling Height



## FIFTH FLOOR

Although every attempt has been made to ensure accuracy, all measurements are approximate.  
This floorplan is for illustrative purposes only and not to scale.  
Measured in accordance with RICS standards.

This floorplan is for illustration purposes only and is not to scale. The position and size of doors, windows, appliances and other features are approximate.



**Deposit: £2875.00**

**Holding Deposit: £575**

**Council Tax Band: E**

Where no figures are shown, we have been unable to ascertain the information. All figures that are shown were correct at the time of printing.