



Fairway Point, 93 Golf Links Road

Ferndown BH22 8BU

OFFERS IN EXCESS OF £375,000





**OFFERS IN EXCESS OF £375,000
FREEHOLD**

**Stunning two double bedroom
two bathroom penthouse apartment
(second floor with lift) located in a
luxury development of just eight
apartments overlooking Ferndown
Championship Golf Course.**

**This lovely apartment has a share of the
freehold and has been built to a very high
specification throughout, with a modern
and luxury finish.**

**Further benefitting from an external
storage unit, landscaped communal
gardens, allocated parking and
NO ONWARD CHAIN.**

Two Double Bedrooms
Stunning Penthouse Apartment
Master En-suite
Luxury Specification Throughout
Allocated Off Road Parking
External Storage Unit
Lift Access
Sought After Location With Views Over Golf
Course
Share Of Freehold
£2500PA Service Charge (Paid Twice Yearly)
Communal Landscaped Garden
No Onward Chain

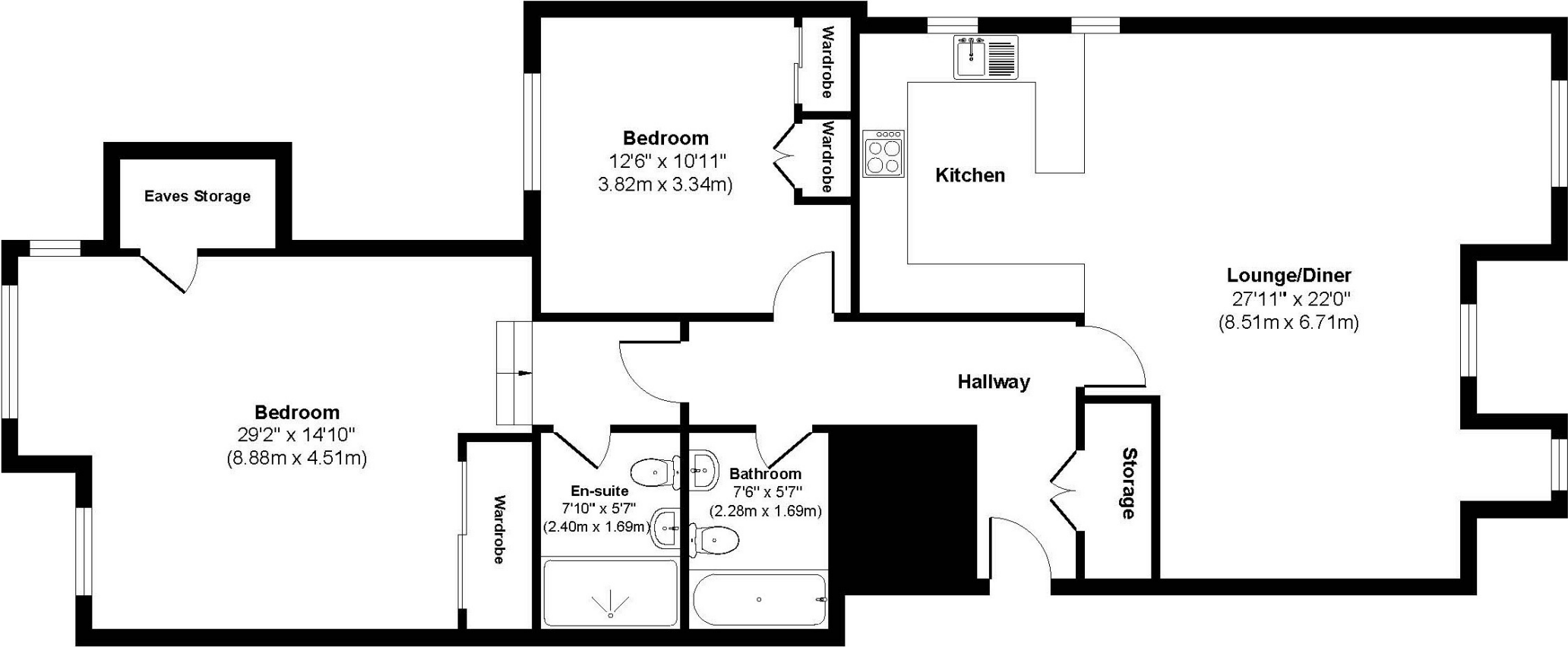
EPC B | Council Tax Band E

01202 434365

ferndown@winkworth.co.uk



Fairway Point



Approx. Gross Internal Floor Area 1129 sq. ft / 105 sq. m
Illustration for identification purposes only, measurements approximate and not to scale.



LOCATION

Fairway Point is positioned on Golf Links Road, a very desirable residential location just a short walk from Ferndown town centre, which has a range of shops, cafes and amenities including an M&S Food Hall. There are bus routes within a short walk giving you easy access to Bournemouth, Poole and Wimborne, all of which have an excellent range of shops, bars, restaurants and leisure facilities. Award winning beaches are just twenty minutes away and the A31 provides quick access to the New Forest, Southampton and beyond for the commuter by car.

Winkworth Ferndown

406 Ringwood Road, Ferndown, Dorset, BH22 9AU

01202 434365 | ferndown@winkworth.co.uk

winkworth.co.uk/ferndown

Winkworth